

Dampers

DAMPERS
SILENTBLOKY
АМОРТИЗАТОРЫ



 **Rubena**

Always Innovation

TRADITION / QUALITY / RELIABILITY TRADICE / KVALITA / SPOLEHLIVOST ТРАДИЦИЯ / КАЧЕСТВО / НАДЕЖНОСТЬ

TRADITION / QUALITY / RELIABILITY

Leading European rubber manufacturer with nearly 100-year tradition. Reliability and top quality of our products conform to international standards certified by RW TÜV Essen.

TRADICE / KVALITA / SPOLEHLIVOST

Přední evropský výrobce gumárenské produkce s téměř 100letou tradicí. Spolehlivost a vysoká kvalita vyráběné produkce odpovídá mezinárodním standardům certifikovaným společností RW TÜV Essen.

ТРАДИЦИЯ / КАЧЕСТВО / НАДЕЖНОСТЬ

Известный европейский производитель резиновых изделий с почти 100-летней традицией. Надежность и высокое качество выпускаемой продукции соответствует международным стандартам, сертифицированным обществом RW TÜV Essen.



EN ISO 9001:2000 / ISO/TS 16949:2002 / EN ISO 14001
 Certificates No. 04100 19940767,
 04111 19940767/01, 04111 19940767/02



CONTENTS / OBSAH / СОДЕРЖАНИЕ

GENERAL INFORMATION	5
Introduction / Logistics / New product / Vibration dampers	
Applied materials / Dimensional tolerances / Packaging / Storage	
Contacts list / Order example	
VŠEOBECNÉ INFORMACE	7
Úvod / Logistika / Nový výrobek / Silentbloky (Pružiny)	
Použité pryže / Rozměrové tolerance / Balení / Skladování	
Kontaktní adresa / Příklad objednávky	
ОБЩАЯ ИНФОРМАЦИЯ	9
Введение / Логистика / Новое изделие / Амортизаторы	
Использованные резины / Размерные допуски / Упаковка / Хранение	
Список контактов / Пример заявки	
STANDARD VIBRATION DAMPERS	11
Type 1, Type 2, Type 3, Type 4, Type 5	
Load characteristics	39
VÁLCOVÉ PRUŽINY STANDARDNÍ	11
Typ 1, Typ 2, Typ 3, Typ 4, Typ 5	
Zatěžovací charakteristiky	39
ЦИЛИНДРИЧЕСКИЕ АМОТИЗАТОРЫ - СТАНДАРТНЫЕ	11
Тип 1, Тип 2, Тип 3, Тип 4, Тип 5	
Нагрузочные характеристики	39
CYLINDRICAL VIBRATION DAMPERS NONSTANDARD – FULL	43
Type TP1, TP2, TP3, Type SP, Type KR	
VÁLCOVÉ PRUŽINY NESTANDARDNÍ - PLNÉ	43
Typ TP1, TP2, TP3, Typ SP, Typ KR	
ЦИЛИНДРИЧЕСКИЕ АМОТИЗАТОРЫ - НЕСТАНДАРТНЫЕ – МАССИВНЫЕ	43
Тип TP1, TP2, TP3, Тип SP, Тип KR	
CYLINDRICAL VIBRATION DAMPERS NONSTANDARD – PERFORMATED	44
Type GH, Type IS, Type RB, Type GK, Type GP	
VÁLCOVÉ PRUŽINY NESTANDARDNÍ - PRŮCHOZÍ	44
Typ GH, Typ IS, Typ RB, Typ GK, Typ GP	
ЦИЛИНДРИЧЕСКИЕ АМОТИЗАТОРЫ - НЕСТАНДАРТНЫЕ - СКВОЗНЫЕ	44
Тип GH, Тип IS, Тип RB, Тип GK, Тип G	
CYLINDRICAL VIBRATION DAMPERS NONSTANDARD - DISC	46
VÁLCOVÉ PRUŽINY NESTANDARDNÍ - KOTOUČOVÉ	46
ЦИЛИНДРИЧЕСКИЕ АМОТИЗАТОРЫ - НЕСТАНДАРТНЫЕ - ДИСКОВЫЕ	46
STOP DAMPERS – CIRCULAR	47
Type KK, Type KP-D, KP-E, Type .16, Type DS, Type KD, Type KE, Type KH, Type KG	
NÁRAZNÍKOVÉ PRUŽINY - KRUHOVÉ	47
Typ KK, Typ KP-D, KP-E, Typ .16, Typ DS, Typ KD, Typ KE, Typ KH, Typ KG	
БУФЕРЫ – КОНИЧЕСКИЕ	47
Тип KK, Тип KP-D, KP-E, Тип .16, Тип DS, Тип KD, Тип KE, Тип KH, Тип KG	

STOP DAMPERS – PRISMATIC	48
Type TAB, Type RP – 0G, Type 01, Type KD	
NÁRAZNÍKOVÉ PRUŽINY - HRANOLOVÉ	48
Typ TAB, Typ RP - 0G, Typ .01, Typ KD	
БУФЕРЫ – ПРИЗМАТИЧЕСКИЕ	48
Тип TAB, Тип RP – 0G, Тип 01, Тип KD	
STOP DAMPERS – GP	49
Type GP – QP, Type GP – 1G, Type GP – 2G, Type GP – 1I	
NÁRAZNÍKOVÉ PRUŽINY - GP	49
Typ GP – QP, Typ GP – 1G, Typ GP – 2G, Typ GP – 1I	
БУФЕРЫ – GP	49
Тип GP – QP, Тип GP – 1G, Тип GP – 2G, Тип GP – 1I	
COVER DAMPERS	50
POUZDROVÉ PRUŽINY	50
ВТУЛОЧНЫЕ АМОРТИЗАТОРЫ	50

GENERAL INFORMATION

INTRODUCTION

RUBENA Inc. Hradec Králové belongs with its 90 years tradition to the oldest rubber works in Bohemia. The main productive activity comprises rubber and rubber-bonded metal parts. The company supplies its products into the automotive industry, mechanical engineering, building industry, electronics, defence of the State and sanitary engineering. You can meet our products in motor vehicles Škoda – VW, BMW, Peugeot, Renault, SEAT, Volvo, DAF, Tatra, LIAZ and in variety of other brands. Rubber parts with the company logo of RUBENA are present in assemblies, produced by Bosch, Siemens, Moulinex, Hella and ETA. You may find them in further final products, produced by many well-known companies.

LOGISTICS

Modern systems of production management and planning represent for RUBENA Inc. important tools in order to provide deliveries of quality products in time.

Our target is to always deliver the right quantity and qualities in the right time, according as require the plans of our customers.

By consistent monitoring each of our production processes we secure attainment of our objectives.

The manufacturing tradition, many years of development experience, competent co-operator team, adequate manufacturing equipment and a well-established system of production process quality management guarantee a “tailor-made” implementation of our customers requirements.

Our advantages are:

- product quality
- competitive prices
- short terms of delivery
- pre-sale servicing
- competent consultation
- deliveries up to the customer

NEW PRODUCT

When considering a new product we are prepared to offer you:

- cooperation for optimal solving of product shape,
- selection of most suitable material with respect to product end-use properties,
- development of a new compound according to a specific submission,
- elaboration of mould drawing documentation for the product using CAD/CAM systems,
- sample mould fabrication and delivery of sample mouldings,
- mould fabrication for rubber parts even of very complicated shapes.

VIBRATION DAMPERS

To the range of rubber and rubber-bonded metal parts belongs the commodity of VIBRATION DAMPERS.

RUBENA Inc. has been producing rubber-metal antivibration parts – dampers in the plant in Hradec Králové for more than 50 years. They are intended for elastic mounting, shock damping, active and passive insulation of vibrations, noise absorbing, transfer of forces, protective mounting etc. High technology level and high variety of materials allows the production of high quality antivibration parts with required properties.

Modern technologies are applied for the production itself both in the area of metal parts preparation and in the area of moulding. To the basic materials, applied for the production, belong rubber grades based on NR and SBR. The product and process control are highly accentuated.

Our aim is to ensure trouble-free functionality and durability of manufactured parts and thereby a long-lasting satisfaction of our partners as well.

APPLIED MATERIALS

The vibration dampers are manufactured from elastomers based on NR, SBR and NBR with the standard hardness of 55 ShA, unless otherwise specified. For custom-made products it is possible to use materials within the range from 30 ShA to 85 ShA.

DIMENSIONAL TOLERANCES

Standard types are delivered with tolerance according to DIN 7715, part 2, Class M4 – see table below.

Dimension		Tolerance	F ±	C ±
	to 6,3	mm	0,5	0,5
from 6.3	to 10	mm	0,7	0,7
from 10	to 16	mm	0,8	0,8
from 16	to 25	mm	1,0	1,0
from 25	to 40	mm	1,3	1,3
from 40	to 63	mm	1,6	1,6
from 63	to 100	mm	2,0	2,0
from 100	to 160	mm	2,5	2,5
from 160		%	1,5	1,5

PACKAGING

The vibration dampers are dispatched in paper or PE bags, cardboard boxes or pallets. Only dampers of the same type and dimension are packed into one packing.

STORAGE

When the storage conditions according to ČSN 63 0001 are kept, the dampers may be stored for 7 years.

COMMERCIAL CONTACT - WHOLESALE WAREHOUSE

RUBENA a.s.
Servisní sklad
Ceských bratři 338
547 36 Nachod
Czech Republic

Tel.: +420 491 447 558 – 9
Tel.: +420 91 447 565 – 7
Tel.: +420 491 447 406
Tel.: +420 491 447 410
Fax: +420 491 447 569
E-mail: sklad@rubena.cgs.cz
E-shop: www.rubena.cz

ORDER EXAMPLE

Cylindrical vibration damper, Type 2, 10/8 – M3x10 and number of pieces.

Cylindrical vibration damper, Type 1, 10/10 – M4x10/M4x5 and number of pieces.

Stop damper, Type – KD, 25/17 – M6x18 and number of pieces.

We shall be glad to inform you about the price, minimal ordering quantity and delivery date upon your inquiry.

ÚVOD

RUBENA a.s. Hradec Králové patří s devadesátiletou tradicí výroby mezi nejstarší gumárenské podniky v Čechách. Hlavní náplní je výroba pryžových a pryžokovových dílů. Podnik dodává své výrobky pro automobilky, strojírenství, stavebnictví, elektroniku, obranu státu a zdravotnictví. S našimi výrobky se můžete setkat v automobilech Škoda - VW, BMW, Peugeot, Renault, SEAT, Volvo, DAF, Tatra, LIAZ a v řadě dalších značek. Pryžové díly s výrobním logem Rubena jsou i v kompletech firem Bosch, Siemens, Moulinex, Hella a ETA. Objevíte je i v řadě dalších finálních výrobků mnoha známých firem.

LOGISTIKA

Moderní systémy řízení výroby a plánování jsou pro Rubenu, a.s. důležité nástroje, aby mohla zajišťovat dodávky kvalitních výrobků včas.

Naším cílem je vždy dodávat správné množství a kvalitu ve správné době, jak vyžadují plány našich zákazníků.

Trvalým monitorováním každého z našich výrobních procesů zajišťujeme dosažení našeho cíle.

Tradice výroby, dlouholeté zkušenosti z vývoje, kvalifikovaný tým spolupracovníků, odpovídající výrobní zařízení a zavedený systém řízení kvality výrobního procesu zaručují splnění požadavků každého zákazníka "na míru".

Naše přednosti jsou:

- kvalita výrobku,
- konkurenceschopné ceny,
- krátké dodací termíny,
- předprodejní servis,
- odborné konzultace,
- dodávky až k zákazníkovi.

NOVÝ VÝROBEK

Při zadávání požadavků na nový výrobek jsme připraveni vám nabídnout:

- spolupráci při optimálním řešení tvaru výrobku,
- výběr nejvhodnějšího materiálu s ohledem na užitné vlastnosti výrobku,
- vývoj nové směsi podle specifického zadání,
- zpracování výkresové dokumentace formy na výrobek s použitím systémů CAD/CAM,
- vyrobení vzorkové formy a předání zkušebních vylisků,
- zhotovení forem na pryžové dílce i velmi komplikovaných tvarů.

SILENTBLOKY (PRUŽINY)

Součástí výroby pryžových a pryžokovových dílů je i komodita SILENTBLOKY.

Rubena a.s. vyrábí v provozu v Hradci Králové pryžokovové antivibrační prvky – silentbloky již více než 50 let. Jsou určeny k pružnému uložení, tlumení nárazů, aktivní i pasivní izolaci kmitů, hlukové izolaci, přenosu sil, ochrannému uložení a podobně. Vysoká úroveň technologie a široký sortiment používaných pryží umožňuje výrobu velmi kvalitních antivibračních dílů s požadovanými vlastnostmi.

Pro vlastní výrobu jsou aplikovány moderní technologie jak v oblasti přípravy kovových zálisků, tak v oblasti lisování. K základním materiálům používaným pro výrobu patří pryže na bázi NR a SBR. Velký důraz je kladen na kontrolu výrobků i výrobního procesu.

Naším cílem je zajistit bezproblémovou funkčnost a životnost námi vyráběných dílů a tím i dlouhodobou spokojenost našich partnerů.

POUŽITÉ PRYŽE

Silentbloky jsou vyráběny z pryží na bázi NR, SBR a NBR v standardní tvrdosti 55 ShA, pokud není uvedeno jinak. Na zakázku lze použít pryže v rozmezí od 30 do 85 ShA.

ROZMĚROVÉ TOLERANCE

U standardního provedení se silentbloky dodávají s tolerancí dle DIN 7715 díl 2, Třída M4 - viz. tabulka.

Rozměr		Tolerance	F ±	C ±
	do 6,3	mm	0,5	0,5
od 6,3	do 10	mm	0,7	0,7
od 10	do 16	mm	0,8	0,8
od 16	do 25	mm	1,0	1,0
od 25	do 40	mm	1,3	1,3
od 40	do 63	mm	1,6	1,6
od 63	do 100	mm	2,0	2,0
od 100	do 160	mm	2,5	2,5
od 160		%	1,5	1,5

BALENÍ

Silentbloky se expedují v papírových nebo PE sáčcích, kartónových krabicích nebo paletách. Do jednoho obalu se balí silentbloky jen jednoho druhu a rozměru.

SKLADOVÁNÍ

Při dodržení skladovacích podmínek dle ČSN 63 0001, lze skladovat silentbloky 7 let.

OBCHODNÍ SPOJENÍ - SERVISNÍ SKLAD

RUBENA a.s. Hradec Králové
Servisní sklad
Českých bratří 338
547 36 Náchod
Česká republika

tel.: 491 447 558 – 9
tel.: 491 447 565 – 7
tel.: 491 447 406
tel.: 491 447 410
fax: 491 447 569
e-mail: sklad@rubena.cgs.cz
e-shop: www.rubena.cz

PŘÍKLAD OBJEDNÁVKY

Válcová pružina, Typ 2, 10/8 - M3x10 a počet kusů.

Válcová pružina, Typ 1, 10/10 - M4x10/M4x5 a počet kusů.

Nárazníková pružina, Typ - KD, 25/17 - M6x18 a počet kusů.

Cenu, minimální objednávkovou množství a termín dodání vám rádi sdělíme na základě konkrétní poptávky.

ВВЕДЕНИЕ

АО «RUBENA» Градец Кралове принадлежит с ее девятидесятилетней традицией к самым старшим резиновым заводам в Чехии. Основной производственной деятельностью является производство резиновых и резино-металлических изделий. Завод поставляет свои изделия на автозаводы, фирмам из отрасли машиностроения, строительства, электроники, государственной обороны и здравоохранения. Изделия фирмы «RUBENA» применяются в автомобилях Škoda - VW, BMW, Peugeot, Renault, SEAT, Volvo, DAF, Tatra, LIAZ и ряду других марок. Резиновые детали с эмблемой «RUBENA» находятся в комплектах фирм Bosch, Siemens, Moulinex, Hella и ETA и возможно их найти в ряду готовых изделий производства многих знакомых компаний.

ЛОГИСТИКА

Современные системы управления производства и планировки являются для фирмы «RUBENA» немаловажными инструментами, чтобы было возможно обеспечивать доставки качественных изделий вовремя.

Нашей целью является всегда поставлять правильное количество и качество в правильное время, как требуют планы наших заказчиков.

Постоянным наблюдением каждого из наших производственных процессов обеспечиваем достижение нашей цели.

Традиция производства, многолетний опыт из развития, квалифицированный коллектив сотрудников, соответствующее производное оборудование и освоенная система управления качества производного процесса гарантируют аккуратное выполнение требований каждого заказчика.

Нашими преимуществами являются:

- качество изделия
- конкурентоспособные цены
- короткие сроки поставки
- предпродажный сервис
- профессиональные консультации
- поставки прямо к заказчику

НОВОЕ ИЗДЕЛИЕ

При обсуждению требований на новое изделие мы готовы предложить вам:

- сотрудничество для оптимального решения конфигурации изделия,
- выбор наиболее подходящего материала, учитывая полезные свойства изделия,
- разработка новой смеси по специфическому заданию,
- выработка чертежной документации пресс-формы для изделия с использованием систем CAD/CAM,
- изготовление испытательной пресс-формы и передача испытательных образцов,
- изготовление пресс-форм для резиновых деталей даже и с очень сложным фасоном.

АМОРТИЗАТОРЫ

Составной частью резиновых и резино-металлических изделий является также товарная группа АМОРТИЗАТОРЫ.

АО «RUBENA» выпускает на заводе в г. Градец Кралове резино-металлические антивибрационные компоненты - амортизаторы уже свыше 50 лет. Они предназначены для упругой установки, затухания набросов, активной и пассивной изоляции колебаний, шумовой изоляции, передачи сил, защитной установки и т. п. Высокий уровень технологии и широкий ассортимент использованных резиновых смесей позволяет изготовление высококачественных антивибрационных компонентов требуемых свойств.

В процессе производства применяются современные технологии как в области подготовки металлических арматуры, так и в области прессования. К основным использованным для производства материалам принадлежат резины на основе NR и SBR. Особое значение имеет контроль изделий и производственного процесса.

Нашей целью является обеспечение безпроблемной функциональности и срока службы выпускаемых нами изделий и тем также долговременное удовольствие наших партнеров.

ИСПОЛЬЗОВАННЫЕ РЕЗИНЫ

Амортизаторы изготавливаются из резин на основе NR, SBR и NBR со стандартной твердостью 55 Шор А, если не установлено иначе. По заказу возможно использовать резины твердостью в пределах от 30 до 85 Шор А.

РАЗМЕРНЫЕ ДОПУСКИ

Стандартные модели (типы) амортизаторов поставляются с размерными допусками согласно DIN 7715, часть 2, класс M4 – см. таблицу.

Размер		Допуск	F ±	C ±
	до 6,3	mm	0,5	0,5
от 6,3	до 10	mm	0,7	0,7
от 10	до 16	mm	0,8	0,8
от 16	до 25	mm	1,0	1,0
от 25	до 40	mm	1,3	1,3
от 40	до 63	mm	1,6	1,6
от 63	до 100	mm	2,0	2,0
от 100	до 160	mm	2,5	2,5
от 160		%	1,5	1,5

УПАКОВКА

Амортизаторы отправляются в бумажных или полиэтиленовых мешках, картонных коробках или поддонах. В одной упаковке отправляются только амортизаторы одного типа и размера.

ХРАНЕНИЕ

При соблюдении условий хранения согласно ČSN 63 0001, возможно хранить амортизаторы 7 лет.

ДЕЛОВЫЕ КОНТАКТЫ - ОПТОВЫЙ СКЛАД

RUBENA a.s.

Servisní sklad

Ceských bratři 338

547 36 Nachod

Czech Republic

тел.: +420 491 447 559

факс: +420 491 447 569

E-mail: sklad@rubena.cgs.cz

E-shop: www.rubena.cz

ПРИМЕР ЗАЯВКИ

Цилиндрический амортизатор, Тип 2, 10/8 – M3x10 и количество штук.

Цилиндрический амортизатор, Тип 1, 10/10 – M4x10/M4x5 и количество штук.

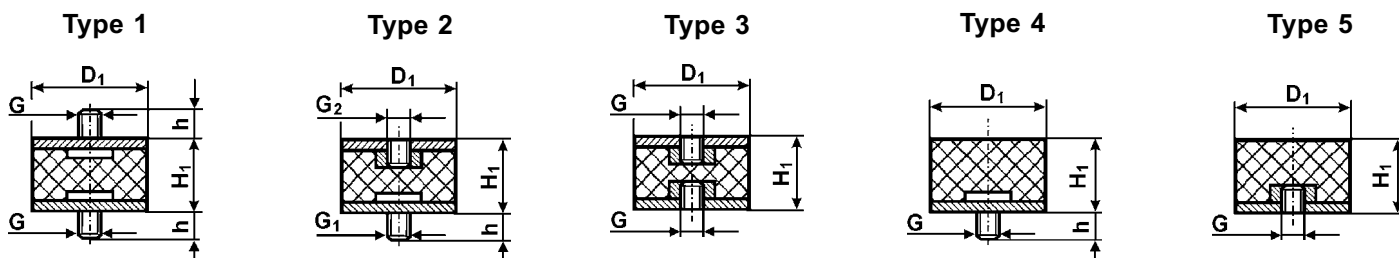
Буфер, Тип – KD, 25/17 – M6x18 и количество штук.

Цену, минимальное количество и срок поставки рады сообщим на основе конкретного запроса.

STANDARD VIBRATION DAMPERS

VÁLCOVÉ PRUŽINY STANDARDNÍ

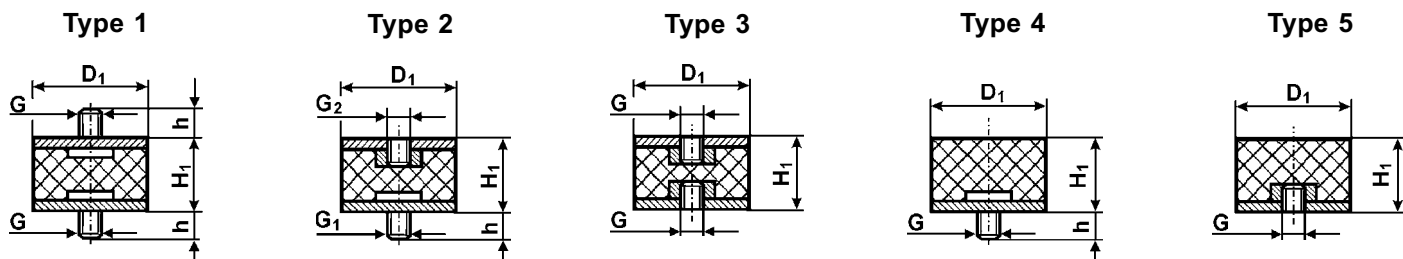
ЦИЛИНДРИЧЕСКИЕ АМОТИЗАТОРЫ - СТАНДАРТНЫЕ



D ₁	H ₁	Thread 1 Závit 1 Винт 1 (Gxh)	Thread 2 Závit 2 Винт 2 (Gxh)	ShA Шор А	Shape Tvar Модель	Type Typ Тип
6	7	M 3x 6	-	55	-	1
6	7	M 3x 6	M 3x 3	55	-	1
6	7	M 3x10	-	55	-	1
6	7	M 2x 6	-	55	-	2
6	7	M 3x 4	-	55	-	2
6	7	M 3x 6	-	55	-	2
6	7	M 3	-	55	-	3
6	7	M 3x 6	-	55	-	4
6	13	M 3x 6	-	55	-	1
8	5	M 3x 4	-	55	-	1
8	5	M 3x 6	-	55	-	4
8	6	M 3x 6	-	55	-	1
8	6	M 3x 6	M 3x 3	55	-	1
8	6	M 3x 6	-	55	-	2
8	6	M 4x 6	-	55	-	2
8	6	M 3x 6	-	55	-	4
8	6	M 4x 6	-	55	-	4
8	6	M 4x10	-	55	-	4
8	8	M 3x 4	-	55	-	1
8	8	M 3x 6	-	55	-	1
8	8	M 3x10	-	55	-	1
8	8	M 3x15	-	55	-	1
8	8	M 3x 3	-	55	-	2
8	8	M 3x 5	-	55	-	2
8	8	M 3x 6	-	55	-	2
8	8	M 3x 8	-	55	-	2
8	8	M 3x10	-	55	-	2
8	8	M 4x 5	-	55	-	2
8	8	M 4x 6	-	55	-	2
8	8	M 4x10	-	55	-	2
8	8	M 3	-	55	-	3
8	8	M 3x 4	-	55	-	4
8	8	M 3x 6	-	55	-	4
8	8	M 3	-	55	-	5
8	10	M 3x 6	-	55	-	1
8	10	M 3x 6	-	55	-	2
8	10	M 3	-	55	-	3
8	13	M 3x 4	-	55	-	2
8	13	M 3x 6	-	55	-	2
8	13	M 3	-	55	-	5
8	15	M 3x 4	-	55	-	2
8	15	M 3x 6	-	55	-	2
8	15	M 3	-	55	-	3

D ₁	H ₁	Thread 1 Závit 1 Винт 1 (Gxh)	Thread 2 Závit 2 Винт 2 (Gxh)	ShA Шор А	Shape Tvar Модель	Type Typ Тип
9	7	M 4x12	-	55	-	4
9	12	M 4x 6	-	55	-	1
9	12	M 4x12	-	55	-	1
9	12	M 4x12	-	55	-	4
9	12	M 4	-	55	-	5
10	5	M 4x10	-	55	-	1
10	5	M 4x 6	-	55	-	4
10	5	M 5x10	-	55	-	4
10	6	M 3x 6	-	55	-	1
10	6	M 4x 6	-	55	-	1
10	6	M 4x10	-	55	-	1
10	6	M 3x 6	-	55	-	4
10	6	M 4x 6	-	55	-	4
10	6	M 4x10	-	55	-	4
10	6	M 4x15	-	55	-	4
10	6	M 6x15	-	55	-	4
10	8	M 3x 6	-	55	-	1
10	8	M 3x 9	-	55	-	1
10	8	M 4x 6	-	55	-	1
10	8	M 4x10	-	55	-	1
10	8	M 3x 3	-	55	-	2
10	8	M 3x 6	-	55	-	2
10	8	M 3x10	-	55	-	2
10	8	M 4x 4	-	55	-	2
10	8	M 4x 5	-	55	-	2
10	8	M 4x 6	-	55	-	2
10	8	M 4x10	-	55	-	2
10	8	M 4	-	55	-	3
10	8	M 3x 6	-	55	-	4
10	8	M 4x 6	-	55	-	4
10	8	M 4x 8	-	55	-	4
10	8	M 4x10	-	55	-	4
10	8	M 4x12	-	55	-	4
10	8	M 4x15	-	55	-	4
10	8	M 5x12	-	55	-	4
10	8	M 4	-	55	-	5
10	10	M 3x 6	-	55	-	1
10	10	M 4x 5	-	55	-	1
10	10	M 4x 6	-	55	-	1
10	10	M 4x 8	-	55	-	1
10	10	M 4x10	-	55	-	1
10	10	M 4x10	M 4x 5	55	-	1
10	10	M 4x10	M 4x 6	55	-	1

Note: Thread 2 = Thread 1 unless otherwise specified. / Poznámka: Závit 2 = Závit 1 pokud není uvedeno jinak. / Заметка: Винт 2 = Винт 1, если не установлено иначе.

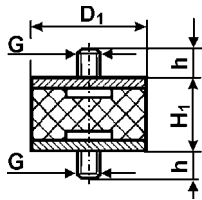


D ₁	H ₁	Thread 1 Závit 1 Винт 1 (Gxh)	Thread 2 Závit 2 Винт 2 (Gxh)	ShA Шор А	Shape Tvar Модель	Typ Тур Тип
10	10	M 3x 4	-	55	-	2
10	10	M 3x 6	-	55	-	2
10	10	M 3x10	-	55	-	2
10	10	M 4x 4	-	55	-	2
10	10	M 4x 5	-	55	-	2
10	10	M 4x 6	-	55	-	2
10	10	M 4x 8	-	55	-	2
10	10	M 4x 9	-	55	-	2
10	10	M 4x10	-	55	-	2
10	10	M 4x12	-	55	-	2
10	10	M 3	-	55	-	3
10	10	M 4	-	55	-	3
10	10	M 4x 6	-	55	-	4
10	10	M 4x 8	-	55	-	4
10	10	M 4x10	-	55	-	4
10	10	M 4x13	-	55	-	4
10	10	M 5x10	-	55	-	4
10	10	M 4	-	55	-	5
10	15	M 4x 4	-	55	-	1
10	15	M 4x10	-	55	-	1
10	15	M 4x12	-	55	-	1
10	15	M 4x15	-	55	-	1
10	15	M 5x 5	-	55	-	1
10	15	M 5x10	-	55	-	1
10	15	M 5x12	-	55	-	1
10	15	M 3x10	-	55	-	2
10	15	M 4x 6	-	55	-	2
10	15	M 4x10	-	55	-	2
10	15	M 5x 5	-	55	-	2
10	15	M 5x 6	-	55	-	2
10	15	M 5x10	-	55	-	2
10	15	M 5x12	M 4	55	-	2
10	15	M 6x15	-	55	-	2
10	15	M 3	-	55	-	3
10	15	M 4	-	55	-	3
10	15	M 5	-	55	-	3
10	15	M 4x 8	-	55	-	4
10	15	M 4x10	-	55	-	4
10	15	M 4x15	-	55	-	4
10	15	M 5x10	-	55	-	4
10	15	M 5x12	-	55	-	4
10	15	M 8x23	-	55	-	4
10	15	M 4	-	55	-	4
10	17	M 4x10	-	55	-	4
10	17	M 3x 3	-	55	-	4
10	17	M 3x 6	-	55	-	4
10	17	M 4x10	-	55	-	4
10	18	M 4x 6	-	55	-	4
10	18	M 4x13	-	55	-	4
10	18	M 3	-	55	-	4

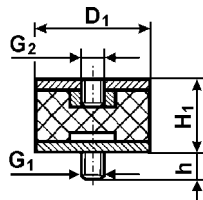
D ₁	H ₁	Thread 1 Závit 1 Винт 1 (Gxh)	Thread 2 Závit 2 Винт 2 (Gxh)	ShA Шор А	Shape Tvar Модель	Typ Тур Тип
10	18	M 4	-	55	-	
10	18	M 5	-	55	-	
10	18	M 4	-	55	-	5
10	30	M 4x10	-	55	-	
10	30	M 4x 6	-	55	-	
11	11	M 4x10	-	55	-	
11	11	M 4x10	-	55	-	
11	11	M 4	-	55	-	
11	11	M 4	-	55	-	
12	5	M 5x12	-	55	-	
12	6,5	M 5x 6	-	55	-	
12	6,5	M 5x 6	-	55	-	
12	6,5	M 5x10	-	55	-	
12	7	M 4x10	-	55	-	
12	10	M 4x 8	-	55	-	1
12	10	M 5x 8	-	55	-	
12	10	M 5x10	-	55	-	
12	10	M 5x12	-	55	-	
12	10	M 4x 8	-	55	-	
12	10	M 4x10	-	55	-	
12	10	M 5x13	-	55	-	
12	10	M 5x10	-	55	-	
12	10	M 5x12	-	55	-	
12	10	M 5	-	55	-	
12	15	M 4x10	-	50	51.12	
12	19	M 5x13	-	55	-	
13	10	M 4x10	-	55	-	
13	10	M 5x10	-	55	-	
13	15	M 5x10	-	55	-	
13	15	M 5x10	-	55	-	
13	8	M 4x 9	-	55	-	
13	13	M 6	-	55	-	
13	20	M 4x12	-	55	-	
13	26	M 4x 6	-	55	-	
13	26	M 4x10	-	55	-	
13	26	M 4	-	55	-	
13	26	M 4	-	55	-	
15	4	M 4x 8	-	55	-	
15	4	M 4x 6	-	55	-	
15	4	M 4x 7	-	55	-	
15	4	M 4x 8	-	55	-	
15	4	M 4x10	-	55	-	
15	4	M 5x18	-	55	-	
15	5	M 4x10	-	55	-	
15	5	M 6x10	M 6x 6	55	-	1
15	5	M 6x15	M 6x 6	55	-	1
15	5	M 4x 6	-	55	-	4
15	5	M 4x 8	-	55	-	4
15	5	M 4x15	-	55	-	4
15	6	M 4x 8	-	55	-	1

Note: Thread 2 = Thread 1 unless otherwise specified. / Poznámka: Závit 2 = Závit 1 pokud není uvedeno jinak. / Заметка: Винт 2 = Винт 1, если не установлено иначе.

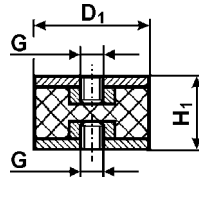
Type 1



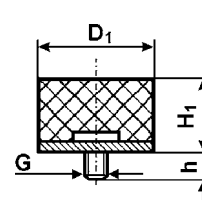
Type 2



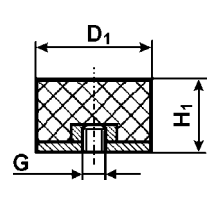
Type 3



Type 4



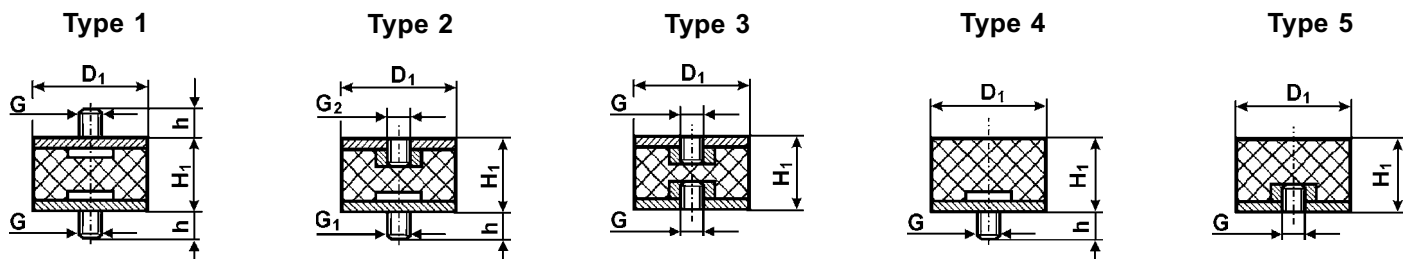
Type 5



D ₁	H ₁	Thread 1 Závit 1 Винт 1 (Gxh)	Thread 2 Závit 2 Винт 2 (Gxh)	ShA Шор A	Shape Tvar Модель	Typ Тип
15	6	M 4x10	-	55	-	1
15	6	M 6x10	-	55	-	1
15	6	M 4x 5	-	55	-	4
15	6	M 4x 6	-	55	-	4
15	6	M 4x 7	-	55	-	4
15	6	M 4x 8	-	55	-	4
15	6	M 4x10	-	55	-	4
15	6	M 4x12	-	55	-	4
15	6	M 4x13	-	55	-	4
15	6	M 4x15	-	55	-	4
15	6	M 6x 8	-	55	-	4
15	6	M 6x10	-	55	-	4
15	6	M 4	-	55	-	5
15	7	M 4x10	-	55	-	1
15	7	M 4x 6	-	55	-	4
15	7	M 4x10	-	55	-	4
15	7	M 5x12	-	55	-	4
15	7	M 6x16	-	55	-	4
15	7	M 6x20	-	55	-	4
15	7	M 6x26	-	55	-	4
15	7,5	M 6x16	-	55	-	4
15	8	M 4x 5	-	55	-	1
15	8	M 4x 6	-	55	-	1
15	8	M 4x 8	-	55	-	1
15	8	M 4x10	-	55	-	1
15	8	M 4x13	-	55	-	1
15	8	M 5x 8	-	55	-	1
15	8	M 5x10	-	55	-	1
15	8	M 5x15	-	55	-	1
15	8	M 3x 4	-	55	-	2
15	8	M 4x 6	-	55	-	2
15	8	M 4x10	-	55	-	2
15	8	M 4x 5	-	55	-	4
15	8	M 4x 6	-	55	-	4
15	8	M 4x 8	-	55	-	4
15	8	M 4x10	-	55	-	4
15	8	M 4x12	-	55	-	4
15	8	M 4x13	-	55	-	4
15	8	M 4x15	-	55	-	4
15	8	M 4x18	-	55	-	4
15	8	M 5x10	-	55	-	4
15	8	M 5x12	-	55	-	4
15	8	M 5x15	-	55	-	4
15	8	M 6x 8	-	55	-	4
15	8	M 8x55	-	55	-	4
15	8	M 3	-	55	-	5
15	8	M 4	-	55	-	5
15	9	M 5x12	-	55	-	1
15	9	M 5x 8	-	55	-	4
15	9	M 5x12	-	55	-	4

D ₁	H ₁	Thread 1 Závit 1 Винт 1 (Gxh)	Thread 2 Závit 2 Винт 2 (Gxh)	ShA Шор A	Shape Tvar Модель	Typ Тип
15	9	M 5	-	55	-	5
15	10	M 4x10	-	55	-	1
15	10	M 5x 8	-	55	-	1
15	10	M 5x10	-	55	-	1
15	10	M 5x12	-	55	-	1
15	10	M 6x 8	-	55	-	1
15	10	M 6x10	-	55	-	1
15	10	M 8x20	-	55	-	1
15	10	M 3x 6	-	55	-	2
15	10	M 4x 8	-	55	-	2
15	10	M 4x10	-	55	-	2
15	10	M 4x13	-	55	-	2
15	10	M 5x 4	-	55	-	2
15	10	M 5x 8	-	55	-	2
15	10	M 5x10	-	55	-	2
15	10	M 5x13	-	55	-	2
15	10	M 6x18	-	55	-	2
15	10	M 4	-	55	-	3
15	10	M 5	-	55	-	3
15	10	M 4x 8	-	55	-	4
15	10	M 4x10	-	55	-	4
15	10	M 4x13	-	55	-	4
15	10	M 5x 8	-	55	-	4
15	10	M 5x10	-	55	-	4
15	10	M 5x12	-	55	-	4
15	10	M 5x15	-	55	-	4
15	10	M 5x28	-	55	-	4
15	10	M 6x 6	-	55	-	4
15	10	M 6x12	-	55	-	4
15	10	M 6x15	-	55	-	4
15	10	M 6x18	-	55	-	4
15	10	M 6x23	-	55	-	4
15	10	M 6x25	-	55	-	4
15	10	M 6x28	-	55	-	4
15	10	M 4	-	55	-	5
15	10	M 8	-	55	-	5
15	12	M 4x 8	-	55	-	1
15	12	M 4x 6	-	55	-	2
15	12	M 4x13	-	55	-	2
15	12	M 4x 8	-	55	-	4
15	12	M 4x12	-	55	-	4
15	12	M 4	-	55	-	5
15	13	M 3x 6	-	55	-	1
15	13	M 4x10	-	55	-	1
15	13	M 4x15	-	55	-	1
15	13	M 4x10	-	55	-	2
15	13	M 6x20	-	55	-	2
15	13	M 4x 5	-	55	-	4
15	13	M 4x 8	-	55	-	4
15	13	M 4x10	-	55	-	4

Note: Thread 2 = Thread 1 unless otherwise specified. / Poznámka: Závit 2 = Závit 1 pokud není uvedeno jinak. / Заметка: Винт 2 = Винт 1, если не установлено иначе.

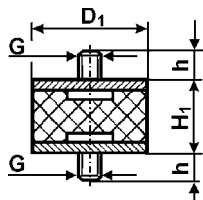


D ₁	H ₁	Thread 1 Závit 1 Винт 1 (Gxh)	Thread 2 Závit 2 Винт 2 (Gxh)	ShA Шор А	Shape Tvar Модель	Typ Тур Тип
15	13	M 4x13	-	55	-	4
15	13	M 4x15	-	55	-	4
15	13	M 5x10	-	55	-	4
15	13	M 6x12	-	55	-	4
15	13	M 4	-	55	-	5
15	15	M 4x 5	M 4x 8	55	-	1
15	15	M 4x 6	-	55	-	1
15	15	M 4x 6	M 4x 8	55	-	1
15	15	M 4x 8	-	55	-	1
15	15	M 4x10	-	55	-	1
15	15	M 4x12	-	55	-	1
15	15	M 4x12	M 5x15	55	-	1
15	15	M 4x13	-	55	-	1
15	15	M 4x14	-	55	-	1
15	15	M 4x15	-	55	-	1
15	15	M 4x18	-	55	-	1
15	15	M 4x19	-	55	-	1
15	15	M 5x 8	-	55	-	1
15	15	M 5x10	-	55	-	1
15	15	M 5x12	-	55	-	1
15	15	M 5x13	-	55	-	1
15	15	M 5x15	-	55	-	1
15	15	M 5x15	M 5x10	55	-	1
15	15	M 5x22	-	55	-	1
15	15	M 6x10	-	55	-	1
15	15	M 6x12	-	55	-	1
15	15	M 6x15	-	55	-	1
15	15	M 6x15	M 6x 5	55	-	1
15	15	M 6x18	-	55	-	1
15	15	M 3x 6	-	55	-	2
15	15	M 3x10	-	55	-	2
15	15	M 4x 5	-	55	-	2
15	15	M 4x 6	-	55	-	2
15	15	M 4x 8	-	55	-	2
15	15	M 4x10	-	55	-	2
15	15	M 4x12	-	55	-	2
15	15	M 4x13	-	55	-	2
15	15	M 4x14	-	55	-	2
15	15	M 4x15	-	55	-	2
15	15	M 4x19	-	55	-	2
15	15	M 5x 5	-	55	-	2
15	15	M 5x 6	-	55	-	2
15	15	M 5x 8	-	55	-	2
15	15	M 5x10	-	55	-	2
15	15	M 5x11	-	55	-	2
15	15	M 5x12	-	55	-	2
15	15	M 5x13	-	55	-	2
15	15	M 5x15	-	55	-	2
15	15	M 6x10	-	55	-	2
15	15	M 6x12	-	55	-	2

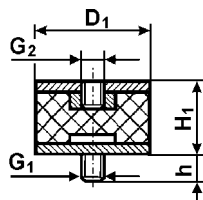
D ₁	H ₁	Thread 1 Závit 1 Винт 1 (Gxh)	Thread 2 Závit 2 Винт 2 (Gxh)	ShA Шор А	Shape Tvar Модель	Typ Тур Тип
15	15	M 6x15	-	55	-	2
15	15	M 3	-	55	-	3
15	15	M 4	-	55	-	3
15	15	M 5	-	55	-	3
15	15	M 6	-	55	-	3
15	15	M 4x 8	-	55	-	4
15	15	M 4x10	-	55	-	4
15	15	M 4x12	-	55	-	4
15	15	M 4x13	-	55	-	4
15	15	M 4x15	-	55	-	4
15	15	M 4x23	-	55	-	4
15	15	M 5x 8	-	55	-	4
15	15	M 5x10	-	55	-	4
15	15	M 5x12	-	55	-	4
15	15	M 5x15	-	55	-	4
15	15	M 6x12	-	55	-	4
15	15	M 6x16	-	55	-	4
15	15	M 6x28	-	55	-	4
15	15	M 6x50	-	55	-	4
15	15	M 4	-	55	-	5
15	15	M 5	-	55	-	5
15	15	M 6	-	55	-	5
15	18	M 5x10	-	55	-	1
15	18	M 6x12	-	55	-	1
15	18	M 4x 6	-	55	-	2
15	18	M 5x12	-	55	-	2
15	18	M 4x12	-	55	-	4
15	20	M 4x 8	-	55	-	1
15	20	M 4x10	-	55	-	1
15	20	M 4x12	-	55	-	1
15	20	M 4x13	-	55	-	1
15	20	M 5x10	-	55	-	1
15	20	M 5x10	M 5x15	55	-	1
15	20	M 5x12	-	55	-	1
15	20	M 5x13	-	55	-	1
15	20	M 5x15	-	55	-	1
15	20	M 5x20	-	55	-	1
15	20	M 6x18	-	55	-	1
15	20	M 6x23	-	55	-	1
15	20	M 4x 5	-	55	-	2
15	20	M 4x 6	-	55	-	2
15	20	M 4x 6	M 4x 5	55	-	2
15	20	M 4x 8	-	55	-	2
15	20	M 4x10	-	55	-	2
15	20	M 4x12	-	55	-	2
15	20	M 4x13	-	55	-	2
15	20	M 5x 4	-	55	-	2
15	20	M 5x 6	-	55	-	2
15	20	M 5x 7	-	55	-	2
15	20	M 5x 8	-	55	-	2

Note: Thread 2 = Thread 1 unless otherwise specified. / Poznámka: Závit 2 = Závit 1 pokud není uvedeno jinak. / Заметка: Винт 2 = Винт 1, если не установлено иначе.

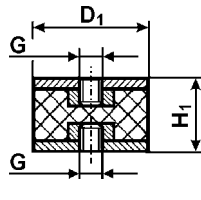
Type 1



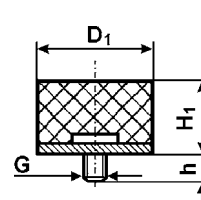
Type 2



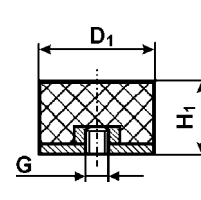
Type 3



Type 4



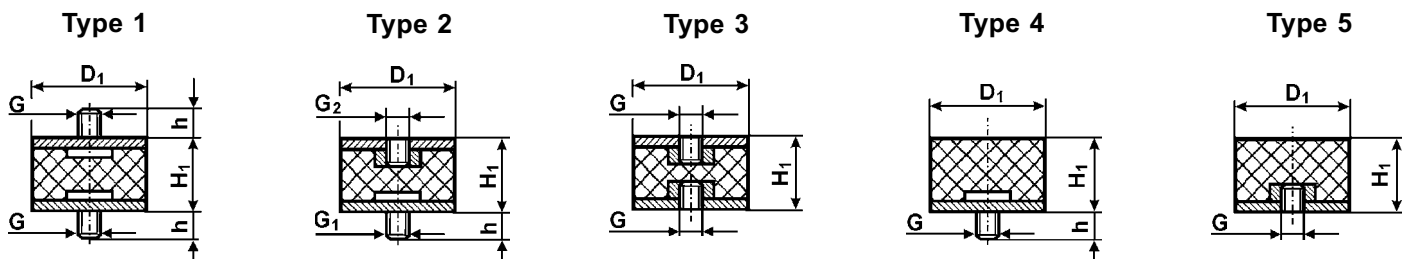
Type 5



D ₁	H ₁	Thread 1 Závit 1 Винт 1 (Gxh)	Thread 2 Závit 2 Винт 2 (Gxh)	ShA Шор A	Shape Tvar Модель	Typ Тур Тип
15	20	M 5x10	-	55	-	2
15	20	M 5x12	-	55	-	2
15	20	M 5x15	-	55	-	2
15	20	M 6x18	-	55	-	2
15	20	M 4	-	55	-	3
15	20	M 5	-	55	-	3
15	20	M 6	-	55	-	3
15	20	M 4x 6	-	55	-	4
15	20	M 4x10	-	55	-	4
15	20	M 4x13	-	55	-	4
15	20	M 5x 7	-	55	-	4
15	20	M 5x10	-	55	-	4
15	20	M 5x12	-	55	-	4
15	20	M 6x15	-	55	-	4
15	20	M 4	-	55	-	5
15	25	M 4x10	-	55	-	1
15	25	M 4x15	-	55	-	1
15	25	M 4x 6	-	55	-	2
15	25	M 4x 8	-	55	-	2
15	25	M 4x10	-	55	-	2
15	25	M 4x13	-	55	-	2
15	25	M 4x15	-	55	-	2
15	25	M 5x15	-	55	-	2
15	25	M 4	-	55	-	3
15	25	M 6	-	55	-	3
15	25	M 4x 8	-	55	-	4
15	25	M 4x10	-	55	-	4
15	25	M 4	-	55	-	5
15	26	M 4	-	55	-	3
15	30	M 3x13	-	55	-	1
15	30	M 4x10	-	55	-	1
15	30	M 4x13	-	55	-	1
15	30	M 4x15	-	55	-	1
15	30	M 5x15	-	55	-	1
15	30	M 6x15	-	55	-	1
15	30	M 6x18	-	55	-	1
15	30	M 4x 5	-	55	-	2
15	30	M 4x 8	-	55	-	2
15	30	M 4x10	-	55	-	2
15	30	M 4x12	-	55	-	2
15	30	M 4x15	-	55	-	2
15	30	M 4x20	-	55	-	2
15	30	M 5x13	-	55	-	2
15	30	M 6x10	-	55	-	2
15	30	M 4	-	55	-	3
15	30	M 5	-	55	-	3
15	30	M 6	-	55	-	3
15	30	M 4x 8	-	55	-	4
15	30	M 4x10	-	55	-	4
15	30	M 4	-	55	-	5

D ₁	H ₁	Thread 1 Závit 1 Винт 1 (Gxh)	Thread 2 Závit 2 Винт 2 (Gxh)	ShA Шор A	Shape Tvar Модель	Typ Тур Тип
16	15	M 5x10	-	55	-	1
16	18	M 6x10	-	55	-	1
16	18	M 5	-	55	-	3
16	18	M 6x10	-	55	-	4
18	5,7	M 6x15	-	55	-	4
18	6	M 6x 8	-	55	-	1
18	7,5	M 6x10	-	55	-	1
18	7,5	M 5x 6	-	55	-	4
18	7,5	M 6x 8	-	55	-	4
18	7,5	M 6x10	-	55	-	4
18	7,5	M 6x15	-	55	-	4
18	7,5	M 6x16	-	55	-	4
18	7,5	M 6x18	-	55	-	4
18	7,5	M 6x25	-	55	-	4
18	8,1	M 6x16	-	55	-	1
18	8,5	M 6x13	-	55	-	1
18	8,5	M 6x15	-	55	-	1
18	8,5	M 6x16	-	55	-	1
18	8,5	M 8x30	-	55	-	4
18	13	M 6x18	-	55	-	4
18	13	M 6x20	-	55	-	4
18	14	M 6x20	-	55	-	4
18	15	M 6x10	-	55	-	1
18	15	M 6x18	-	55	-	1
18	15	M 6x18	M 6x12	55	-	1
18	20	M 6x10	-	40	42.12	1
18	20	M 6x10	-	50	42.12	1
18	20	M 6x10	-	60	42.12	1
19	6	M 8x20	-	55	-	4
20	20	M 6x10	M 5x 5	55	-	2
20	5	M 6x 6	-	55	-	4
20	5	M 6x 8	-	55	-	4
20	5	M 6x10	-	55	-	4
20	5	M 6x12	-	55	-	4
20	5	M 6x15	-	55	-	4
20	5	M 6x18	-	55	-	4
20	5	M 8x20	-	55	-	4
20	6	M 6x15	-	55	-	4
20	6	M 8x20	-	55	-	4
20	7	M 6x28	-	55	-	4
20	8	M 5x 8	-	55	-	1
20	8	M 5x 9	-	55	-	1
20	8	M 6x 8	-	55	-	1
20	8	M 6x10	-	55	-	1
20	8	M 6x10	M 6x 5	55	-	1
20	8	M 6x11	-	55	-	1
20	8	M 6x12	-	55	-	1
20	8	M 6x15	-	55	-	1
20	8	M 6x15	M 6x10	55	-	1
20	8	M 6x15	M 6x12	55	-	1

Note: Thread 2 = Thread 1 unless otherwise specified. / Poznámka: Závit 2 = Závit 1 pokud není uvedeno jinak. / Заметка: Винт 2 = Винт 1, если не установлено иначе.

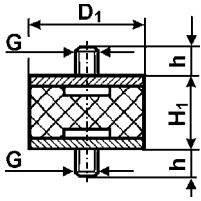


D ₁	H ₁	Thread 1 Závit 1 Винт 1 (Gxh)	Thread 2 Závit 2 Винт 2 (Gxh)	ShA Шор А	Shape Tvar Модель	Typ Тур Тип
20	8	M 6x16	-	55	-	1
20	8	M 6x18	-	55	-	1
20	8	M 6x18	M 6x12	55	-	1
20	8	M 8x12	-	55	-	1
20	8	M 8x20	-	55	-	1
20	8	M 8x23	-	55	-	1
20	8	M 5x 8	-	55	-	4
20	8	M 5x15	-	55	-	4
20	8	M 6x 8	-	55	-	4
20	8	M 6x12	-	55	-	4
20	8	M 6x14	-	55	-	4
20	8	M 6x15	-	55	-	4
20	8	M 6x18	-	55	-	4
20	8	M 6x23	-	55	-	4
20	8	M 6x28	-	55	-	4
20	8	M 6x33	-	55	-	4
20	8	M 8x28	-	55	-	4
20	8	M 8x33	-	55	-	4
20	8	M 8x35	-	55	-	4
20	8	M10x48	-	55	-	4
20	9	M 6x15	-	55	-	1
20	10	M 4x10	-	55	-	1
20	10	M 5x 8	-	55	-	1
20	10	M 5x10	-	55	-	1
20	10	M 5x11	-	55	-	1
20	10	M 6x 6	-	55	-	1
20	10	M 6x 8	-	55	-	1
20	10	M 6x10	-	55	-	1
20	10	M 6x12	-	55	-	1
20	10	M 6x12	M 6x 5	55	-	1
20	10	M 6x15	-	55	-	1
20	10	M 6x18	-	55	-	1
20	10	M 8x20	-	55	-	1
20	10	M 4x 8	-	55	-	2
20	10	M 5x11	-	55	-	2
20	10	M 6x 5	-	55	-	2
20	10	M 6x 8	-	55	-	2
20	10	M 6x10	-	55	-	2
20	10	M 6x15	-	55	-	2
20	10	M 6x18	-	55	-	2
20	10	M 5x10	-	55	-	4
20	10	M 6x 8	-	55	-	4
20	10	M 6x10	-	55	-	4
20	10	M 6x12	-	55	-	4
20	10	M 6x15	-	55	-	4
20	10	M 6x18	-	55	-	4
20	10	M 6x24	-	55	-	4
20	10	M 6x28	-	55	-	4
20	10	M 6x38	-	55	-	4
20	10	M 8x20	-	55	-	4

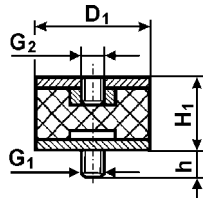
D ₁	H ₁	Thread 1 Závit 1 Винт 1 (Gxh)	Thread 2 Závit 2 Винт 2 (Gxh)	ShA Шор А	Shape Tvar Модель	Typ Тур Тип
20	10	M 8x23	-	55	-	4
20	10	M 4	-	55	-	5
20	10	M 6	-	55	-	5
20	11	M 5x11	-	55	-	1
20	11	M 5x11	-	55	-	2
20	11	M 6x10	-	55	-	2
20	11	M 6x18	-	55	-	4
20	11	M 6	-	55	-	5
20	12	M 5x10	-	55	-	1
20	12	M 6x 8	-	55	-	1
20	12	M 6x15	-	55	-	1
20	12	M 6x18	-	55	-	1
20	12	M 5x 6	-	55	-	2
20	12	M 6x15	-	55	-	2
20	12	M 5x 8	-	55	-	4
20	12	M 5x10	-	55	-	4
20	12	M 5x24	-	55	-	4
20	12	M 6x 6	-	55	-	4
20	12	M 6x 8	-	55	-	4
20	12	M 6x10	-	55	-	4
20	12	M 6x12	-	55	-	4
20	12	M 6x14	-	55	-	4
20	12	M 6x15	-	55	-	4
20	12	M 6x16	-	55	-	4
20	12	M 6x18	-	55	-	4
20	12	M 6x20	-	55	-	4
20	12	M 6x28	-	55	-	4
20	12	M 6x35	-	55	-	4
20	12	M 8x12	-	55	-	4
20	12	M 8x20	-	55	-	4
20	12	M 8x23	-	55	-	4
20	12	M 6	-	55	-	5
20	13	M 6x18	-	55	-	1
20	13	M 4x10	-	55	-	4
20	13	M 4x15	-	55	-	4
20	13	M 6x10	-	55	-	4
20	13	M 6x12	-	55	-	4
20	13	M 6x15	-	55	-	4
20	13	M 6x16	-	55	-	4
20	13	M 6x18	-	55	-	4
20	13	M 6x23	-	55	-	4
20	13	M 6x30	-	55	-	4
20	13	M 6	-	55	-	5
20	13,5	M 4x15	-	55	-	4
20	13,5	M 6x 8	-	55	-	4
20	13,5	M 6x15	-	55	-	4
20	13,5	M 6x18	-	55	-	4
20	13,5	M 6x24	-	55	-	4
20	13,5	M10x40	-	55	-	4
20	13,5	M 6	-	55	-	5

Note: Thread 2 = Thread 1 unless otherwise specified. / Poznámka: Závit 2 = Závit 1 pokud není uvedeno jinak. / Заметка: Винт 2 = Винт 1, если не установлено иначе.

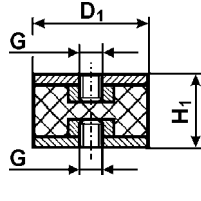
Type 1



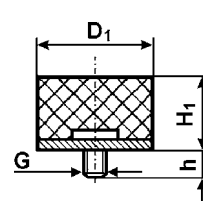
Type 2



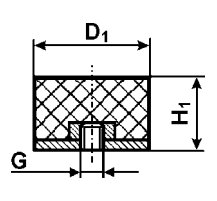
Type 3



Type 4



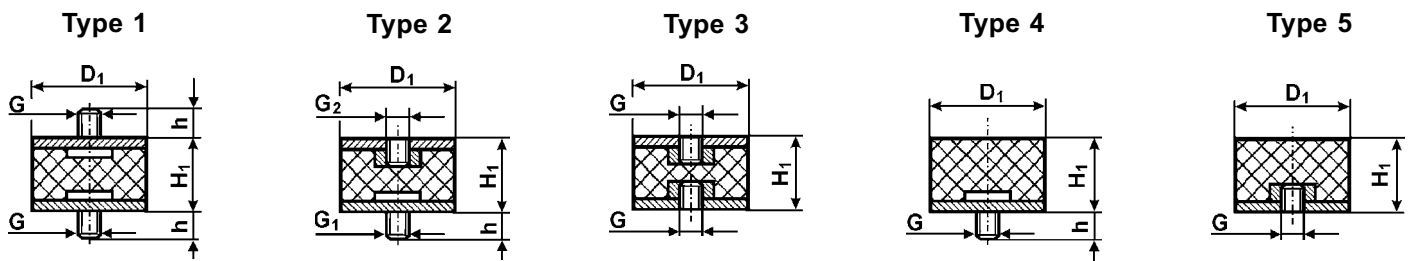
Type 5



D ₁	H ₁	Thread 1 Závit 1 Винт 1 (Gxh)	Thread 2 Závit 2 Винт 2 (Gxh)	ShA Шор A	Shape Tvar Модель	Typ Тип
20	15	M 4x 8	-	55	-	1
20	15	M 4x10	-	55	-	1
20	15	M 5x13	-	55	-	1
20	15	M 5x15	-	55	-	1
20	15	M 6x 8	-	55	-	1
20	15	M 6x10	-	55	-	1
20	15	M 6x10	M 5x30	55	-	1
20	15	M 6x12	-	55	-	1
20	15	M 6x15	-	55	-	1
20	15	M 6x15	M 5x10	55	-	1
20	15	M 6x15	M 6x10	55	-	1
20	15	M 6x16	-	55	-	1
20	15	M 6x18	-	55	-	1
20	15	M 6x18	M 6x 8	55	-	1
20	15	M 6x20	M 6x10	55	-	1
20	15	M 6x28	-	55	-	1
20	15	M 8x15	-	55	-	1
20	15	M 8x15	M 8x10	55	-	1
20	15	M 8x20	-	55	-	1
20	15	M 8x23	-	55	-	1
20	15	M 4x10	-	55	-	2
20	15	M 4x12	-	55	-	2
20	15	M 4x15	-	55	-	2
20	15	M 5x 4	-	55	-	2
20	15	M 5x 8	-	55	-	2
20	15	M 5x10	-	55	-	2
20	15	M 5x12	-	55	-	2
20	15	M 5x15	-	55	-	2
20	15	M 5x19	-	55	-	2
20	15	M 6x 4	-	55	-	2
20	15	M 6x 6	-	55	-	2
20	15	M 6x 8	-	55	-	2
20	15	M 6x10	-	55	-	2
20	15	M 6x12	-	55	-	2
20	15	M 6x14	-	55	-	2
20	15	M 6x15	-	55	-	2
20	15	M 6x16	-	55	-	2
20	15	M 6x18	-	55	-	2
20	15	M 6x20	-	55	-	2
20	15	M 8x 8	-	55	-	2
20	15	M 8x15	-	55	-	2
20	15	M 5	-	55	-	3
20	15	M 6	-	55	-	3
20	15	M 8	-	55	-	3
20	15	M 5x15	-	55	-	4
20	15	M 5x18	-	55	-	4
20	15	M 6x 6	-	55	-	4
20	15	M 6x 8	-	55	-	4
20	15	M 6x10	-	55	-	4
20	15	M 6x12	-	55	-	4

D ₁	H ₁	Thread 1 Závit 1 Винт 1 (Gxh)	Thread 2 Závit 2 Винт 2 (Gxh)	ShA Шор A	Shape Tvar Модель	Typ Тип
20	15	M 6x15	-	55	-	4
20	15	M 6x16	-	55	-	4
20	15	M 6x18	-	55	-	4
20	15	M 6x20	-	55	-	4
20	15	M 6x23	-	55	-	4
20	15	M 6x25	-	55	-	4
20	15	M 6x30	-	55	-	4
20	15	M 6x33	-	55	-	4
20	15	M 8x 8	-	55	-	4
20	15	M 8x10	-	55	-	4
20	15	M 8x15	-	55	-	4
20	15	M 8x23	-	55	-	4
20	15	M 8x28	-	55	-	4
20	15	M 8x35	-	55	-	4
20	15	M10x39	-	55	-	4
20	15	M 5	-	55	-	5
20	15	M 6	-	55	-	5
20	15	M 8	-	55	-	5
20	17	M 6x18	-	55	-	2
20	17	M 6x 8	-	55	-	4
20	17	M 6x15	-	55	-	4
20	17	M 6x18	-	55	-	4
20	17	M 6x20	-	55	-	4
20	17	M10x28	-	55	-	4
20	18	M 6x15	-	55	-	4
20	18	M 8x15	-	55	-	4
20	18,5	M 6x10	-	55	-	2
20	20	M 5x13	-	55	-	1
20	20	M 5x15	-	55	-	1
20	20	M 5x20	-	55	-	1
20	20	M 5x25	-	55	-	1
20	20	M 6x10	-	55	-	1
20	20	M 6x10	M 5x10	55	-	1
20	20	M 6x10	M 6x18	55	-	1
20	20	M 6x14	-	55	-	1
20	20	M 6x15	-	55	-	1
20	20	M 6x15	M 6x 8	55	-	1
20	20	M 6x18	-	55	-	1
20	20	M 6x20	-	55	-	1
20	20	M 6x20	M 6x10	55	-	1
20	20	M 8x10	-	55	-	1
20	20	M 8x20	-	55	-	1
20	20	M 5x 8	-	55	-	2
20	20	M 5x12	-	55	-	2
20	20	M 5x15	-	55	-	2
20	20	M 5x18	-	55	-	2
20	20	M 6x 5	-	55	-	2
20	20	M 6x 8	-	55	-	2
20	20	M 6x10	-	55	-	2
20	20	M 6x12	-	55	-	2

Note: Thread 2 = Thread 1 unless otherwise specified. / **Poznámka:** Závit 2 = Závit 1 pokud není uvedeno jinak. / **Заметка:** Винт 2 = Винт 1, если не установлено иначе.

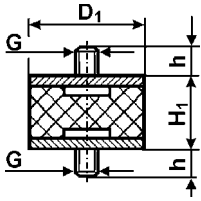


D ₁	H ₁	Thread 1 Závit 1 Винт 1 (Gxh)	Thread 2 Závit 2 Винт 2 (Gxh)	ShA Шор А	Shape Tvar Модель	Typ Тур Тип
20	20	M 6x15	-	55	-	2
20	20	M 6x16	-	55	-	2
20	20	M 6x18	-	55	-	2
20	20	M 6x20	-	55	-	2
20	20	M 8x23	-	55	-	2
20	20	M 4	-	55	-	3
20	20	M 5	-	55	-	3
20	20	M 6	-	55	-	3
20	20	M 8	-	55	-	3
20	20	M 4x10	-	55	-	4
20	20	M 5x15	-	55	-	4
20	20	M 6x 5	-	55	-	4
20	20	M 6x 8	-	55	-	4
20	20	M 6x10	-	55	-	4
20	20	M 6x12	-	55	-	4
20	20	M 6x15	-	55	-	4
20	20	M 6x18	-	55	-	4
20	20	M 6x20	-	55	-	4
20	20	M 6x23	-	55	-	4
20	20	M 6x25	-	55	-	4
20	20	M 6x43	-	55	-	4
20	20	M 8x10	-	55	-	4
20	20	M 8x20	-	55	-	4
20	20	M 8x25	-	55	-	4
20	20	M 8x33	-	55	-	4
20	20	M 8x35	-	55	-	4
20	20	M 8x43	-	55	-	4
20	20	M 8x48	-	55	-	4
20	20	M 8x78	-	55	-	4
20	20	M10x48	-	55	-	4
20	20	M 4	-	55	-	5
20	20	M 5	-	55	-	5
20	20	M 6	-	55	-	5
20	20	M 8	-	55	-	5
20	20	M10	-	55	-	5
20	22	M 6x18	-	55	-	1
20	22	M 6x18	-	55	-	2
20	23	M 6x15	-	55	-	4
20	23	M 6x18	-	55	-	4
20	23	M 6x25	-	55	-	4
20	23	M10	-	55	-	5
20	25	M 5x13	-	55	-	1
20	25	M 5x15	-	55	-	1
20	25	M 5x18	-	55	-	1
20	25	M 6x10	-	55	-	1
20	25	M 6x10	M 6x15	55	-	1
20	25	M 6x12	-	55	-	1
20	25	M 6x14	-	55	-	1
20	25	M 6x15	-	55	-	1
20	25	M 6x18	-	55	-	1

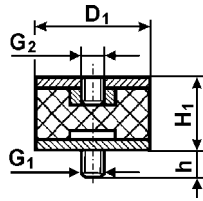
D ₁	H ₁	Thread 1 Závit 1 Винт 1 (Gxh)	Thread 2 Závit 2 Винт 2 (Gxh)	ShA Шор А	Shape Tvar Модель	Typ Тур Тип
20	25	M 6x24	-	55	-	1
20	25	M 6x25	-	55	-	1
20	25	M 6x28	-	55	-	1
20	25	M 6x28	M 6x18	55	-	1
20	25	M 6x30	-	55	-	1
20	25	M 6x35	-	55	-	1
20	25	M 6x38	-	55	-	1
20	25	M 5x11	-	55	-	2
20	25	M 5x12	-	55	-	2
20	25	M 5x15	-	55	-	2
20	25	M 6x 5	-	55	-	2
20	25	M 6x 6	-	55	-	2
20	25	M 6x 8	-	55	-	2
20	25	M 6x10	-	55	-	2
20	25	M 6x11	-	55	-	2
20	25	M 6x12	-	55	-	2
20	25	M 6x15	-	55	-	2
20	25	M 6x18	-	55	-	2
20	25	M 6x20	-	55	-	2
20	25	M 6x25	-	55	-	2
20	25	M 8x15	-	55	-	2
20	25	M 8x16	-	55	-	2
20	25	M 4	-	55	-	3
20	25	M 5	-	55	-	3
20	25	M 6	-	55	-	3
20	25	M 8	-	55	-	3
20	25	M 6x 8	-	55	-	4
20	25	M 6x10	-	55	-	4
20	25	M 6x12	-	55	-	4
20	25	M 6x15	-	55	-	4
20	25	M 6x18	-	55	-	4
20	25	M 6x25	-	55	-	4
20	25	M 8x18	-	55	-	4
20	25	M 8x20	-	55	-	4
20	25	M 6	-	55	-	5
20	30	M 6x 8	-	55	-	1
20	30	M 6x12	-	55	-	1
20	30	M 6x15	-	55	-	1
20	30	M 6x18	-	55	-	1
20	30	M 6x28	-	55	-	1
20	30	M 8x15	-	55	-	1
20	30	M 8x18	-	55	-	1
20	30	M 8x20	-	55	-	1
20	30	M 5x15	-	55	-	2
20	30	M 6x 8	-	55	-	2
20	30	M 6x12	-	55	-	2
20	30	M 6x15	-	55	-	2
20	30	M 6x18	-	55	-	2
20	30	M 8x13	-	55	-	2
20	30	M 8x15	-	55	-	2

Note: Thread 2 = Thread 1 unless otherwise specified. / Poznámka: Závit 2 = Závit 1 pokud není uvedeno jinak. / Заметка: Винт 2 = Винт 1, если не установлено иначе.

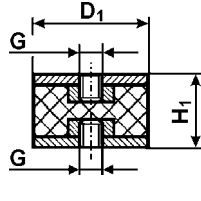
Type 1



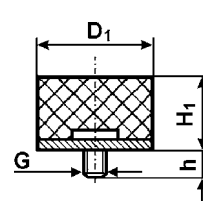
Type 2



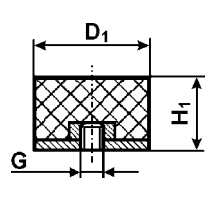
Type 3



Type 4



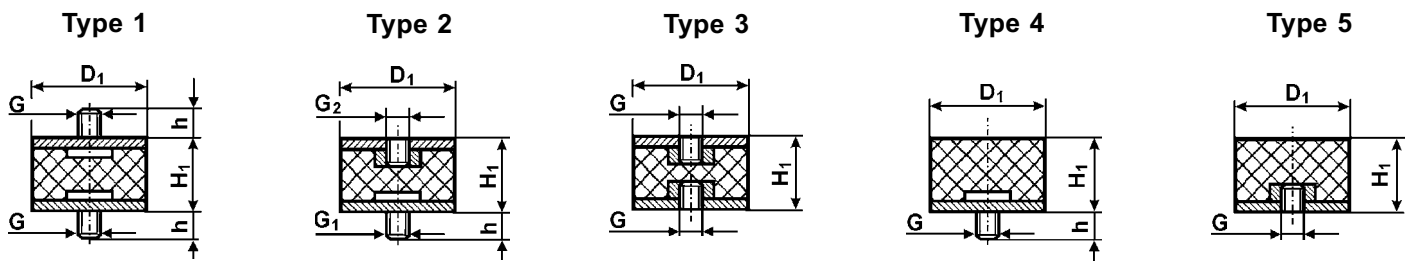
Type 5



D ₁	H ₁	Thread 1 Závit 1 Винт 1 (Gxh)	Thread 2 Závit 2 Винт 2 (Gxh)	ShA Шор А	Shape Твар Модель	Type Тур Тип
20	30	M 8x23	-	55	-	2
20	30	M 5	-	55	-	3
20	30	M 6	-	55	-	3
20	30	M 8	-	55	-	3
20	30	M 6x12	-	55	-	4
20	30	M 6x15	-	55	-	4
20	30	M 6x18	-	55	-	4
20	30	M 8x12	-	55	-	4
20	30	M 8x20	-	55	-	4
20	30	M10x28	-	55	-	4
20	30	M 6	-	55	-	5
20	40	M 6x12	-	55	-	1
20	40	M 6	-	55	-	5
20	60	M 6x18	-	55	-	4
25	8	M 6x10	-	55	-	1
25	8	M 6x12	-	55	-	1
25	8	M 6x 6	-	55	-	4
25	8	M 6x 8	-	55	-	4
25	8	M 6x10	-	55	-	4
25	8	M 6x15	-	55	-	4
25	8	M 6x18	-	55	-	4
25	8	M 6x20	-	55	-	4
25	8	M 6x23	-	55	-	4
25	8	M 6x33	-	55	-	4
25	8	M 8x18	-	55	-	4
25	8	M 8x20	-	55	-	4
25	8	M 8x28	-	55	-	4
25	8	M 8x60	-	55	-	4
25	10	M 4x10	-	55	-	1
25	10	M 6x 8	-	55	-	1
25	10	M 6x10	-	55	-	1
25	10	M 6x11	-	55	-	1
25	10	M 6x12	-	55	-	1
25	10	M 6x15	-	55	-	1
25	10	M 6x15	M 6x11	55	-	1
25	10	M 6x16	-	55	-	1
25	10	M 6x18	-	55	-	1
25	10	M 6x18	M 6x12	55	-	1
25	10	M 6x20	-	55	-	1
25	10	M 6x28	-	55	-	1
25	10	M 8x15	-	55	-	1
25	10	M 8x18	-	55	-	1
25	10	M 8x20	-	55	-	1
25	10	M 8x28	-	55	-	1
25	10	M 6x10	-	55	-	2
25	10	M 6x18	-	55	-	2
25	10	M 5x12	-	55	-	4
25	10	M 6x10	-	55	-	4
25	10	M 6x12	-	55	-	4
25	10	M 6x15	-	55	-	4

D ₁	H ₁	Thread 1 Závit 1 Винт 1 (Gxh)	Thread 2 Závit 2 Винт 2 (Gxh)	ShA Шор А	Shape Твар Модель	Type Тур Тип
25	10	M 6x18	-	55	-	4
25	10	M 6x20	-	55	-	4
25	10	M 6x25	-	55	-	4
25	10	M 6x28	-	55	-	4
25	10	M 8x15	-	55	-	4
25	10	M 8x20	-	55	-	4
25	10	M 8x48	-	55	-	4
25	10	M 6	-	55	-	5
25	10	M 8	-	55	-	5
25	12	M 6x18	-	55	-	1
25	12	M 6x15	-	55	-	2
25	12	M 6x 8	-	55	-	4
25	12	M 6x10	-	55	-	4
25	12	M 6x14	-	55	-	4
25	12	M 6x18	-	55	-	4
25	12	M 8x 8	-	55	-	4
25	12	M 8x15	-	55	-	4
25	12	M 8x20	-	55	-	4
25	12	M 6	-	55	-	5
25	13	M 6x10	-	55	-	1
25	13	M 6x15	-	55	-	1
25	13	M 6x18	-	55	-	1
25	13	M 6x10	-	55	-	2
25	13	M 6x 5	-	55	-	4
25	13	M 6x10	-	55	-	4
25	13	M 6x13	-	55	-	4
25	13	M 6x15	-	55	-	4
25	13	M 6x18	-	55	-	4
25	13	M 6x25	-	55	-	4
25	13	M 8x10	-	55	-	4
25	13	M 8x25	-	55	-	4
25	13	M 6	-	55	-	5
25	14	M 6x15	-	55	-	1
25	14	M 6x16	-	55	-	4
25	14	M 6x18	-	55	-	4
25	14	M 8x18	-	55	-	4
25	14	M 8x28	-	55	-	4
25	14	M 6	-	55	-	5
25	15	M 6x 8	-	55	-	1
25	15	M 6x10	-	55	-	1
25	15	M 6x10	M 6x 6	55	-	1
25	15	M 6x12	-	55	-	1
25	15	M 6x14	-	55	-	1
25	15	M 6x15	-	55	-	1
25	15	M 6x18	-	55	-	1
25	15	M 6x18	M 6x12	55	-	1
25	15	M 6x24	-	55	-	1
25	15	M 8x15	-	55	-	1
25	15	M 8x20	-	55	-	1
25	15	M 8x25	M 8x10	55	-	1

Note: Thread 2 = Thread 1 unless otherwise specified. / Poznámka: Závit 2 = Závit 1 pokud není uvedeno jinak. / Заметка: Винт 2 = Винт 1, если не установлено иначе.

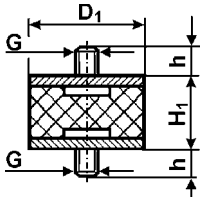


D ₁	H ₁	Thread 1 Závit 1 Винт 1 (Gxh)	Thread 2 Závit 2 Винт 2 (Gxh)	ShA Шор А	Shape Tvar Модель	Typ Тур Тип
25	15	M 6x 5	-	55	-	2
25	15	M 6x 6	-	55	-	2
25	15	M 6x 7	-	55	-	2
25	15	M 6x 8	-	55	-	2
25	15	M 6x10	-	55	-	2
25	15	M 6x12	-	55	-	2
25	15	M 6x15	-	55	-	2
25	15	M 6x18	-	55	-	2
25	15	M 6x20	-	55	-	2
25	15	M 6x23	-	55	-	2
25	15	M 8x12	-	55	-	2
25	15	M 8x15	-	55	-	2
25	15	M 8x18	-	55	-	2
25	15	M 8x23	-	55	-	2
25	15	M 6	-	55	-	3
25	15	M 5x20	-	55	-	4
25	15	M 6x 5	-	55	-	4
25	15	M 6x 6	-	55	-	4
25	15	M 6x 8	-	55	-	4
25	15	M 6x10	-	55	-	4
25	15	M 6x12	-	55	-	4
25	15	M 6x15	-	55	-	4
25	15	M 6x18	-	55	-	4
25	15	M 8x12	-	55	-	4
25	15	M 8x20	-	55	-	4
25	15	M 8x23	-	55	-	4
25	15	M 8x28	-	55	-	4
25	15	M 8x35	-	55	-	4
25	15	M 8x38	-	55	-	4
25	15	M10x28	-	55	-	4
25	15	M 5	-	55	-	5
25	15	M 6	-	55	-	5
25	15	M 8	-	55	-	5
25	17	M 6x 8	-	55	-	1
25	17	M 6x10	-	55	-	1
25	17	M 6x18	-	55	-	1
25	17	M 8x16	-	55	-	1
25	17	M 6x12	-	55	-	2
25	17	M 8x15	-	55	-	2
25	17	M 6	-	55	-	3
25	17	M 6x 8	-	55	-	4
25	17	M 6x10	-	55	-	4
25	17	M 6x12	-	55	-	4
25	17	M 6x15	-	55	-	4
25	17	M 6x18	-	55	-	4
25	17	M 6x20	-	55	-	4
25	17	M 8x18	-	55	-	4
25	17	M 8x23	-	55	-	4
25	17	M 6	-	55	-	5
25	17	M 8	-	55	-	5

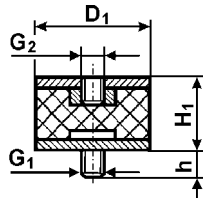
D ₁	H ₁	Thread 1 Závit 1 Винт 1 (Gxh)	Thread 2 Závit 2 Винт 2 (Gxh)	ShA Шор А	Shape Tvar Модель	Typ Тур Тип
25	18	M 6x12	-	55	-	1
25	18	M 8	-	55	-	3
25	18	M 6x18	-	55	-	4
25	18	M 6x25	-	55	-	4
25	18	M 8x15	-	55	-	4
25	18	M 6	-	55	-	5
25	19	M 8x20	-	55	-	1
25	19	M 8x20	-	55	-	4
25	19	M 8	-	55	-	5
25	20	M 5x10	-	55	-	1
25	20	M 5x18	-	55	-	1
25	20	M 6x10	-	55	-	1
25	20	M 6x12	-	55	-	1
25	20	M 6x12	M 6x10	55	-	1
25	20	M 6x15	-	55	-	1
25	20	M 6x18	-	55	-	1
25	20	M 6x18	M 6x10	55	-	1
25	20	M 6x20	-	55	-	1
25	20	M 6x20	M 6x10	55	-	1
25	20	M 6x28	-	55	-	1
25	20	M 6x28	M 6x12	55	-	1
25	20	M 6x12	-	40	45.12	1
25	20	M 6x12	-	50	45.12	1
25	20	M 6x12	-	60	45.12	1
25	20	M 8x10	-	55	-	1
25	20	M 8x12	-	55	-	1
25	20	M 8x13	-	55	-	1
25	20	M 8x15	-	55	-	1
25	20	M 8x18	-	55	-	1
25	20	M 8x20	-	55	-	1
25	20	M 8x23	-	55	-	1
25	20	M 8x31	-	55	-	1
25	20	M 8x31	M 8x13	55	-	1
25	20	M 8x33	-	55	-	1
25	20	M 8x33	M 8x13	55	-	1
25	20	M 5x 8	-	55	-	2
25	20	M 5x15	-	55	-	2
25	20	M 6x 6	-	55	-	2
25	20	M 6x 8	-	55	-	2
25	20	M 6x10	-	55	-	2
25	20	M 6x11	-	55	-	2
25	20	M 6x12	-	55	-	2
25	20	M 6x15	-	55	-	2
25	20	M 6x18	-	55	-	2
25	20	M 6x20	-	55	-	2
25	20	M 8x13	-	55	-	2
25	20	M 8x18	-	55	-	2
25	20	M 8x20	-	55	-	2
25	20	M10x38	-	55	-	2
25	20	M 6	-	55	-	3

Note: Thread 2 = Thread 1 unless otherwise specified. / Poznámka: Závit 2 = Závit 1 pokud není uvedeno jinak. / Заметка: Винт 2 = Винт 1, если не установлено иначе.

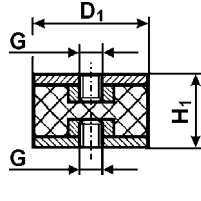
Type 1



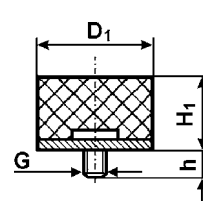
Type 2



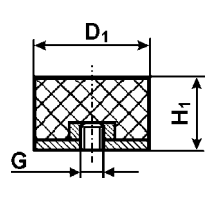
Type 3



Type 4



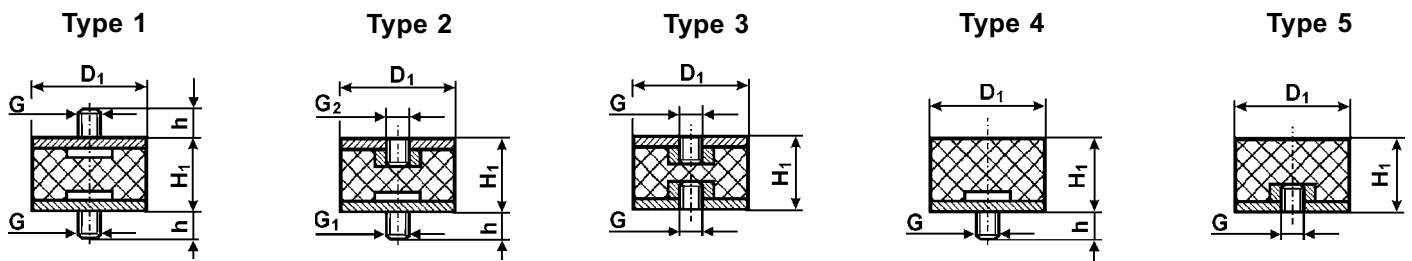
Type 5



D ₁	H ₁	Thread 1 Závit 1 Винт 1 (Gxh)	Thread 2 Závit 2 Винт 2 (Gxh)	ShA Шор A	Shape Tvar Модель	Typ Тип
25	20	M 8	-	55	-	3
25	20	M 6x 5	-	55	-	4
25	20	M 6x 6	-	55	-	4
25	20	M 6x 8	-	55	-	4
25	20	M 6x10	-	55	-	4
25	20	M 6x12	-	55	-	4
25	20	M 6x15	-	55	-	4
25	20	M 6x18	-	55	-	4
25	20	M 6x20	-	55	-	4
25	20	M 6x23	-	55	-	4
25	20	M 6x24	-	55	-	4
25	20	M 8x10	-	55	-	4
25	20	M 8x12	-	55	-	4
25	20	M 8x13	-	55	-	4
25	20	M 8x20	-	55	-	4
25	20	M 8x23	-	55	-	4
25	20	M10x25	-	55	-	4
25	20	M10x38	-	55	-	4
25	20	M12x28	-	55	-	4
25	20	M12x38	-	55	-	4
25	20	M12x48	-	55	-	4
25	20	M 5	-	55	-	5
25	20	M 6	-	55	-	5
25	20	M 8	-	55	-	5
25	22	M 5x 6	-	55	-	1
25	22	M 6x12	-	55	-	1
25	22	M 8x20	-	55	-	1
25	22	M 8x23	-	55	-	1
25	25	M 6x 8	-	55	-	1
25	25	M 6x10	-	55	-	1
25	25	M 6x12	-	55	-	1
25	25	M 6x15	-	55	-	1
25	25	M 6x18	-	55	-	1
25	25	M 8x15	-	55	-	1
25	25	M 8x18	-	55	-	1
25	25	M 8x20	-	55	-	1
25	25	M 8x23	-	55	-	1
25	25	M 6x 8	-	55	-	2
25	25	M 6x10	-	55	-	2
25	25	M 6x12	-	55	-	2
25	25	M 6x15	-	55	-	2
25	25	M 6x18	-	55	-	2
25	25	M 8x15	-	55	-	2
25	25	M 8x16	-	55	-	2
25	25	M 8x18	-	55	-	2
25	25	M 8x20	-	55	-	2
25	25	M 8x23	-	55	-	2
25	25	M 8x35	-	55	-	2
25	25	M 6	-	55	-	3
25	25	M 8	-	55	-	3

D ₁	H ₁	Thread 1 Závit 1 Винт 1 (Gxh)	Thread 2 Závit 2 Винт 2 (Gxh)	ShA Шор A	Shape Tvar Модель	Typ Тип
25	25	M 6x12	-	55	-	4
25	25	M 6x15	-	55	-	4
25	25	M 6x18	-	55	-	4
25	25	M 8x12	-	55	-	4
25	25	M 8x20	-	55	-	4
25	25	M 6	-	55	-	5
25	25	M 8	-	55	-	5
25	25	M10	-	55	-	5
25	27	M 8x22	-	55	-	1
25	27	M 8x22	-	55	-	2
25	27	M 6	-	55	-	3
25	27	M 8	-	55	-	3
25	27	M 6x18	-	55	-	4
25	27	M 8	-	55	-	5
25	28	M 6x15	M 6x 6	55	-	1
25	28	M 6x15	-	55	-	2
25	28	M 6x18	-	55	-	4
25	30	M 6x 8	-	55	-	1
25	30	M 6x10	-	55	-	1
25	30	M 6x12	-	55	-	1
25	30	M 6x15	-	55	-	1
25	30	M 6x18	-	55	-	1
25	30	M 6x18	M 6x12	55	-	1
25	30	M 8x15	-	55	-	1
25	30	M 8x18	-	55	-	1
25	30	M 8x20	-	55	-	1
25	30	M 8x23	-	55	-	1
25	30	M 8x25	-	55	-	1
25	30	M 5x15	-	55	-	2
25	30	M 6x 7	-	55	-	2
25	30	M 6x 8	-	55	-	2
25	30	M 6x10	-	55	-	2
25	30	M 6x12	-	55	-	2
25	30	M 6x15	-	55	-	2
25	30	M 6x18	-	55	-	2
25	30	M 6x23	-	55	-	2
25	30	M 6x28	-	55	-	2
25	30	M 8x15	-	55	-	2
25	30	M 8x20	-	55	-	2
25	30	M 8x23	-	55	-	2
25	30	M 8x35	-	55	-	2
25	30	M 6	-	55	-	3
25	30	M 8	-	55	-	3
25	30	M 6x 8	-	55	-	4
25	30	M 6x10	-	55	-	4
25	30	M 6x12	-	55	-	4
25	30	M 6x15	-	55	-	4
25	30	M 6x18	-	55	-	4
25	30	M 8x 8	-	55	-	4
25	30	M 8x15	-	55	-	4

Note: Thread 2 = Thread 1 unless otherwise specified. / Poznámka: Závit 2 = Závit 1 pokud není uvedeno jinak. / Заметка: Винт 2 = Винт 1, если не установлено иначе.

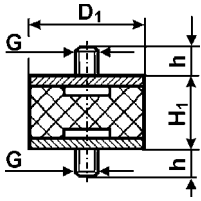


D ₁	H ₁	Thread 1 Závit 1 Винт 1 (Gxh)	Thread 2 Závit 2 Винт 2 (Gxh)	ShA Шор А	Shape Tvar Модель	Typ Тур Тип
25	30	M 8x20	-	55	-	4
25	30	M 6	-	55	-	5
25	30	M 8	-	55	-	5
25	40	M 6x12	-	55	-	1
25	40	M 6x 8	-	55	-	2
25	40	M 8	-	55	-	3
25	40	M 6x15	-	55	-	4
25	40	M 6x20	-	55	-	4
26	22	M 8x20	-	55	-	1
30	6	M 6x20	-	55	-	4
30	7	M 8x10	-	55	-	4
30	7	M10x15	-	55	-	4
30	8	M 6x18	-	55	-	4
30	8	M 8x20	-	55	-	4
30	8	M 8x28	-	55	-	4
30	10	M 5x10	-	55	-	1
30	10	M 6x12	-	55	-	1
30	10	M 8x20	-	55	-	1
30	10	M 8x28	-	55	-	1
30	10	M10x20	-	55	-	1
30	10	M10x20	M10x10	55	-	1
30	10	M 6x18	-	55	-	2
30	10	M 6x12	-	55	-	4
30	10	M 6x18	-	55	-	4
30	10	M 6x20	-	55	-	4
30	10	M 6x58	-	55	-	4
30	10	M 8x 5	-	55	-	4
30	10	M 8x10	-	55	-	4
30	10	M 8x12	-	55	-	4
30	10	M 8x13	-	55	-	4
30	10	M 8x15	-	55	-	4
30	10	M 8x20	-	55	-	4
30	10	M 8x25	-	55	-	4
30	10	M 8x33	-	55	-	4
30	10	M10x43	-	55	-	4
30	10	M10x45	-	55	-	4
30	10	M10x58	-	55	-	4
30	10	M12x58	-	55	-	4
30	10	M12x83	-	55	-	4
30	10	M16x33	-	55	-	4
30	10	M16x36	-	55	-	4
30	10	M 8	-	55	-	5
30	12	M 8x13	-	55	-	1
30	12	M 8x10	-	55	-	4
30	12	M 8x13	-	55	-	4
30	12	M 8x20	-	55	-	4
30	12	M 8x33	-	55	-	4
30	12	M 8	-	55	-	5
30	13	M10x52	-	55	-	4
30	15	M 6x18	-	55	-	1

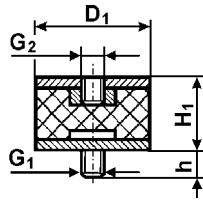
D ₁	H ₁	Thread 1 Závit 1 Винт 1 (Gxh)	Thread 2 Závit 2 Винт 2 (Gxh)	ShA Шор А	Shape Tvar Модель	Typ Тур Тип
30	15	M 8x 9	-	55	-	1
30	15	M 8x10	-	55	-	1
30	15	M 8x13	-	55	-	1
30	15	M 8x13	M 8x 9	55	-	1
30	15	M 8x13	M 8x10	55	-	1
30	15	M 8x15	-	55	-	1
30	15	M 8x15	M 8x10	55	-	1
30	15	M 8x17	-	55	-	1
30	15	M 8x18	-	55	-	1
30	15	M 8x19	-	55	-	1
30	15	M 8x20	-	55	-	1
30	15	M 8x21	-	55	-	1
30	15	M 8x23	-	55	-	1
30	15	M 8x23	M 8x15	55	-	1
30	15	M 8x25	-	55	-	1
30	15	M 8x28	-	55	-	1
30	15	M 8x33	-	55	-	1
30	15	M 8x50	-	55	-	1
30	15	M 8x50	M 8x15	55	-	1
30	15	M10x15	-	55	-	1
30	15	M10x18	-	55	-	1
30	15	M10x20	-	55	-	1
30	15	M10x23	-	55	-	1
30	15	M10x33	-	55	-	1
30	15	M 5x13	-	55	-	2
30	15	M 6x15	-	55	-	2
30	15	M 8x 6	-	55	-	2
30	15	M 8x10	-	55	-	2
30	15	M 8x12	-	55	-	2
30	15	M 8x13	-	55	-	2
30	15	M 8x15	-	55	-	2
30	15	M 8x18	-	55	-	2
30	15	M 8x20	-	55	-	2
30	15	M 8x23	-	55	-	2
30	15	M 8	-	55	-	3
30	15	M 8x 7	-	55	-	4
30	15	M 8x 8	-	55	-	4
30	15	M 8x10	-	55	-	4
30	15	M 8x12	-	55	-	4
30	15	M 8x13	-	55	-	4
30	15	M 8x15	-	55	-	4
30	15	M 8x20	-	55	-	4
30	15	M 8x23	-	55	-	4
30	15	M 8x25	-	55	-	4
30	15	M 8x28	-	55	-	4
30	15	M 8x33	-	55	-	4
30	15	M 8x35	-	55	-	4
30	15	M 8x38	-	55	-	4
30	15	M 8x58	-	55	-	4
30	15	M 8x68	-	55	-	4

Note: Thread 2 = Thread 1 unless otherwise specified. / Poznámka: Závit 2 = Závit 1 pokud není uvedeno jinak. / Заметка: Винт 2 = Винт 1, если не установлено иначе.

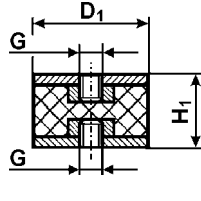
Type 1



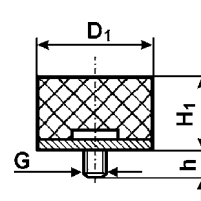
Type 2



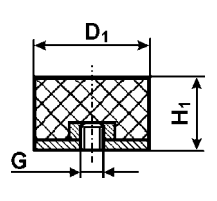
Type 3



Type 4



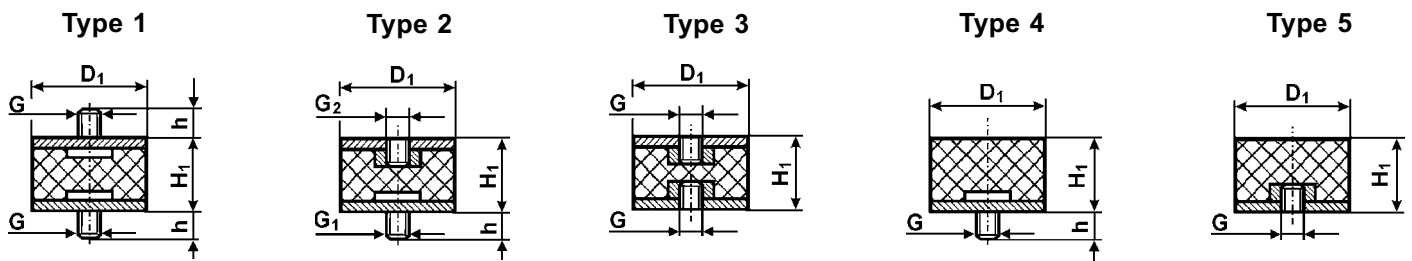
Type 5



D ₁	H ₁	Thread 1 Závit 1 Винт 1 (Gxh)	Thread 2 Závit 2 Винт 2 (Gxh)	ShA Шор А	Shape Tvar Модель	Typ Тур Тип
30	15	M10x20	-	55	-	4
30	15	M10x28	-	55	-	4
30	15	M10x68	-	55	-	4
30	15	M 4	-	55	-	5
30	15	M 6	-	55	-	5
30	15	M 8	-	55	-	5
30	16	M 8x23	-	55	-	4
30	16	M 8x28	-	55	-	4
30	17	M 8x13	-	55	-	1
30	17	M 8x25	-	55	-	1
30	17	M 6x18	-	55	-	4
30	17	M 8x10	-	55	-	4
30	17	M 8x13	-	55	-	4
30	17	M 8x15	-	55	-	4
30	17	M 8x20	-	55	-	4
30	17	M 8x23	-	55	-	4
30	17	M 8x27	-	55	-	4
30	17	M 8x28	-	55	-	4
30	17	M10x15	-	55	-	4
30	17	M 8	-	55	-	5
30	17	M10	-	55	-	5
30	18	M 8x23	-	55	-	1
30	18	M10x20	-	55	-	2
30	18	M 8x20	-	55	-	4
30	18	M 8x23	-	55	-	4
30	18	M 8x28	-	55	-	4
30	18	M 8x35	-	55	-	4
30	18	M10x10	-	55	-	4
30	18	M 8	-	55	-	5
30	18	M10	-	55	-	5
30	20	M 6x18	-	55	-	1
30	20	M 6x20	-	55	-	1
30	20	M 8x 8	-	55	-	1
30	20	M 8x10	-	55	-	1
30	20	M 8x12	-	55	-	1
30	20	M 8x12	M 6x18	55	-	1
30	20	M 8x13	-	55	-	1
30	20	M 8x15	-	55	-	1
30	20	M 8x15	M 8x 8	55	-	1
30	20	M 8x16	-	55	-	1
30	20	M 8x18	-	55	-	1
30	20	M 8x20	-	55	-	1
30	20	M 8x20	M 8x30	55	-	1
30	20	M 8x23	-	55	-	1
30	20	M 8x25	-	55	-	1
30	20	M 8x28	-	55	-	1
30	20	M 8x33	-	55	-	1
30	20	M10x10	-	55	-	1
30	20	M10x18	-	55	-	1
30	20	M10x28	-	55	-	1

D ₁	H ₁	Thread 1 Závit 1 Винт 1 (Gxh)	Thread 2 Závit 2 Винт 2 (Gxh)	ShA Шор А	Shape Tvar Модель	Typ Тур Тип
30	20	M 6x10	-	55	-	2
30	20	M 6x15	-	55	-	2
30	20	M 6x18	-	55	-	2
30	20	M 6x20	-	55	-	2
30	20	M 8x 8	-	55	-	2
30	20	M 8x 9	-	55	-	2
30	20	M 8x10	-	55	-	2
30	20	M 8x12	-	55	-	2
30	20	M 8x13	-	55	-	2
30	20	M 8x15	-	55	-	2
30	20	M 8x16	-	55	-	2
30	20	M 8x18	-	55	-	2
30	20	M 8x20	-	55	-	2
30	20	M 8x23	-	55	-	2
30	20	M 8x25	-	55	-	2
30	20	M 8x28	-	55	-	2
30	20	M 8x33	-	55	-	2
30	20	M10x15	-	55	-	2
30	20	M10x28	-	55	-	2
30	20	M 6	-	55	-	3
30	20	M 8	-	55	-	3
30	20	M10	-	55	-	3
30	20	M 5x15	-	55	-	4
30	20	M 6x15	-	55	-	4
30	20	M 8x 6	-	55	-	4
30	20	M 8x10	-	55	-	4
30	20	M 8x13	-	55	-	4
30	20	M 8x15	-	55	-	4
30	20	M 8x18	-	55	-	4
30	20	M 8x20	-	55	-	4
30	20	M 8x23	-	55	-	4
30	20	M 8x27	-	55	-	4
30	20	M 8x28	-	55	-	4
30	20	M 8x33	-	55	-	4
30	20	M 8x40	-	55	-	4
30	20	M 8x48	-	55	-	4
30	20	M10x10	-	55	-	4
30	20	M10x12	-	55	-	4
30	20	M10x15	-	55	-	4
30	20	M10x20	-	55	-	4
30	20	M10x28	-	55	-	4
30	20	M12x37	-	55	-	4
30	20	M16x48	-	55	-	4
30	20	M 6	-	55	-	5
30	20	M 8	-	55	-	5
30	20	M10	-	55	-	5
30	22	M 8x13	-	55	-	1
30	22	M 8x20	-	55	-	1
30	22	M 8x20	M 8x12	55	-	1
30	22	M 8x31	-	55	-	1

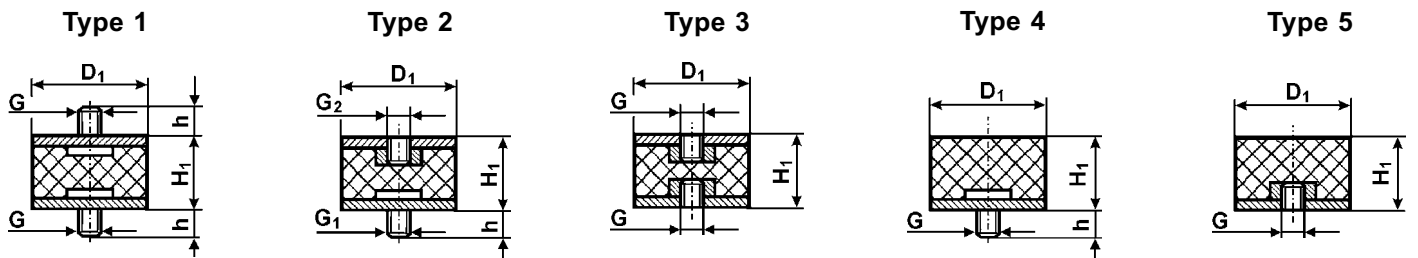
Note: Thread 2 = Thread 1 unless otherwise specified. / Poznámka: Závit 2 = Závit 1 pokud není uvedeno jinak. / Заметка: Винт 2 = Винт 1, если не установлено иначе.



D ₁	H ₁	Thread 1 Závit 1 Винт 1 (Gxh)	Thread 2 Závit 2 Винт 2 (Gxh)	ShA Шор А	Shape Tvar Модель	Typ Тур Тип
30	22	M 8x31	M 8x13	55	-	1
30	22	M 8x33	-	55	-	1
30	22	M 8x33	M 8x13	55	-	1
30	22	M 8x13	-	55	-	2
30	22	M 8x20	-	55	-	2
30	22	M 8x25	-	55	-	2
30	22	M 8	-	55	-	3
30	22	M 8x15	-	55	-	4
30	25	M 6x12	-	55	-	1
30	25	M 6x18	-	55	-	1
30	25	M 8x12	-	55	-	1
30	25	M 8x15	-	55	-	1
30	25	M 8x18	-	55	-	1
30	25	M 8x20	-	55	-	1
30	25	M 8x20	M 8x36	55	-	1
30	25	M 8x22	-	55	-	1
30	25	M 8x23	-	55	-	1
30	25	M 8x25	-	55	-	1
30	25	M 8x28	-	55	-	1
30	25	M 8x36	-	55	-	1
30	25	M 8x36	M 8x15	55	-	1
30	25	M10x12	-	55	-	1
30	25	M10x20	-	55	-	1
30	25	M 6x15	-	55	-	2
30	25	M 6x18	-	55	-	2
30	25	M 8x 8	-	55	-	2
30	25	M 8x10	-	55	-	2
30	25	M 8x12	-	55	-	2
30	25	M 8x15	-	55	-	2
30	25	M 8x20	-	55	-	2
30	25	M 8x23	-	55	-	2
30	25	M 8x25	-	55	-	2
30	25	M 8	-	55	-	3
30	25	M 6x 8	-	55	-	4
30	25	M 6x15	-	55	-	4
30	25	M 6x18	-	55	-	4
30	25	M 8x10	-	55	-	4
30	25	M 8x12	-	55	-	4
30	25	M 8x15	-	55	-	4
30	25	M 8x20	-	55	-	4
30	25	M 8x23	-	55	-	4
30	25	M 8x25	-	55	-	4
30	25	M 6	-	55	-	5
30	25	M 8	-	55	-	5
30	25	M10	-	55	-	5
30	27	M 8x13	-	55	-	4
30	27	M 8x20	-	55	-	4
30	28	M 8x20	-	55	-	4
30	30	M 6x18	-	55	-	1
30	30	M 6x20	-	55	-	1

D ₁	H ₁	Thread 1 Závit 1 Винт 1 (Gxh)	Thread 2 Závit 2 Винт 2 (Gxh)	ShA Шор А	Shape Tvar Модель	Typ Тур Тип
30	30	M 8x13	-	55	-	1
30	30	M 8x15	-	55	-	1
30	30	M 8x15	M 8x10	55	-	1
30	30	M 8x16	-	55	-	1
30	30	M 8x17	-	55	-	1
30	30	M 8x18	-	55	-	1
30	30	M 8x20	-	55	-	1
30	30	M 8x20	M 8x36	55	-	1
30	30	M 8x23	-	55	-	1
30	30	M 8x23	M 8x15	55	-	1
30	30	M 8x25	-	55	-	1
30	30	M 8x28	-	55	-	1
30	30	M 8x31	-	55	-	1
30	30	M 8x31	M 8x13	55	-	1
30	30	M 8x33	-	55	-	1
30	30	M 8x36	-	55	-	1
30	30	M10x28	-	55	-	1
30	30	M 6x10	-	55	-	2
30	30	M 6x18	-	55	-	2
30	30	M 6x20	-	55	-	2
30	30	M 6x23	-	55	-	2
30	30	M 8x 8	-	55	-	2
30	30	M 8x 9	-	55	-	2
30	30	M 8x10	-	55	-	2
30	30	M 8x12	-	55	-	2
30	30	M 8x13	-	55	-	2
30	30	M 8x15	-	55	-	2
30	30	M 8x18	-	55	-	2
30	30	M 8x20	-	55	-	2
30	30	M 8x22	-	55	-	2
30	30	M 8x23	-	55	-	2
30	30	M 8x33	-	55	-	2
30	30	M 8x36	-	55	-	2
30	30	M 8x38	-	55	-	2
30	30	M 8	-	50	80.12	3
30	30	M 8	-	55	-	3
30	30	M10	-	55	-	3
30	30	M 6x15	-	55	-	4
30	30	M 6x18	-	55	-	4
30	30	M 6x20	-	55	-	4
30	30	M 8x 8	-	55	-	4
30	30	M 8x13	-	55	-	4
30	30	M 8x18	-	55	-	4
30	30	M 8x20	-	55	-	4
30	30	M 8x23	-	55	-	4
30	30	M 8x25	-	55	-	4
30	30	M 8x27	-	55	-	4
30	30	M 8x28	-	55	-	4
30	30	M 8x33	-	55	-	4
30	30	M 8x36	-	55	-	4

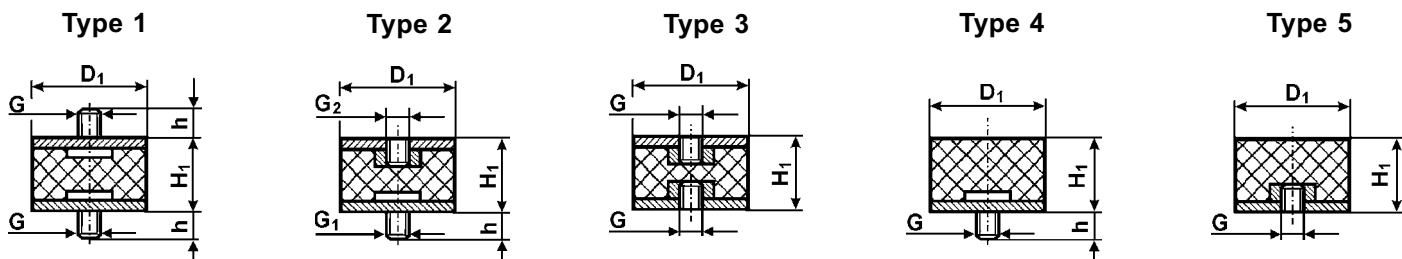
Note: Thread 2 = Thread 1 unless otherwise specified. / Poznámka: Závit 2 = Závit 1 pokud není uvedeno jinak. / Заметка: Винт 2 = Винт 1, если не установлено иначе.



D ₁	H ₁	Thread 1 Závit 1 Винт 1 (Gxh)	Thread 2 Závit 2 Винт 2 (Gxh)	ShA Шор А	Shape Твар Модель	Туре Тур Тип
30	30	M 8x40	-	55	-	4
30	30	M10x20	-	55	-	4
30	30	M10x25	-	55	-	4
30	30	M10x28	-	55	-	4
30	30	M10x33	-	55	-	4
30	30	M 6	-	55	-	5
30	30	M 8	-	55	-	5
30	35	M 8x15	-	55	-	1
30	35	M 8x20	-	55	-	1
30	35	M 8x23	-	55	-	1
30	35	M 8x13	-	55	-	2
30	35	M 8x20	-	55	-	2
30	35	M 8x23	-	55	-	2
30	35	M 8	-	55	-	3
30	35	M 8x12	-	55	-	4
30	35	M 8x13	-	55	-	4
30	35	M 8x15	-	55	-	4
30	35	M 8x18	-	55	-	4
30	35	M 8x20	-	55	-	4
30	35	M 8x46	-	55	-	4
30	35	M 8	-	55	-	5
30	36	M 8	-	55	-	5
30	40	M 6x23	-	55	-	1
30	40	M 8x20	-	55	-	1
30	40	M 8x23	-	55	-	1
30	40	M 8x23	M 8x15	55	-	1
30	40	M 8x28	-	55	-	1
30	40	M 8x28	M 8x15	55	-	1
30	40	M 8x33	-	55	-	1
30	40	M10x28	-	55	-	1
30	40	M 6x20	-	55	-	2
30	40	M 8x10	-	55	-	2
30	40	M 8x13	-	55	-	2
30	40	M 8x15	-	55	-	2
30	40	M 8x20	-	55	-	2
30	40	M 8x22	-	55	-	2
30	40	M 8x23	-	55	-	2
30	40	M 8x25	-	55	-	2
30	40	M 8x28	-	55	-	2
30	40	M10x28	-	55	-	2
30	40	M 6	-	55	-	3
30	40	M 8	-	60	30.12	3
30	40	M 8	-	55	-	3
30	40	M 8x15	-	55	-	4
30	40	M 8x20	-	55	-	4
30	40	M 8x23	-	55	-	4
30	40	M16x48	-	55	-	4
30	40	M 8	-	55	-	5
30	40	M10	-	55	-	5
30	42	M 8x21	-	55	-	1

D ₁	H ₁	Thread 1 Závit 1 Винт 1 (Gxh)	Thread 2 Závit 2 Винт 2 (Gxh)	ShA Шор А	Shape Твар Модель	Туре Тур Тип
30	45	M 8x23	-	55	-	1
30	45	M 8x28	-	55	-	1
30	45	M 6x15	-	55	-	4
30	45	M 8x15	-	55	-	4
30	45	M 8x20	-	55	-	4
30	45	M 8x23	-	55	-	4
30	50	M 8x20	-	55	-	2
35	20	M12x30	-	55	-	1
35	25	M 8x15	-	55	-	1
35	25	M 8x16	-	40	116.12	1
35	25	M 8x16	-	50	116.12	1
35	25	M 8x16	-	60	116.12	1
35	25	M 8x16	-	55	-	1
35	25	M 8x20	-	55	-	1
35	25	M 8x23	-	55	-	1
35	25	M 8x25	-	55	-	1
35	25	M10x20	-	55	-	1
35	30	M 8x36	-	55	-	1
35	30	M 8x36	M 8x20	55	-	1
35	30	M10x28	M10x10	55	-	1
35	30	M 6x18	-	55	-	2
35	30	M10x28	-	55	-	4
35	45	M 8x20	-	55	-	1
35	45	M 8x28	-	55	-	1
35	45	M 8x20	-	55	-	4
40	10	M 8x23	-	55	-	1
40	10	M 8x40	-	55	-	1
40	10	M 6x 8	-	55	-	4
40	10	M 6x10	-	55	-	4
40	10	M 8x13	-	55	-	4
40	10	M 8x15	-	55	-	4
40	10	M 8x20	-	55	-	4
40	10	M 8x23	-	55	-	4
40	10	M 8x25	-	55	-	4
40	10	M 8x28	-	55	-	4
40	10	M 8x40	-	55	-	4
40	10	M10x15	-	55	-	4
40	10	M10x28	-	55	-	4
40	10	M10	-	55	-	5
40	15	M 6x10	-	55	-	1
40	15	M 6x18	-	55	-	1
40	15	M 8x12	-	55	-	1
40	15	M 8x13	-	55	-	1
40	15	M 8x15	-	55	-	1
40	15	M 8x20	-	55	-	1
40	15	M 8x23	-	55	-	1
40	15	M 8x28	-	55	-	1
40	15	M 8x30	-	55	-	1
40	15	M10x28	-	55	-	1
40	15	M10x33	-	55	-	1

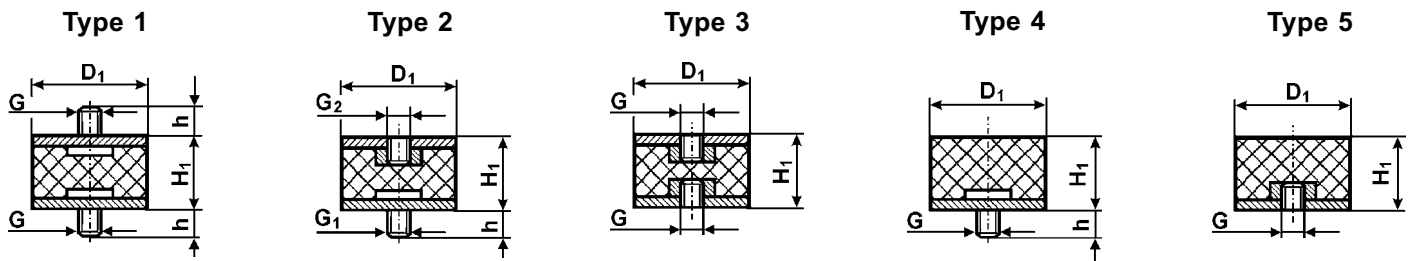
Note: Thread 2 = Thread 1 unless otherwise specified. / **Poznámka:** Závit 2 = Závit 1 pokud není uvedeno jinak. / **Заметка:** Винт 2 = Винт 1, если не установлено иначе.



D ₁	H ₁	Thread 1 Závit 1 Винт 1 (Gxh)	Thread 2 Závit 2 Винт 2 (Gxh)	ShA Шор А	Shape Tvar Модель	Typ Тур Тип
40	15	M12x30	-	55	-	1
40	15	M 8x20	-	55	-	2
40	15	M 8x23	-	55	-	2
40	15	M 8	-	55	-	3
40	15	M 6x 8	-	55	-	4
40	15	M 8x15	-	55	-	4
40	15	M 8x20	-	55	-	4
40	15	M 8x23	-	55	-	4
40	15	M 8x25	-	55	-	4
40	15	M 8x28	-	55	-	4
40	15	M10x20	-	55	-	4
40	15	M10x25	-	55	-	4
40	15	M10x28	-	55	-	4
40	15	M 6	-	55	-	5
40	15	M 8	-	55	-	5
40	15	M10	-	55	-	5
40	17	M 8x23	-	55	-	2
40	20	M 8x12	-	55	-	1
40	20	M 8x15	-	55	-	1
40	20	M 8x15	-	70	102.12	1
40	20	M 8x20	-	55	-	1
40	20	M 8x23	-	55	-	1
40	20	M 8x23	M 8x10	55	-	1
40	20	M 8x28	-	55	-	1
40	20	M 8x33	-	55	-	1
40	20	M10x15	-	55	-	1
40	20	M10x18	-	55	-	1
40	20	M10x20	-	55	-	1
40	20	M10x23	-	55	-	1
40	20	M10x25	-	55	-	1
40	20	M10x28	-	55	-	1
40	20	M10x30	-	55	-	1
40	20	M10x33	-	55	-	1
40	20	M10x36	-	55	-	1
40	20	M10x38	-	55	-	1
40	20	M10x38	M10x20	55	-	1
40	20	M 6x18	-	55	-	2
40	20	M 8x12	-	55	-	2
40	20	M 8x13	-	55	-	2
40	20	M 8x15	-	55	-	2
40	20	M 8x18	-	55	-	2
40	20	M 8x20	-	55	-	2
40	20	M 8x23	-	55	-	2
40	20	M 8x23	M 8x10	55	-	2
40	20	M 8x25	-	55	-	2
40	20	M10x13	-	55	-	2
40	20	M10x15	-	55	-	2
40	20	M10x20	-	55	-	2
40	20	M10x25	-	55	-	2
40	20	M10x28	-	55	-	2

D ₁	H ₁	Thread 1 Závit 1 Винт 1 (Gxh)	Thread 2 Závit 2 Винт 2 (Gxh)	ShA Шор А	Shape Tvar Модель	Typ Тур Тип
40	20	M12x28	-	55	-	2
40	20	M 8	-	55	-	3
40	20	M 8x12	-	55	-	4
40	20	M 8x15	-	55	-	4
40	20	M 8x18	-	55	-	4
40	20	M 8x20	-	55	-	4
40	20	M 8x23	-	55	-	4
40	20	M 8x30	-	55	-	4
40	20	M 8x36	-	55	-	4
40	20	M10x10	-	55	-	4
40	20	M10x15	-	55	-	4
40	20	M10x18	-	55	-	4
40	20	M10x20	-	55	-	4
40	20	M10x23	-	55	-	4
40	20	M10x25	-	55	-	4
40	20	M10x28	-	55	-	4
40	20	M10x33	-	55	-	4
40	20	M12x33	-	55	-	4
40	20	M 8	-	55	-	5
40	20	M10	-	55	-	5
40	20	M16	-	55	-	5
40	20	M16x12	-	55	-	5
40	25	M 6x20	-	55	-	1
40	25	M 8x10	-	55	-	1
40	25	M 8x15	-	55	-	1
40	25	M 8x18	-	55	-	1
40	25	M 8x20	-	55	-	1
40	25	M 8x23	-	55	-	1
40	25	M 8x28	-	55	-	1
40	25	M10x25	-	55	-	1
40	25	M10x28	-	55	-	1
40	25	M10x33	-	55	-	1
40	25	M 6x23	-	55	-	2
40	25	M 8x12	-	55	-	2
40	25	M 8x15	-	55	-	2
40	25	M 8x18	-	55	-	2
40	25	M 8x20	-	55	-	2
40	25	M 8x23	-	55	-	2
40	25	M10x15	-	55	-	2
40	25	M10x20	-	55	-	2
40	25	M10x23	-	55	-	2
40	25	M10x28	-	55	-	2
40	25	M 8	-	55	-	3
40	25	M 8x15	-	55	-	4
40	25	M 8x20	-	55	-	4
40	25	M 8x23	-	55	-	4
40	25	M 8x28	-	55	-	4
40	25	M10x15	-	55	-	4
40	25	M10x25	-	55	-	4
40	25	M10x28	-	55	-	4

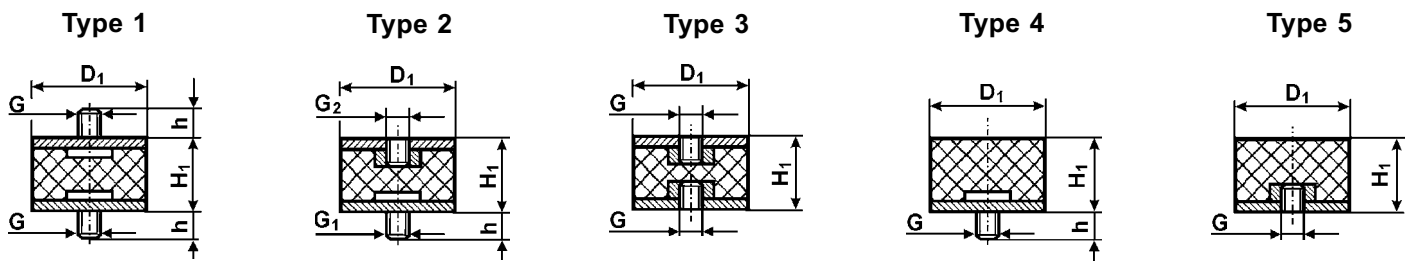
Note: Thread 2 = Thread 1 unless otherwise specified. / Poznámka: Závit 2 = Závit 1 pokud není uvedeno jinak. / Заметка: Винт 2 = Винт 1, если не установлено иначе.



D ₁	H ₁	Thread 1 Závit 1 Винт 1 (Gxh)	Thread 2 Závit 2 Винт 2 (Gxh)	ShA Шор A	Shape Tvar Модель	Typ Тип
40	25	M10x33	-	55	-	4
40	25	M12x20	-	55	-	4
40	25	M12x30	-	55	-	4
40	25	M 8	-	55	-	5
40	25	M10	-	55	-	5
40	27	M 8x23	-	55	-	1
40	27	M 8x20	-	55	-	4
40	27	M 8	-	55	-	5
40	27	M10	-	55	-	5
40	28	M 8x23	-	55	-	1
40	28	M10x18	-	55	-	1
40	28	M10x23	-	55	-	1
40	28	M10x24	-	60	128.12	1
40	28	M10x25	-	55	-	1
40	28	M10x28	-	55	-	1
40	28	M10	-	55	-	3
40	28	M 8x 8	-	55	-	4
40	28	M 8x 9	-	55	-	4
40	28	M 8x20	-	55	-	4
40	28	M 8x23	-	55	-	4
40	28	M 8x25	-	55	-	4
40	28	M 8x28	-	55	-	4
40	28	M10x25	-	55	-	4
40	28	M10x28	-	55	-	4
40	28	M 8	-	55	-	5
40	28	M10	-	55	-	5
40	30	M 6x15	-	55	-	1
40	30	M 6x18	-	55	-	1
40	30	M 6x20	-	55	-	1
40	30	M 8x 8	-	55	-	1
40	30	M 8x 9	-	55	-	1
40	30	M 8x12	-	55	-	1
40	30	M 8x14	-	55	-	1
40	30	M 8x15	-	55	-	1
40	30	M 8x16	-	55	-	1
40	30	M 8x18	-	55	-	1
40	30	M 8x20	-	55	-	1
40	30	M 8x23	-	55	-	1
40	30	M 8x23	M 8x36	55	-	1
40	30	M 8x28	-	55	-	1
40	30	M 8x33	-	55	-	1
40	30	M 8x36	-	55	-	1
40	30	M 8x40	-	55	-	1
40	30	M10x15	-	55	-	1
40	30	M10x18	-	55	-	1
40	30	M10x20	-	55	-	1
40	30	M10x23	-	55	-	1
40	30	M10x23	M10x12	55	-	1
40	30	M10x25	-	55	-	1
40	30	M10x28	-	55	-	1

D ₁	H ₁	Thread 1 Závit 1 Винт 1 (Gxh)	Thread 2 Závit 2 Винт 2 (Gxh)	ShA Шор A	Shape Tvar Модель	Typ Тип
40	30	M10x33	-	55	-	1
40	30	M10x38	-	55	-	1
40	30	M 8x12	-	55	-	2
40	30	M 8x13	-	55	-	2
40	30	M 8x15	-	55	-	2
40	30	M 8x18	-	55	-	2
40	30	M 8x20	-	55	-	2
40	30	M 8x23	-	55	-	2
40	30	M 8x25	-	55	-	2
40	30	M 8x28	-	55	-	2
40	30	M 8x36	-	55	-	2
40	30	M10x13	-	55	-	2
40	30	M10x15	-	55	-	2
40	30	M10x20	-	55	-	2
40	30	M10x25	-	55	-	2
40	30	M10x28	-	55	-	2
40	30	M12x28	-	55	-	2
40	30	M 5	-	55	-	3
40	30	M 8	-	55	-	3
40	30	M10	-	55	-	3
40	30	M 6x15	-	55	-	4
40	30	M 8x10	-	55	-	4
40	30	M 8x15	-	55	-	4
40	30	M 8x20	-	55	-	4
40	30	M 8x23	-	55	-	4
40	30	M 8x25	-	55	-	4
40	30	M 8x28	-	55	-	4
40	30	M10x10	-	55	-	4
40	30	M10x20	-	55	-	4
40	30	M10x23	-	55	-	4
40	30	M10x25	-	55	-	4
40	30	M10x28	-	55	-	4
40	30	M10x33	-	55	-	4
40	30	M12x28	-	55	-	4
40	30	M 6	-	55	-	5
40	30	M 8	-	55	-	5
40	30	M10	-	55	-	5
40	30	M12	-	55	-	5
40	34	M12x28	-	55	-	4
40	35	M 8x23	-	55	-	1
40	35	M 8x25	-	55	-	1
40	35	M10x20	-	55	-	1
40	35	M10x25	-	55	-	1
40	35	M10x28	-	55	-	1
40	35	M 8x15	-	55	-	2
40	35	M 8x20	-	55	-	2
40	35	M 8x23	-	55	-	2
40	35	M10x23	-	55	-	2
40	35	M10x25	-	55	-	2
40	35	M10x28	-	55	-	2

Note: Thread 2 = Thread 1 unless otherwise specified. / **Poznámka:** Závit 2 = Závit 1 pokud není uvedeno jinak. / **Заметка:** Винт 2 = Винт 1, если не установлено иначе.

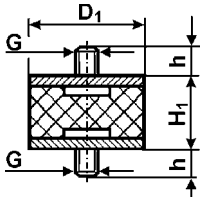


D ₁	H ₁	Thread 1 Závit 1 Винт 1 (Gxh)	Thread 2 Závit 2 Винт 2 (Gxh)	ShA Шор А	Shape Tvar Модель	Typ Тур Тип
40	35	M 8	-	55	-	3
40	35	M 8x15	-	55	-	4
40	35	M 8x20	-	55	-	4
40	35	M 8x23	-	55	-	4
40	35	M 8x28	-	55	-	4
40	35	M10x25	-	55	-	4
40	35	M12x10	-	55	-	4
40	35	M 8	-	55	-	5
40	38	M 8x23	-	55	-	1
40	38	M 8x15	-	55	-	4
40	38	M 8x18	-	55	-	4
40	38	M 8x20	-	55	-	4
40	38	M 8x23	-	55	-	4
40	38	M10x12	-	55	-	4
40	40	M 8x15	-	55	-	1
40	40	M 8x16	-	55	-	1
40	40	M 8x18	-	55	-	1
40	40	M 8x20	-	55	-	1
40	40	M 8x23	-	55	-	1
40	40	M 8x25	-	55	-	1
40	40	M 8x28	-	55	-	1
40	40	M 8x33	-	55	-	1
40	40	M 8x40	-	55	-	1
40	40	M10x15	-	55	-	1
40	40	M10x20	-	55	-	1
40	40	M10x23	-	55	-	1
40	40	M10x28	-	55	-	1
40	40	M10x33	-	55	-	1
40	40	M12x28	-	55	-	1
40	40	M 8x10	-	55	-	2
40	40	M 8x12	-	55	-	2
40	40	M 8x15	-	55	-	2
40	40	M 8x20	-	55	-	2
40	40	M 8x23	-	55	-	2
40	40	M 8x28	-	55	-	2
40	40	M10x18	-	55	-	2
40	40	M10x20	-	55	-	2
40	40	M10x23	-	55	-	2
40	40	M10x28	-	55	-	2
40	40	M10x33	-	55	-	2
40	40	M12x28	-	55	-	2
40	40	M 5	-	55	-	3
40	40	M 6	-	55	-	3
40	40	M 8	-	55	-	3
40	40	M10	-	55	-	3
40	40	M 8x 8	-	55	-	4
40	40	M 8x12	-	55	-	4
40	40	M 8x15	-	55	-	4
40	40	M 8x20	-	55	-	4
40	40	M 8x23	-	55	-	4

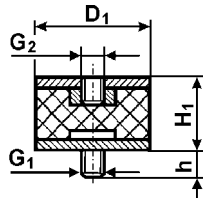
D ₁	H ₁	Thread 1 Závit 1 Винт 1 (Gxh)	Thread 2 Závit 2 Винт 2 (Gxh)	ShA Шор А	Shape Tvar Модель	Typ Тур Тип
40	40	M 8x25	-	55	-	4
40	40	M 8x28	-	55	-	4
40	40	M10x15	-	55	-	4
40	40	M10x20	-	55	-	4
40	40	M10x25	-	55	-	4
40	40	M10x28	-	55	-	4
40	40	M 8	-	55	-	5
40	40	M10	-	55	-	5
40	45	M 8x23	-	55	-	1
40	45	M 8x28	-	55	-	1
40	45	M10x15	-	55	-	1
40	45	M10x28	-	55	-	1
40	45	M10x12	-	55	-	2
40	45	M10x28	-	55	-	2
40	45	M 8x12	-	55	-	4
40	45	M10x25	-	55	-	4
40	45	M12x26	-	55	-	4
40	45	M 8	-	55	-	5
40	50	M10x20	-	55	-	1
40	50	M10x23	-	55	-	1
40	50	M10x28	-	55	-	1
40	50	M 8	-	55	-	3
40	50	M 8x23	-	55	-	4
40	50	M 8	-	55	-	5
40	55	M 8	-	55	-	3
40	60	M 8x15	-	55	-	1
40	60	M 8x23	-	55	-	1
40	60	M10x20	-	55	-	1
40	60	M12x20	-	55	-	1
40	60	M12x30	-	55	-	1
40	60	M 8x20	-	55	-	2
40	60	M10x20	-	55	-	2
40	60	M10x28	-	55	-	2
40	60	M 8	-	55	-	3
43	45	M 8	-	55	-	3
45	50	M 8x23	-	55	-	1
45	50	M 8x23	-	55	-	2
50	7	M 6x 8	-	55	-	4
50	9	M10x28	-	55	-	4
50	10	M10x10	-	55	-	4
50	10	M10x15	-	55	-	4
50	10	M10x18	-	55	-	4
50	10	M10x20	-	55	-	4
50	10	M10x28	-	55	-	4
50	12	M 6x12	-	55	-	4
50	12	M 6x16	-	55	-	4
50	12	M 8x12	-	55	-	4
50	12	M10x28	-	55	-	4
50	12	M10x38	-	55	-	4
50	12	M10	-	55	-	5

Note: Thread 2 = Thread 1 unless otherwise specified. / Poznámka: Závit 2 = Závit 1 pokud není uvedeno jinak. / Заметка: Винт 2 = Винт 1, если не установлено иначе.

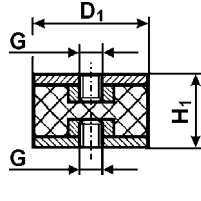
Type 1



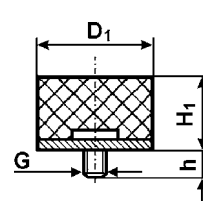
Type 2



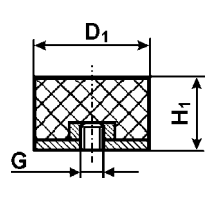
Type 3



Type 4



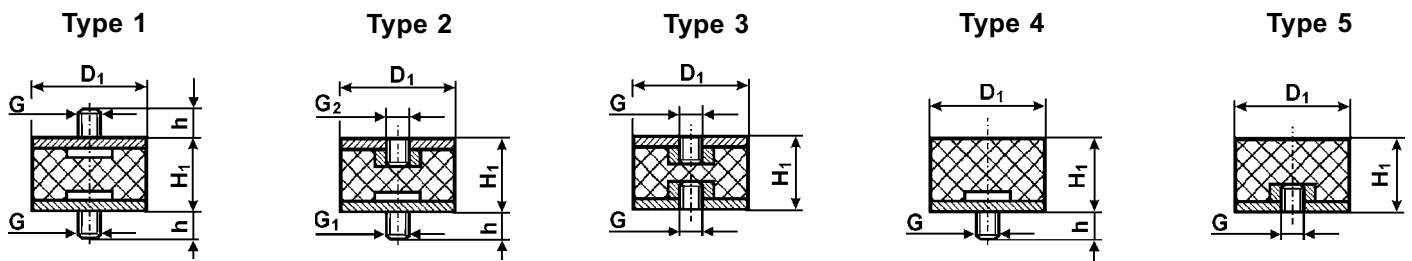
Type 5



D ₁	H ₁	Thread 1 Závit 1 Винт 1 (Gxh)	Thread 2 Závit 2 Винт 2 (Gxh)	ShA Шор А	Shape Твар Модель	Type Тип
50	15	M10x20	-	55	-	1
50	15	M 8x 8	-	55	-	4
50	15	M 8x15	-	55	-	4
50	15	M10x10	-	55	-	4
50	15	M10x15	-	55	-	4
50	15	M10x23	-	55	-	4
50	15	M10x28	-	55	-	4
50	15	M10x38	-	55	-	4
50	15	M10x50	-	55	-	4
50	15	M12x45	-	55	-	4
50	15	M 6	-	55	-	5
50	17	M10x28	-	55	-	1
50	17	M 8x28	-	55	-	4
50	17	M10x10	-	55	-	4
50	17	M10x25	-	55	-	4
50	17	M10x28	-	55	-	4
50	17	M10x33	-	55	-	4
50	17	M12x28	-	55	-	4
50	17	M10	-	55	-	5
50	18	M10x25	-	55	-	4
50	20	M 6x15	-	55	-	1
50	20	M 8x15	-	55	-	1
50	20	M 8x20	-	55	-	1
50	20	M 8x38	-	55	-	1
50	20	M10x12	-	55	-	1
50	20	M10x15	-	55	-	1
50	20	M10x18	-	55	-	1
50	20	M10x20	-	55	-	1
50	20	M10x20	M10x10	55	-	1
50	20	M10x28	-	55	-	1
50	20	M10x28	M10x12	55	-	1
50	20	M10x28	M10x15	55	-	1
50	20	M10x28	M10x20	55	-	1
50	20	M10x28	M10x38	55	-	1
50	20	M10x33	-	55	-	1
50	20	M10x37	M10x27	55	-	1
50	20	M10x38	-	55	-	1
50	20	M10x41	-	55	-	1
50	20	M10x45	-	55	-	1
50	20	M12x25	-	55	-	1
50	20	M12x28	-	55	-	1
50	20	M12x37	-	55	-	1
50	20	M 8x15	-	55	-	2
50	20	M 8x23	-	55	-	2
50	20	M 8x28	-	55	-	2
50	20	M10x 5	-	55	-	2
50	20	M10x10	-	55	-	2
50	20	M10x12	-	55	-	2
50	20	M10x13	-	55	-	2
50	20	M10x15	-	55	-	2

D ₁	H ₁	Thread 1 Závit 1 Винт 1 (Gxh)	Thread 2 Závit 2 Винт 2 (Gxh)	ShA Шор А	Shape Твар Модель	Type Тип
50	20	M10x16	-	55	-	2
50	20	M10x20	-	55	-	2
50	20	M10x25	-	55	-	2
50	20	M10x28	-	55	-	2
50	20	M10x30	-	55	-	2
50	20	M10x33	-	55	-	2
50	20	M10x38	-	55	-	2
50	20	M10x43	-	55	-	2
50	20	M12x20	-	55	-	2
50	20	M12x28	-	55	-	2
50	20	M12x33	-	55	-	2
50	20	M12x43	-	55	-	2
50	20	M10	-	55	-	3
50	20	M 6x16	-	55	-	4
50	20	M 8x28	-	55	-	4
50	20	M10x14	-	55	-	4
50	20	M10x15	-	55	-	4
50	20	M10x18	-	55	-	4
50	20	M10x20	-	55	-	4
50	20	M10x25	-	55	-	4
50	20	M10x28	-	55	-	4
50	20	M10x33	-	55	-	4
50	20	M10x38	-	55	-	4
50	20	M12x28	-	55	-	4
50	20	M12x33	-	55	-	4
50	20	M12x38	-	55	-	4
50	20	M12x40	-	55	-	4
50	20	M12x48	-	55	-	4
50	20	M 8	-	55	-	5
50	20	M10	-	55	-	5
50	21	M10x10	-	55	-	2
50	21	M10x20	-	55	-	2
50	21	M10x30	-	55	-	2
50	21	M10x20	-	55	-	4
50	21	M10x48	-	55	-	4
50	21	M10	-	55	-	5
50	25	M 8x23	-	55	-	1
50	25	M10x20	-	55	-	1
50	25	M10x25	-	55	-	1
50	25	M10x27	-	55	-	1
50	25	M10x28	-	55	-	1
50	25	M10x33	-	55	-	1
50	25	M12x25	-	55	-	1
50	25	M12x37	-	55	-	1
50	25	M10x13	-	55	-	2
50	25	M10x20	-	55	-	2
50	25	M10x28	-	55	-	2
50	25	M 8	-	55	-	3
50	25	M10	-	55	-	3
50	25	M10x15	-	55	-	4

Note: Thread 2 = Thread 1 unless otherwise specified. / **Poznámka:** Závit 2 = Závit 1 pokud není uvedeno jinak. / **Заметка:** Винт 2 = Винт 1, если не установлено иначе.



D ₁	H ₁	Thread 1 Závit 1 Винт 1 (Gxh)	Thread 2 Závit 2 Винт 2 (Gxh)	ShA Шор А	Shape Tvar Модель	Type Typ Тип
----------------	----------------	--	--	--------------	-------------------------	--------------------

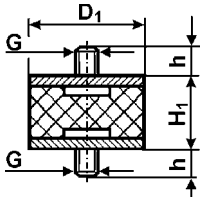
50	25	M10x20	-	55	-	4
50	25	M10x28	-	55	-	4
50	25	M10x33	-	55	-	4
50	25	M12x28	-	55	-	4
50	25	M 8	-	55	-	5
50	25	M10	-	55	-	5
50	25	M12	-	55	-	5
50	25	M16	-	55	-	5
50	27	M12x37	-	55	-	2
50	28	M10x28	-	55	-	4
50	28	M10x33	-	55	-	4
50	28	M10x34	-	55	-	4
50	28	M10	-	55	-	5
50	30	M 6x15	-	55	-	1
50	30	M 8x28	-	55	-	1
50	30	M10x10	-	55	-	1
50	30	M10x16	-	55	-	1
50	30	M10x17	-	55	-	1
50	30	M10x20	-	55	-	1
50	30	M10x25	-	55	-	1
50	30	M10x28	-	55	-	1
50	30	M10x28	M10x38	55	-	1
50	30	M10x33	-	55	-	1
50	30	M10x34	-	55	-	1
50	30	M12x28	-	55	-	1
50	30	M 8x12	-	55	-	2
50	30	M 8x28	-	55	-	2
50	30	M10x10	-	55	-	2
50	30	M10x15	-	55	-	2
50	30	M10x16	-	55	-	2
50	30	M10x17	-	55	-	2
50	30	M10x18	-	55	-	2
50	30	M10x19	-	70	222.12	2
50	30	M10x20	-	55	-	2
50	30	M10x23	-	55	-	2
50	30	M10x25	-	55	-	2
50	30	M10x28	-	55	-	2
50	30	M10x43	-	55	-	2
50	30	M12x28	-	55	-	2
50	30	M16x43	M10	55	-	2
50	30	M 5	-	55	-	3
50	30	M 8	-	55	-	3
50	30	M10	-	55	-	3
50	30	M12	-	55	-	3
50	30	M 8x23	-	55	-	4
50	30	M 8x28	-	55	-	4
50	30	M10x28	-	55	-	4
50	30	M12x23	-	55	-	4
50	30	M12x28	-	55	-	4
50	30	M10	-	55	-	5

D ₁	H ₁	Thread 1 Závit 1 Винт 1 (Gxh)	Thread 2 Závit 2 Винт 2 (Gxh)	ShA Шор А	Shape Tvar Модель	Type Typ Тип
----------------	----------------	--	--	--------------	-------------------------	--------------------

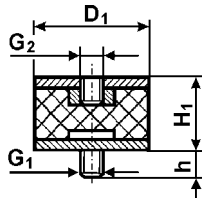
50	30	M12	-	55	-	5
50	35	M10x20	-	55	-	1
50	35	M10x25	-	55	-	1
50	35	M10x28	-	55	-	1
50	35	M10x33	-	55	-	1
50	35	M10x12	-	55	-	2
50	35	M10x23	-	55	-	2
50	35	M10	-	55	-	3
50	35	M10x28	-	55	-	4
50	35	M12	-	55	-	5
50	37,5	M10	-	55	-	3
50	37,5	M10x28	-	55	-	4
50	37,5	M10	-	55	-	5
50	40	M 8x23	-	55	-	1
50	40	M 8x28	-	55	-	1
50	40	M10x15	-	55	-	1
50	40	M10x17	-	55	-	1
50	40	M10x20	-	40	63.12	1
50	40	M10x20	-	50	63.12	1
50	40	M10x20	-	60	63.12	1
50	40	M10x20	-	55	-	1
50	40	M10x23	-	55	-	1
50	40	M10x25	-	55	-	1
50	40	M10x28	-	55	-	1
50	40	M10x28	M10x17	55	-	1
50	40	M10x30	-	55	-	1
50	40	M10x34	-	55	-	1
50	40	M10x35	-	55	-	1
50	40	M12x20	-	55	-	1
50	40	M12x21	-	55	-	1
50	40	M12x28	-	55	-	1
50	40	M12x38	-	55	-	1
50	40	M12x43	-	55	-	1
50	40	M16x38	-	55	-	1
50	40	M10x15	-	55	-	2
50	40	M10x18	-	55	-	2
50	40	M10x19	-	40	217.12	2
50	40	M10x19	-	50	217.12	2
50	40	M10x19	-	60	217.12	2
50	40	M10x20	-	55	-	2
50	40	M10x24	-	55	-	2
50	40	M10x25	-	55	-	2
50	40	M10x28	-	55	-	2
50	40	M10x33	-	55	-	2
50	40	M 8	-	55	-	3
50	40	M10	-	55	-	3
50	40	M12	-	55	-	3
50	40	M10x10	-	55	-	4
50	40	M10x15	-	55	-	4
50	40	M10x20	-	55	-	4

Note: Thread 2 = Thread 1 unless otherwise specified. / Poznámka: Závit 2 = Závit 1 pokud není uvedeno jinak. / Заметка: Винт 2 = Винт 1, если не установлено иначе.

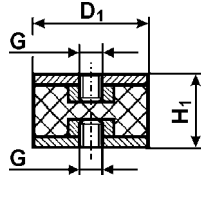
Type 1



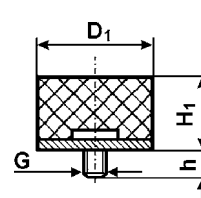
Type 2



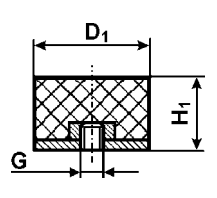
Type 3



Type 4



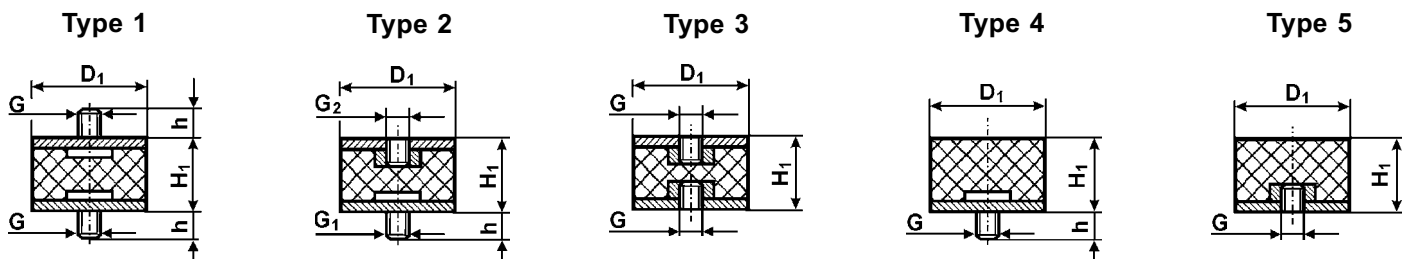
Type 5



D ₁	H ₁	Thread 1 Závit 1 Винт 1 (Gxh)	Thread 2 Závit 2 Винт 2 (Gxh)	ShA Шор A	Shape Tvar Модель	Typ Тип
50	40	M10x22	-	55	-	4
50	40	M10x23	-	55	-	4
50	40	M10x25	-	55	-	4
50	40	M10x28	-	55	-	4
50	40	M10x37	-	55	-	4
50	40	M12x38	-	55	-	4
50	40	M10	-	55	-	5
50	40	M12	-	55	-	5
50	42	M10x28	-	55	-	4
50	45	M 8x13	-	55	-	1
50	45	M 8x23	-	55	-	1
50	45	M 8x28	-	55	-	1
50	45	M10x28	-	55	-	1
50	45	M10x33	-	55	-	1
50	45	M 8x23	-	55	-	2
50	45	M 8x28	-	55	-	2
50	45	M10x10	-	55	-	2
50	45	M10x15	-	55	-	2
50	45	M10x20	-	55	-	2
50	45	M10x23	-	55	-	2
50	45	M10x25	-	55	-	2
50	45	M10x28	-	55	-	2
50	45	M10x30	-	55	-	2
50	45	M10x33	-	55	-	2
50	45	M10x33	M10x12	55	-	2
50	45	M10x34	-	55	-	2
50	45	M10x38	-	55	-	2
50	45	M10x43	-	55	-	2
50	45	M12x28	-	55	-	2
50	45	M12x37	-	55	-	2
50	45	M10	-	55	-	3
50	45	M12	-	55	-	3
50	45	M10x25	-	55	-	4
50	45	M10x28	-	55	-	4
50	45	M10x33	-	55	-	4
50	45	M 8	-	55	-	5
50	45	M10	-	55	-	5
50	50	M 8x23	-	55	-	1
50	50	M 8x28	-	55	-	1
50	50	M10x10	-	55	-	1
50	50	M10x18	-	55	-	1
50	50	M10x25	-	55	-	1
50	50	M10x28	-	55	-	1
50	50	M10x33	-	55	-	1
50	50	M12x37	-	55	-	1
50	50	M10x23	-	55	-	2
50	50	M10x25	-	55	-	2
50	50	M10x28	-	55	-	2
50	50	M10x33	-	55	-	2
50	50	M10x34	-	55	-	2

D ₁	H ₁	Thread 1 Závit 1 Винт 1 (Gxh)	Thread 2 Závit 2 Винт 2 (Gxh)	ShA Шор A	Shape Tvar Модель	Typ Тип
50	50	M 8	-	55	-	3
50	50	M10	-	55	-	3
50	50	M10x15	-	55	-	4
50	50	M10x20	-	55	-	4
50	50	M10x25	-	55	-	4
50	50	M10x28	-	55	-	4
50	50	M10x33	-	55	-	4
50	50	M12x18	-	55	-	4
50	50	M10	-	55	-	5
50	50	M12	-	55	-	5
50	50	M20	-	55	-	5
50	55	M10x28	-	55	-	1
50	55	M10x28	-	55	-	2
50	55	M12x28	-	55	-	2
50	55	M12x28	M10	55	-	2
50	55	M 8	-	55	-	3
50	55	M12	-	55	-	3
50	55	M10x28	-	55	-	4
50	60	M10x15	-	55	-	2
50	60	M10x28	-	55	-	2
50	60	M10x15	-	55	-	4
50	60	M10x20	-	55	-	4
50	60	M10x28	-	55	-	4
50	60	M10	-	55	-	5
50	65	M10x25	-	55	-	1
50	70	M10	-	55	-	3
50	70	M10x28	-	55	-	4
50	70	M10x38	-	55	-	4
50	80	M10x27	-	55	-	1
50	80	M10x15	-	55	-	4
50	80	M10x28	-	55	-	4
60	15	M10x25	-	55	-	4
60	15	M12x30	-	55	-	4
60	16	M 8x20	-	55	-	2
60	16	M10x42	-	55	-	4
60	20	M10x28	-	55	-	2
60	20	M 8x16	-	55	-	4
60	20	M10x28	-	55	-	4
60	20	M10x38	-	55	-	4
60	20	M10x42	-	55	-	4
60	20	M12x37	-	55	-	4
60	20	M14x68	-	55	-	4
60	25	M 6x20	-	55	-	1
60	25	M 8x20	-	55	-	1
60	25	M10x25	-	55	-	1
60	25	M10x25	M10x12	55	-	1
60	25	M10x28	-	55	-	1
60	25	M12x37	-	55	-	1
60	25	M16x47	-	55	-	1
60	25	M10x28	-	55	-	2

Note: Thread 2 = Thread 1 unless otherwise specified. / Poznámka: Závit 2 = Závit 1 pokud není uvedeno jinak. / Заметка: Винт 2 = Винт 1, если не установлено иначе.

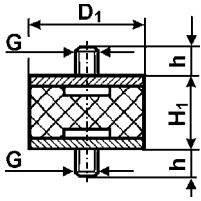


D ₁	H ₁	Thread 1 Závit 1 Винт 1 (Gxh)	Thread 2 Závit 2 Винт 2 (Gxh)	ShA Шор А	Shape Tvar Модель	Typ Тур Тип
60	25	M10x20	-	55	-	4
60	25	M10x25	-	55	-	4
60	25	M10x28	-	55	-	4
60	25	M16x42	-	55	-	4
60	25	M10	-	55	-	5
60	25	M12	-	55	-	5
60	30	M10x28	-	55	-	1
60	30	M12x23	-	55	-	1
60	30	M12x25	-	55	-	1
60	30	M12x33	-	55	-	1
60	30	M12x37	-	55	-	1
60	30	M10x20	-	55	-	2
60	30	M10x28	-	55	-	2
60	30	M10x33	-	55	-	2
60	30	M12x28	-	55	-	2
60	30	M12x33	-	55	-	2
60	30	M12x37	-	55	-	2
60	30	M 8	-	55	-	3
60	30	M10	-	55	-	3
60	30	M12	-	55	-	3
60	30	M16	-	55	-	3
60	30	M 8x20	-	55	-	4
60	30	M10x20	-	55	-	4
60	30	M10x28	-	55	-	4
60	30	M10x38	-	55	-	4
60	30	M12x33	-	55	-	4
60	30	M12x37	-	55	-	4
60	30	M 8	-	55	-	5
60	30	M10	-	55	-	5
60	30	M12	-	55	-	5
60	35	M 8x28	-	55	-	1
60	35	M10x20	-	55	-	1
60	35	M10x25	-	55	-	1
60	35	M10x28	-	55	-	1
60	35	M12x33	-	55	-	1
60	35	M12x37	-	55	-	1
60	35	M10x15	-	55	-	2
60	35	M10x20	-	55	-	2
60	35	M10x25	-	55	-	2
60	35	M10x28	-	55	-	2
60	35	M12x18	-	55	-	2
60	35	M12x27	-	55	-	2
60	35	M10	-	55	-	3
60	35	M12	-	55	-	3
60	35	M 8x33	-	55	-	4
60	35	M10x28	-	55	-	4
60	35	M10x70	-	55	-	4
60	35	M12	-	55	-	5
60	40	M 8x33	-	55	-	1
60	40	M10x28	-	55	-	1

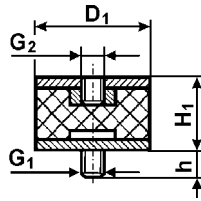
D ₁	H ₁	Thread 1 Závit 1 Винт 1 (Gxh)	Thread 2 Závit 2 Винт 2 (Gxh)	ShA Шор А	Shape Tvar Модель	Typ Тур Тип
60	40	M10x33	M10x27	55	-	1
60	40	M12x20	-	55	-	1
60	40	M12x25	-	55	-	1
60	40	M12x28	-	55	-	1
60	40	M12x33	-	55	-	1
60	40	M12x37	-	55	-	1
60	40	M10x28	-	55	-	2
60	40	M12x20	-	55	-	2
60	40	M12x23	-	55	-	2
60	40	M12x25	-	55	-	2
60	40	M12x28	-	55	-	2
60	40	M12x33	-	55	-	2
60	40	M12x35	-	55	-	2
60	40	M12x37	-	55	-	2
60	40	M10	-	55	-	3
60	40	M12	-	55	-	3
60	40	M16	-	55	-	3
60	40	M10x28	-	55	-	4
60	40	M10x58	-	55	-	4
60	40	M10x70	-	55	-	4
60	40	M12x23	-	55	-	4
60	40	M12x33	-	55	-	4
60	40	M10	-	55	-	5
60	40	M12	-	55	-	5
60	43	M12x38	-	55	-	1
60	45	M 8x23	-	55	-	1
60	45	M10x28	-	55	-	1
60	45	M10x38	-	55	-	1
60	45	M12x28	-	55	-	1
60	45	M12x30	-	55	-	1
60	45	M12x33	-	55	-	1
60	45	M10x20	-	55	-	2
60	45	M12x37	-	55	-	2
60	45	M14x37	-	55	-	2
60	45	M10x28	-	55	-	4
60	50	M 8x28	-	55	-	1
60	50	M10x20	-	55	-	1
60	50	M10x28	-	55	-	1
60	50	M12x28	-	55	-	1
60	50	M12x33	-	55	-	1
60	50	M12x37	-	55	-	1
60	50	M10x20	-	55	-	2
60	50	M10x28	-	55	-	2
60	50	M10x33	-	55	-	2
60	50	M12x37	-	55	-	2
60	50	M12	-	55	-	3
60	50	M10x28	-	55	-	4
60	50	M12x33	-	55	-	4
60	50	M12x37	-	55	-	4
60	50	M10	-	55	-	5

Note: Thread 2 = Thread 1 unless otherwise specified. / Poznámka: Závit 2 = Závit 1 pokud není uvedeno jinak. / Заметка: Винт 2 = Винт 1, если не установлено иначе.

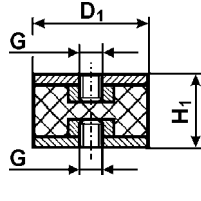
Type 1



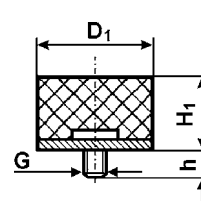
Type 2



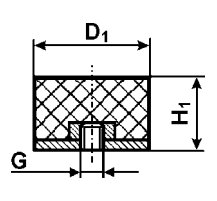
Type 3



Type 4



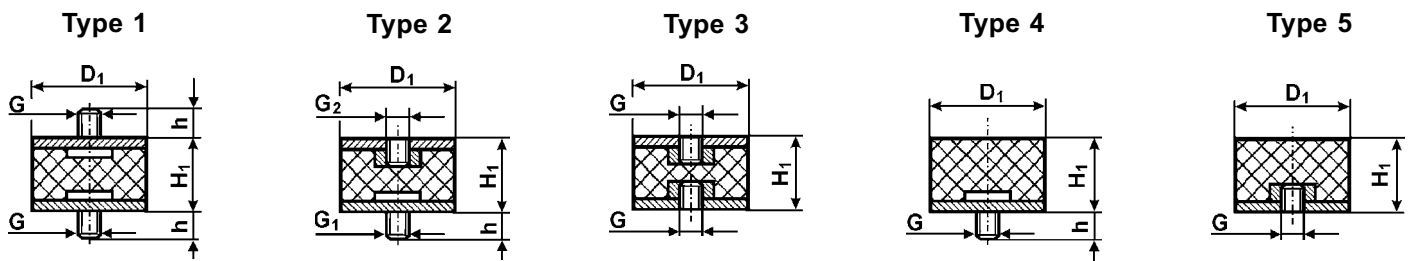
Type 5



D ₁	H ₁	Thread 1 Závit 1 Винт 1 (Gxh)	Thread 2 Závit 2 Винт 2 (Gxh)	ShA Шор A	Shape Tvar Модель	Typ Тип
60	50	M12	-	55	-	5
60	60	M10x20	-	55	-	1
60	60	M10x25	-	55	-	1
60	60	M10x28	-	55	-	1
60	60	M10x38	-	55	-	1
60	60	M12x28	-	55	-	1
60	60	M12x38	-	55	-	1
60	60	M12	-	55	-	3
60	60	M16	-	55	-	3
60	60	M10x20	-	55	-	4
60	60	M10x23	-	55	-	4
60	60	M10x28	-	55	-	4
60	60	M10x38	-	55	-	4
60	60	M12x23	-	55	-	4
60	60	M12x28	-	55	-	4
60	60	M12x37	-	55	-	4
60	60	M10	-	55	-	5
62	46	M12x27	-	55	-	1
62	46	M12x27	-	55	-	2
63	46,5	M12x27	-	55	-	1
64	35	M10x18	-	40	141.12	1
64	35	M10x18	-	60	141.12	1
65	35	M10x20	-	55	-	1
65	35	M10x28	-	55	-	1
65	35	M12x25	-	55	-	1
65	35	M12x37	-	55	-	1
65	35	M10x16,5	-	40	32.12	2
65	35	M10x16,5	-	70	32.12	2
65	35	M12x18	-	55	-	2
65	35	M12	-	55	-	3
70	20	M10x28	-	55	-	1
70	20	M 8x23	-	55	-	4
70	20	M10x38	-	55	-	4
70	20	M12x37	-	55	-	4
70	20	M14x20	-	55	-	4
70	25	M12x37	-	55	-	1
70	25	M10x20	-	55	-	2
70	25	M12x33	-	55	-	2
70	25	M12x37	-	55	-	2
70	25	M10x25	-	55	-	4
70	25	M10x28	-	55	-	4
70	25	M10x32	-	55	-	4
70	25	M10x35	-	55	-	4
70	25	M10x85	-	55	-	4
70	25	M12x18	-	55	-	4
70	25	M10	-	55	-	5
70	25	M12	-	55	-	5
70	30	M12x37	-	55	-	1
70	30	M12x37	-	55	-	2
70	30	M10	-	55	-	3

D ₁	H ₁	Thread 1 Závit 1 Винт 1 (Gxh)	Thread 2 Závit 2 Винт 2 (Gxh)	ShA Шор A	Shape Tvar Модель	Typ Тип
70	30	M12x33	-	55	-	4
70	30	M16x37	-	55	-	4
70	30	M10	-	55	-	5
70	30	M12	-	55	-	5
70	35	M10x25	-	55	-	1
70	35	M10x28	-	55	-	1
70	35	M10x38	-	55	-	1
70	35	M12x28	-	55	-	1
70	35	M12x37	-	55	-	1
70	35	M12x28	-	55	-	2
70	35	M10	-	55	-	3
70	35	M12	-	55	-	3
70	35	M10x25	-	55	-	4
70	35	M10x28	-	55	-	4
70	35	M12x40	-	55	-	4
70	35	M10	-	55	-	5
70	40	M 8x18	-	55	-	1
70	40	M10x25	-	55	-	1
70	40	M10x28	-	55	-	1
70	40	M12x25	-	55	-	1
70	40	M12x28	-	55	-	1
70	40	M12x37	-	55	-	1
70	40	M10x15	-	55	-	2
70	40	M10x28	-	55	-	2
70	40	M12x37	-	55	-	2
70	40	M10	-	55	-	3
70	40	M12	-	55	-	3
70	40	M10x25	-	55	-	4
70	40	M10x28	-	55	-	4
70	40	M12x37	-	55	-	4
70	40	M12	-	55	-	5
70	45	M10x25	-	55	-	1
70	45	M10x28	-	55	-	1
70	45	M10x30	-	55	-	1
70	45	M10x33	-	55	-	1
70	45	M10x43	-	55	-	1
70	45	M12x37	-	55	-	1
70	45	M10x23	-	55	-	2
70	45	M10x25	-	55	-	2
70	45	M10x28	-	55	-	2
70	45	M10x30	-	55	-	2
70	45	M10x38	-	55	-	2
70	45	M10x43	-	55	-	2
70	45	M12x10	-	55	-	2
70	45	M12x13	-	55	-	2
70	45	M12x23	-	55	-	2
70	45	M12x24	-	55	-	2
70	45	M12x33	-	55	-	2
70	45	M12x37	-	55	-	2
70	45	M16x20	-	55	-	2

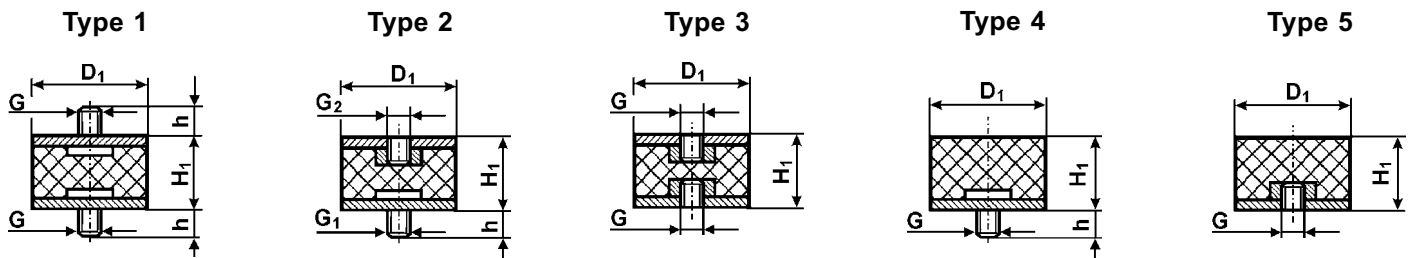
Note: Thread 2 = Thread 1 unless otherwise specified. / Poznámka: Závit 2 = Závit 1 pokud není uvedeno jinak. / Заметка: Винт 2 = Винт 1, если не установлено иначе.



D ₁	H ₁	Thread 1 Závit 1 Винт 1 (Gxh)	Thread 2 Závit 2 Винт 2 (Gxh)	ShA Шор А	Shape Tvar Модель	Typ Тур Тип
70	45	M 8	-	55	-	3
70	45	M10	-	55	-	3
70	45	M12	-	55	-	3
70	45	M16	-	55	-	3
70	45	M10x25	-	55	-	4
70	45	M10x28	-	55	-	4
70	45	M10x38	-	55	-	4
70	45	M12x37	-	55	-	4
70	45	M10	-	55	-	5
70	45	M12	-	55	-	5
70	47	M10	-	55	-	5
70	48	M12x24	-	40	87.12	1
70	48	M12x24	-	50	87.12	1
70	48	M12x24	-	60	87.12	1
70	50	M10x28	-	55	-	1
70	50	M12x27	-	55	-	1
70	50	M12x37	-	55	-	1
70	50	M10x25	-	55	-	2
70	50	M10x28	-	55	-	2
70	50	M12x37	-	55	-	2
70	50	M10	-	55	-	3
70	50	M12	-	55	-	3
70	50	M12x37	-	55	-	4
70	50	M10	-	55	-	5
70	50	M12	-	55	-	5
70	53	M12	-	55	-	3
70	55	M12x37	-	55	-	1
70	55	M12x37	-	55	-	2
70	55	M10	-	55	-	3
70	55	M12	-	55	-	3
70	55	M10x33	-	55	-	4
70	55	M12x37	-	55	-	4
70	55	M12	-	55	-	5
70	60	M10x25	-	55	-	1
70	60	M10x28	-	55	-	1
70	60	M10x37	-	55	-	1
70	60	M12x37	-	55	-	1
70	60	M10x25	-	55	-	2
70	60	M10x28	-	55	-	2
70	60	M12x37	-	55	-	2
70	60	M12	-	55	-	3
70	60	M10x28	-	55	-	4
70	60	M12x37	-	55	-	4
70	70	M10x28	-	55	-	1
70	70	M12x27	-	55	-	1
70	70	M12x37	-	55	-	1
70	70	M10x28	-	55	-	2
70	70	M12x37	-	55	-	2
70	70	M16x27	-	55	-	2
70	70	M10	-	55	-	3

D ₁	H ₁	Thread 1 Závit 1 Винт 1 (Gxh)	Thread 2 Závit 2 Винт 2 (Gxh)	ShA Шор А	Shape Tvar Модель	Typ Тур Тип
70	70	M12	-	55	-	3
70	70	M10x25	-	55	-	4
70	70	M12x42	-	55	-	4
75	20	M10x28	-	55	-	4
75	20	M10x42	-	55	-	4
75	20	M12x37	-	55	-	4
75	20	M12x38	-	55	-	4
75	20	M12x47	-	55	-	4
75	20	M12	-	55	-	5
75	25	M 6x18	-	55	-	1
75	25	M 8x28	-	55	-	1
75	25	M10x28	-	55	-	1
75	25	M12x37	-	55	-	1
75	25	M12x37	M12x22	55	-	1
75	25	M12x47	-	55	-	1
75	25	M12x50	-	55	-	1
75	25	M10x27	-	55	-	2
75	25	M10x28	-	55	-	2
75	25	M12x37	-	55	-	2
75	25	M10x20	-	55	-	4
75	25	M10x25	-	55	-	4
75	25	M10x28	-	55	-	4
75	25	M10x33	-	55	-	4
75	25	M10x37	-	55	-	4
75	25	M12x12	-	55	-	4
75	25	M12x25	-	55	-	4
75	25	M12x37	-	55	-	4
75	25	M10	-	55	-	5
75	25	M12	-	55	-	5
75	25	M16	-	55	-	5
75	30	M12x28	-	55	-	1
75	30	M12x37	-	55	-	1
75	30	M12x37	-	55	-	2
75	30	M 8	-	55	-	3
75	30	M12	-	55	-	3
75	30	M12x33	-	55	-	4
75	30	M12x37	-	55	-	4
75	30	M12	-	55	-	5
75	35	M10x28	-	55	-	1
75	35	M10x33	-	55	-	1
75	35	M12x37	-	55	-	1
75	35	M12x37	-	55	-	2
75	35	M10	-	55	-	3
75	35	M12	-	55	-	3
75	35	M10x20	-	55	-	4
75	35	M12x37	-	55	-	4
75	35	M12x40	-	55	-	4
75	35	M12	-	55	-	5
75	40	M 8x18	-	55	-	1
75	40	M10x28	-	55	-	1

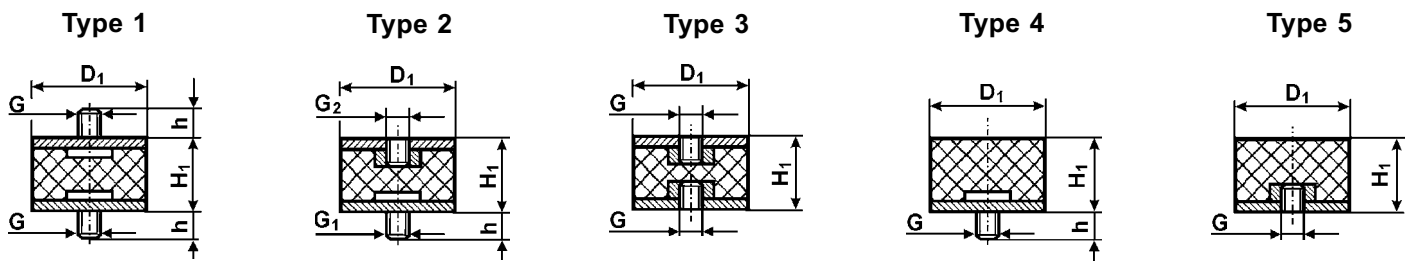
Note: Thread 2 = Thread 1 unless otherwise specified. / Poznámka: Závit 2 = Závit 1 pokud není uvedeno jinak. / Заметка: Винт 2 = Винт 1, если не установлено иначе.



D ₁	H ₁	Thread 1 Závit 1 Винт 1 (Gxh)	Thread 2 Závit 2 Винт 2 (Gxh)	ShA Шор А	Shape Твар Модель	Туре Тур Тип
75	40	M10x37	-	55	-	1
75	40	M12x12	-	55	-	1
75	40	M12x27	-	55	-	1
75	40	M12x33	-	55	-	1
75	40	M12x37	-	55	-	1
75	40	M12x40	-	55	-	1
75	40	M10x22	-	55	-	2
75	40	M10x28	-	55	-	2
75	40	M10x38	-	55	-	2
75	40	M12x18	-	55	-	2
75	40	M12x22	-	55	-	2
75	40	M12x25	-	55	-	2
75	40	M12x27	-	55	-	2
75	40	M12x33	-	55	-	2
75	40	M12x37	-	55	-	2
75	40	M12x38	-	55	-	2
75	40	M10	-	55	-	3
75	40	M12	-	55	-	3
75	40	M16	-	55	-	3
75	40	M 8x30	-	55	-	4
75	40	M10x15	-	55	-	4
75	40	M10x23	-	55	-	4
75	40	M10x28	-	55	-	4
75	40	M12x27	-	55	-	4
75	40	M12x33	-	55	-	4
75	40	M12x37	-	55	-	4
75	40	M12	-	55	-	5
75	40	M16	-	55	-	5
75	45	M10x28	-	55	-	1
75	45	M12x37	-	55	-	1
75	45	M10x28	-	55	-	2
75	45	M10x30	-	55	-	2
75	45	M10x68	-	55	-	2
75	45	M12x23	-	55	-	2
75	45	M12x24	-	55	-	2
75	45	M12x33	-	55	-	2
75	45	M12x37	-	55	-	2
75	45	M10	-	55	-	3
75	45	M12	-	55	-	3
75	45	M10x28	-	55	-	4
75	45	M12x27	-	55	-	4
75	45	M12x37	-	55	-	4
75	45	M10	-	55	-	5
75	45	M12	-	55	-	5
75	50	M10x28	-	55	-	1
75	50	M12x17	-	55	-	1
75	50	M12x28	-	55	-	1
75	50	M12x37	-	55	-	1
75	50	M16x37	-	55	-	1
75	50	M10x20	-	55	-	2

D ₁	H ₁	Thread 1 Závit 1 Винт 1 (Gxh)	Thread 2 Závit 2 Винт 2 (Gxh)	ShA Шор А	Shape Твар Модель	Туре Тур Тип
75	50	M10x23	-	55	-	2
75	50	M10x25	-	55	-	2
75	50	M10x28	-	55	-	2
75	50	M12x17	-	55	-	2
75	50	M12x28	-	55	-	2
75	50	M12x33	-	55	-	2
75	50	M12x37	-	55	-	2
75	50	M10	-	55	-	3
75	50	M12	-	55	-	3
75	50	M16	-	55	-	3
75	50	M12x37	-	55	-	4
75	50	M12	-	55	-	5
75	52	M12x37	-	55	-	1
75	52	M12x37	-	55	-	4
75	55	M12x28	-	55	-	1
75	55	M12x30	-	55	-	1
75	55	M12x30	M20x100	55	-	1
75	55	M12x30	M20x125	55	-	1
75	55	M12x37	-	55	-	1
75	55	M10x38	-	55	-	2
75	55	M12x25	-	55	-	2
75	55	M12x37	-	55	-	2
75	55	M16x37	-	55	-	2
75	55	M10	-	55	-	3
75	55	M12	-	55	-	3
75	55	M14	-	55	-	3
75	55	M16	-	55	-	3
75	55	M10x28	-	55	-	4
75	55	M10x37	-	55	-	4
75	55	M12x37	-	55	-	4
75	55	M20x80	-	55	-	4
75	55	M12	-	55	-	5
75	60	M12x37	-	55	-	1
75	60	M10x28	-	55	-	2
75	60	M12x33	-	55	-	2
75	60	M12x37	-	55	-	2
75	60	M12	-	55	-	3
75	60	M10x33	-	55	-	4
75	60	M12x33	-	55	-	4
75	60	M12x37	-	55	-	4
75	65	M12	-	55	-	5
75	70	M12x23	-	55	-	1
75	70	M12x30	-	55	-	1
75	70	M12x37	-	55	-	1
75	70	M12	-	55	-	3
75	70	M12x37	-	55	-	4
75	70	M12x37	-	55	-	1
75	70	M12x37	-	55	-	2
75	70	M12	-	55	-	3
75	70	M12x37	-	55	-	4
75	100	M12x37	-	55	-	1
75	100	M12x37	-	55	-	2
75	100	M12x37	-	55	-	4

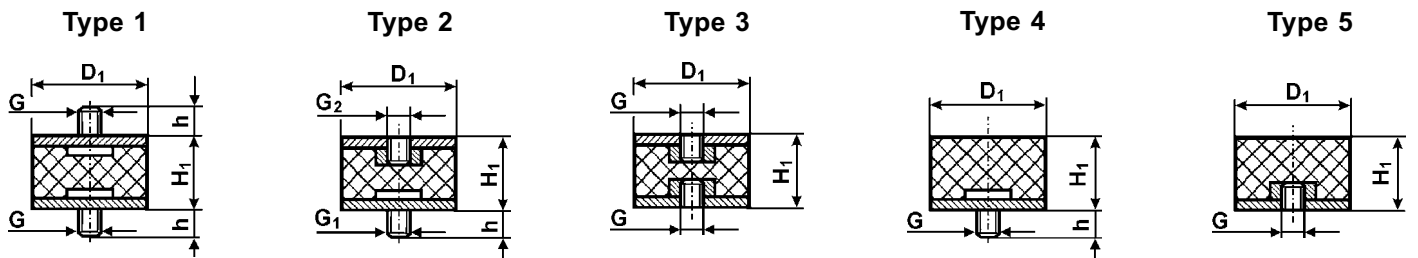
Note: Thread 2 = Thread 1 unless otherwise specified. / **Poznámka:** Závit 2 = Závit 1 pokud není uvedeno jinak. / **Заметка:** Винт 2 = Винт 1, если не установлено иначе.



D ₁	H ₁	Thread 1 Závit 1 Винт 1 (Gxh)	Thread 2 Závit 2 Винт 2 (Gxh)	ShA Шор А	Shape Tvar Модель	Typ Тур Тип
80	17	M10x28	-	55	-	1
80	17	M12x37	-	55	-	1
80	18	M10x28	-	55	-	1
80	30	M12x28	-	55	-	1
80	30	M14x37	-	55	-	1
80	30	M14x47	-	55	-	1
80	30	M12x28	-	55	-	2
80	30	M12x37	-	55	-	2
80	30	M14x37	-	55	-	4
80	30	M14x47	-	55	-	4
80	37	M12x23	-	60	68.12	1
80	40	M14x37	-	55	-	1
80	40	M20x46	-	55	-	2
80	40	M12x33	-	55	-	4
80	40	M12x35	-	55	-	4
80	40	M12x37	-	55	-	4
80	40	M14x37	-	55	-	4
80	40	M12	-	55	-	5
80	50	M10x27	-	55	-	1
80	60	M12x37	-	55	-	1
80	60	M10x28	-	55	-	2
80	60	M14x37	-	55	-	4
80	70	M12x47	-	55	-	1
80	70	M14x37	-	55	-	1
80	70	M12x37	-	55	-	2
80	70	M14x37	-	55	-	4
80	75	M12x37	-	55	-	1
80	80	M12x36	-	55	-	1
80	80	M12x37	-	55	-	1
80	80	M16x37	-	55	-	1
80	80	M16x41	-	55	-	1
80	80	M16x47	-	55	-	1
80	80	M16x50	-	55	-	1
80	80	M12x12	-	55	-	2
80	80	M16x41	-	55	-	2
80	80	M16	-	55	-	3
80	80	M12x36	-	55	-	4
80	80	M12	-	55	-	5
90	55	M12	-	55	-	5
90	60	M12x28	-	55	-	4
90	60	M12x30	-	55	-	4
100	25	M12x25	M12x47	55	-	1
100	25	M16x41	-	55	-	1
100	25	M16x45	-	55	-	1
100	25	M10x28	-	55	-	4
100	25	M16x41	-	55	-	4
100	25	M16x46	-	55	-	4
100	30	M16x41	-	55	-	1
100	30	M16x45	-	55	-	1
100	30	M16x50	-	55	-	1

D ₁	H ₁	Thread 1 Závit 1 Винт 1 (Gxh)	Thread 2 Závit 2 Винт 2 (Gxh)	ShA Шор А	Shape Tvar Модель	Typ Тур Тип
100	30	M16x41	-	55	-	2
100	30	M12	-	55	-	3
100	30	M 8x23	-	55	-	4
100	30	M12x33	-	55	-	4
100	30	M12x37	-	55	-	4
100	30	M16x20	-	55	-	4
100	30	M16x41	-	55	-	4
100	30	M16	-	55	-	5
100	35	M16x41	-	55	-	1
100	35	M16	-	55	-	3
100	40	M12x37	-	55	-	1
100	40	M14x25	-	50	37.12	1
100	40	M16x27	-	55	-	1
100	40	M16x38	-	55	-	1
100	40	M16x41	-	55	-	1
100	40	M12x18	-	55	-	2
100	40	M12x36	-	55	-	2
100	40	M12x37	-	55	-	2
100	40	M16x16	-	55	-	2
100	40	M16x26	-	55	-	2
100	40	M16x32	-	55	-	2
100	40	M16x36	-	55	-	2
100	40	M16x41	-	55	-	2
100	40	M16x42	-	55	-	2
100	40	M16x45	-	55	-	2
100	40	M16x46	-	55	-	2
100	40	M16x47	-	55	-	2
100	40	M16	-	55	-	3
100	40	M10x28	-	55	-	4
100	40	M12x37	-	55	-	4
100	40	M12x41	-	55	-	4
100	40	M16x41	-	55	-	4
100	40	M16x43	-	55	-	4
100	40	M12	-	55	-	5
100	40	M16	-	55	-	5
100	45	M12x30	-	55	-	1
100	45	M12x42	-	55	-	1
100	45	M16x41	-	55	-	2
100	45	M16	-	55	-	3
100	50	M12x37	-	55	-	1
100	50	M12x42	-	55	-	1
100	50	M14x25	-	50	96.12	1
100	50	M14x25	-	60	96.12	1
100	50	M16x26	-	55	-	1
100	50	M16x41	-	55	-	1
100	50	M20x50	-	55	-	1
100	50	M12x37	-	55	-	2
100	50	M16x41	-	55	-	2
100	50	M12	-	55	-	3
100	50	M14	-	60	163.12	3

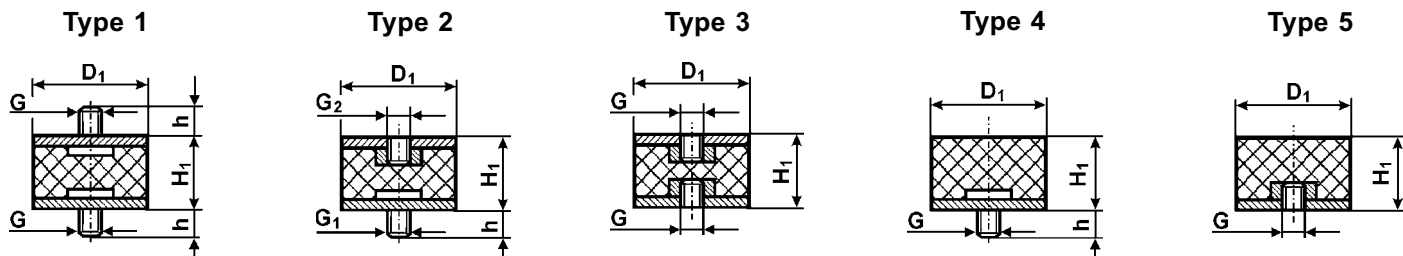
Note: Thread 2 = Thread 1 unless otherwise specified. / Poznámka: Závit 2 = Závit 1 pokud není uvedeno jinak. / Заметка: Винт 2 = Винт 1, если не установлено иначе.



D ₁	H ₁	Thread 1 Závit 1 Винт 1 (Gxh)	Thread 2 Závit 2 Винт 2 (Gxh)	ShA Шор A	Shape Tvar Модель	Typ Тип
100	50	M16	-	55	-	3
100	50	M12x37	-	55	-	4
100	50	M16x41	-	55	-	4
100	50	M16x46	-	55	-	4
100	50	M16x56	-	55	-	4
100	50	M16	-	55	-	5
100	55	M12x25	-	55	-	1
100	55	M12x37	-	55	-	1
100	55	M16x41	-	55	-	1
100	55	M16x45	-	55	-	1
100	55	M16x46	-	55	-	1
100	55	M10x44	-	55	-	2
100	55	M16x26	-	55	-	2
100	55	M16x41	-	55	-	2
100	55	M16x43	-	55	-	2
100	55	M16x44	-	55	-	2
100	55	M16x45	-	55	-	2
100	55	M10	-	55	-	3
100	55	M12	-	55	-	3
100	55	M14	-	55	-	3
100	55	M16	-	55	-	3
100	55	M16x41	-	55	-	4
100	55	M16	-	55	-	5
100	60	M12x25	-	55	-	1
100	60	M16x21	-	55	-	1
100	60	M16x26	-	55	-	1
100	60	M16x27	-	55	-	1
100	60	M16x41	-	55	-	1
100	60	M16x44	-	55	-	1
100	60	M16x46	-	55	-	1
100	60	M16x41	-	55	-	2
100	60	M16	-	55	-	3
100	60	M16x41	-	55	-	4
100	60	M16	-	55	-	5
100	65	M12x25	-	40	109.12	1
100	65	M12x25	-	50	109.12	1
100	65	M12x25	-	60	109.12	1
100	65	M12x28	-	55	-	1
100	65	M12x37	-	55	-	1
100	65	M16x41	-	55	-	4
100	70	M16x25	-	55	-	1
100	70	M16x41	-	55	-	1
100	70	M16x52	-	55	-	1
100	70	M10x28	-	55	-	2
100	70	M12x37	-	55	-	2
100	70	M16x41	-	55	-	2
100	70	M12x37	-	55	-	4
100	70	M16	-	55	-	5
100	75	M16x41	-	55	-	1
100	75	M16x46	-	55	-	1

D ₁	H ₁	Thread 1 Závit 1 Винт 1 (Gxh)	Thread 2 Závit 2 Винт 2 (Gxh)	ShA Шор A	Shape Tvar Модель	Typ Тип
100	75	M16x51	-	55	-	1
100	75	M16x31	-	55	-	2
100	75	M16x41	-	55	-	2
100	75	M16	-	55	-	3
100	75	M16x41	-	55	-	4
100	75	M16x47	-	55	-	4
100	75	M16	-	55	-	5
100	80	M16x41	-	55	-	1
100	80	M16x46	-	55	-	1
100	80	M16x25	-	55	-	2
100	80	M16x46	-	55	-	2
100	80	M16x52	-	55	-	2
100	80	M16x41	-	55	-	4
100	80	M20	-	55	-	5
100	100	M12x37	-	55	-	1
100	100	M16x41	-	55	-	1
100	100	M24x41	-	55	-	1
100	100	M16x41	-	55	-	2
100	100	M12	-	55	-	3
100	100	M16	-	55	-	3
100	100	M12x23	-	55	-	4
100	100	M12x37	-	55	-	4
100	100	M16x41	-	55	-	4
100	100	M16	-	55	-	5
120	80	M14x35	-	55	-	1
125	40	M16x37	-	55	-	1
125	40	M16x75	M16x37	55	-	1
125	55	M16x41	-	55	-	2
125	55	M16	-	55	-	3
125	55	M16x41	-	55	-	4
125	60	M16x41	-	55	-	1
125	75	M16x41	-	55	-	1
125	75	M16x41	-	55	-	2
125	90	M16x41	-	55	-	1
125	90	M16	-	55	-	5
125	100	M16x41	-	55	-	1
125	100	M16	-	55	-	5
125	125	M16x41	-	55	-	4
150	45	M16x41	-	55	-	1
150	45	M16	-	55	-	3
150	45	M16x41	-	55	-	4
150	45	M16	-	55	-	5
150	50	M16x100	M16x120	55	-	1
150	50	M16x41	-	55	-	1
150	50	M16x45	-	55	-	1
150	50	M16x41	-	55	-	2
150	50	M16	-	55	-	3
150	50	M20	-	55	-	3
150	50	M16x41	-	55	-	4
150	50	M16	-	55	-	5

Note: Thread 2 = Thread 1 unless otherwise specified. / Poznámka: Závit 2 = Závit 1 pokud není uvedeno jinak. / Заметка: Винт 2 = Винт 1, если не установлено иначе.



D ₁	H ₁	Thread 1 Závit 1 Винт 1 (Gxh)	Thread 2 Závit 2 Винт 2 (Gxh)	ShA Шор А	Shape Tvar Модель	Type Typ Тип
150	55	M16x41	-	55	-	1
150	55	M16x41	-	55	-	2
150	55	M16	-	55	-	3
150	55	M20	-	55	-	3
150	55	M16x41	-	55	-	4
150	55	M16	-	55	-	5
150	60	M16x41	-	55	-	1
150	60	M16x80	M16x37	55	-	1
150	60	M16x41	-	55	-	2
150	60	M20x45	-	55	-	2
150	60	M16	-	55	-	3
150	60	M20	-	55	-	3
150	60	M12x37	-	55	-	4
150	60	M16x41	-	55	-	4
150	60	M16	-	55	-	5
150	75	M16x41	-	55	-	1
150	75	M20x41	-	55	-	1
150	75	M20x45	-	55	-	1
150	75	M16x41	-	55	-	2
150	75	M16x43	-	55	-	2
150	75	M20x41	-	55	-	2
150	75	M20x61	-	55	-	2
150	75	M16	-	55	-	3
150	75	M20	-	55	-	3
150	75	M10x50	-	55	-	4
150	75	M16x16	-	55	-	4
150	75	M16x41	-	55	-	4

D ₁	H ₁	Thread 1 Závit 1 Винт 1 (Gxh)	Thread 2 Závit 2 Винт 2 (Gxh)	ShA Шор А	Shape Tvar Модель	Type Typ Тип
150	75	M20x41	-	55	-	4
150	75	M20x45	-	55	-	4
150	75	M16	-	55	-	5
150	75	M20	-	55	-	5
150	100	M16x41	-	55	-	1
150	100	M20x41	-	55	-	1
150	100	M20x45	-	55	-	1
150	100	M20x46	-	55	-	1
150	100	M16x41	-	55	-	2
150	100	M16	-	55	-	3
150	100	M20	-	55	-	3
150	100	M20	-	55	-	5
150	120	M20x41	-	55	-	2
150	120	M16x41	-	55	-	4
150	150	M16x41	-	55	-	1
150	150	M12x35	-	55	-	4
200	100	M16x41	-	55	-	1
200	100	M20x50	-	55	-	1
200	100	M20x41	-	55	-	2
200	100	M20x50	-	55	-	2
200	100	M12x24	-	55	-	3
200	100	M16	-	55	-	3
200	100	M20	-	55	-	3
200	100	M24	-	55	-	3
200	100	M20x50	-	55	-	4
200	100	M20	-	55	-	5

Note: Thread 2 = Thread 1 unless otherwise specified. / Poznámka: Závit 2 = Závit 1 pokud není uvedeno jinak. / Заметка: Винт 2 = Винт 1, если не установлено иначе.

LOAD CHARACTERISTICS – TYPE 1
ZATĚŽOVACÍ CHARAKTERISTIKY – TYP 1
НАГРУЗОЧНЫЕ ХАРАКТЕРИСТИКИ – ТИП 1

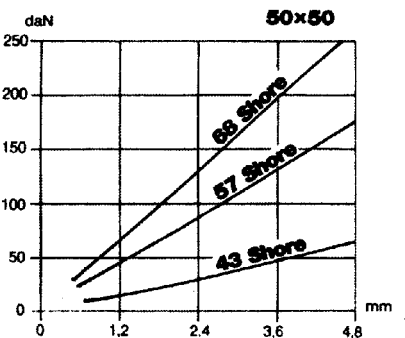
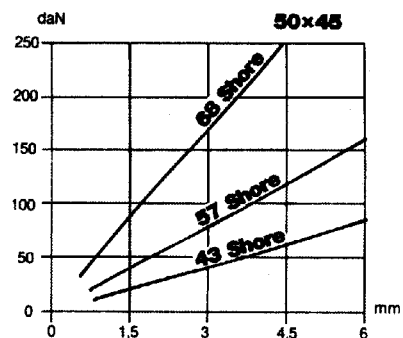
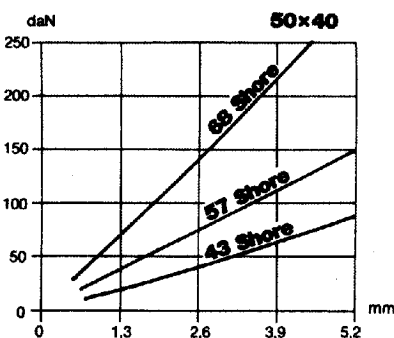
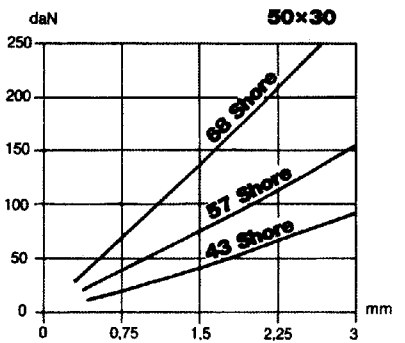
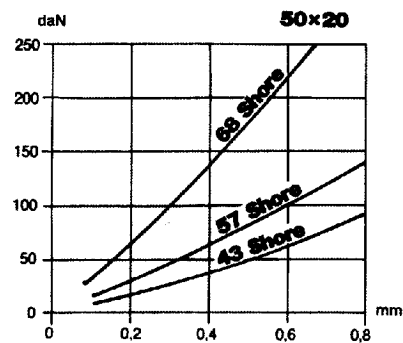
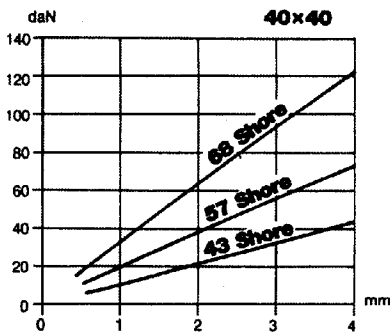
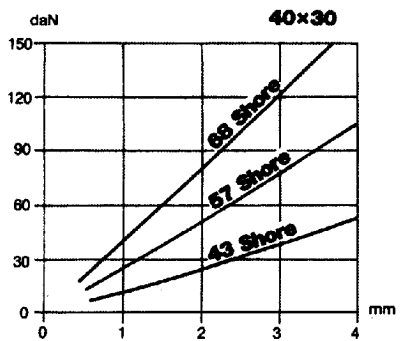
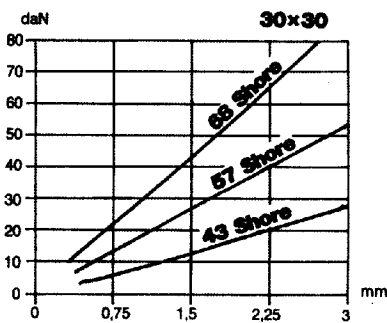
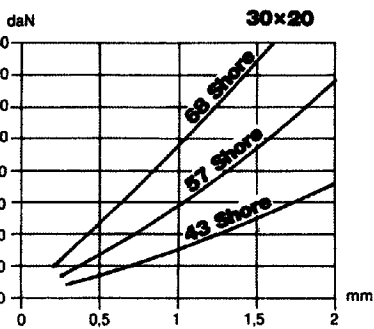
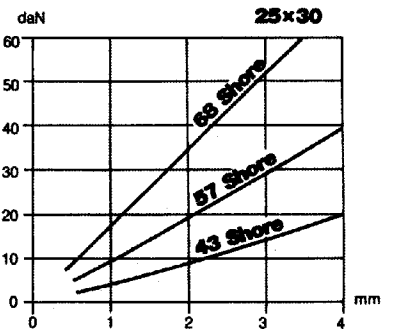
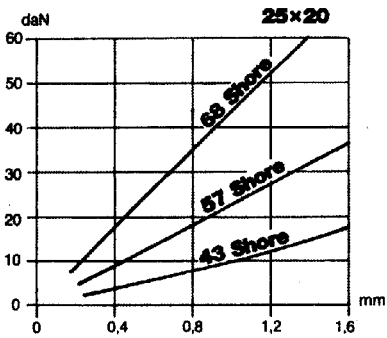
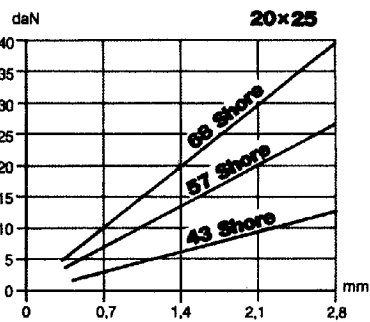
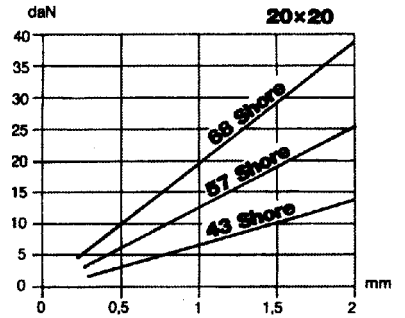
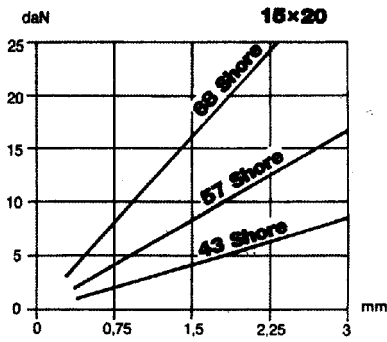
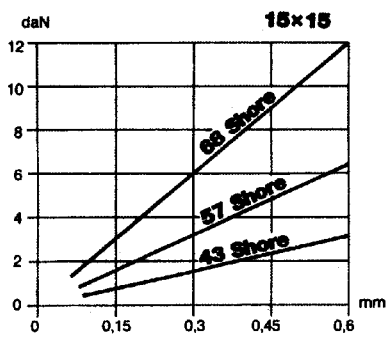
D ₁	H ₁	f [mm]	F _v [daN]		
			43Sh	57Sh	68Sh
		0,4	0,7	1,6	4,5
8	8	0,8	1,5	3,5	9
		1,2	2,5	5,5	14,5
		0,6	1,2	2,5	7
10	10	1,2	2,5	6	14,5
		1,6	3,5	8	20,5
		0,4	3,5	7,5	21
15	8	0,8	7,5	15,5	45
		1,2	12	25	74,5
		0,8	2	4,5	12,5
15	15	1,5	4	9,5	22,5
		2,5	7,5	17	40
		1	5,5	13,5	28
20	15	2	11,5	28,5	60
		2,5	15	37	77,5
		1	3,5	8,5	18
20	20	2,5	9	22,5	47,5
		3,5	13	32,5	70
		1	9,5	23	48
25	15	1,5	14,5	36	74,5
		2,5	26	64,5	134
		1	5,5	14	29,5
25	20	2,5	15	37	78
		3,5	22	54	114,5
		1	16,5	29	89
30	15	2	46	80	195
		2,5	61	104,5	256
		1	10,5	21	49
30	20	2,5	29	57	131,5
		3,5	43	84	194,5
30	30	1,5	8	17,5	39,5
		3	17	36,5	81,5
		5,3	31,5	67,5	152
40	30	1,5	16	33,5	74,5
		3	33	67	155,5
		5,3	62	130	291
40	40	2	13,5	30,5	67
		5	36	78	176,5
		7	53	116	256,5
		1	44	89,5	183
50	20	2	94,5	191	390
		3	153,5	308,5	627

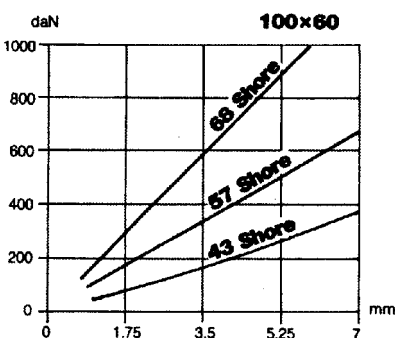
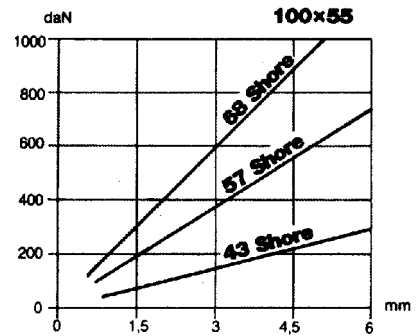
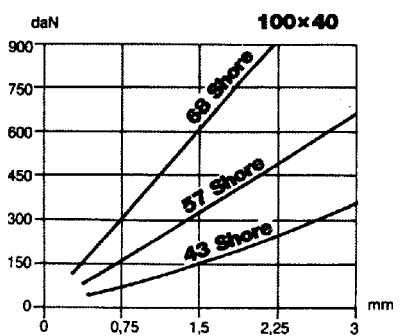
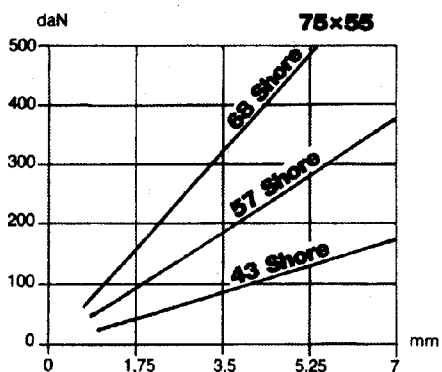
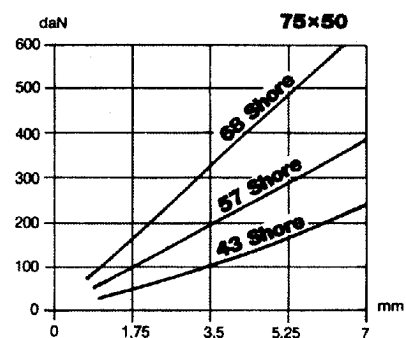
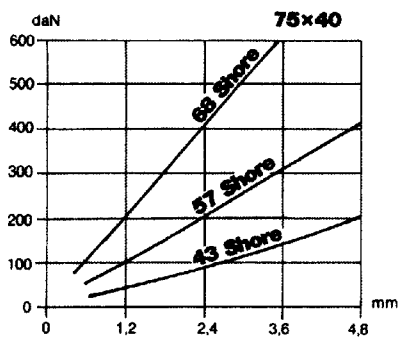
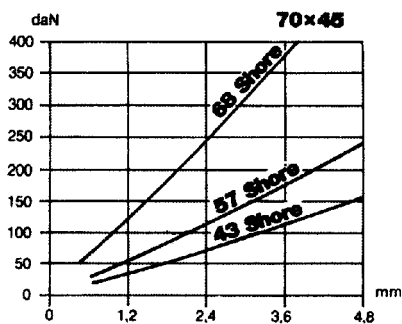
D ₁	H ₁	f [mm]	F _v [daN]		
			43Sh	57Sh	68Sh
		1,5	27,5	60	126
50	30	3	58	125,5	263
		4,5	91,5	198	414,5
		3	35	78,5	167
50	40	6	74,5	167	354
		8	104,5	232,5	493
		2	46	101	212,5
70	45	5	122,5	210	563
		8	210,5	458	961
		2	69	147,5	307,5
75	40	4	145,5	247,5	646,5
		7	279,5	590,5	1227,5
		1,5	29	64,5	137
75	55	4,5	90,5	201,5	427,5
		7,5	158,5	352	743,5
		2	176	358	734
100	40	4	378,5	765	1560
		6	614	1233,5	2500
		3	130	280	586,5
100	55	6	276,5	591,5	1234
		9	442,5	942,5	1956
		3	110	234	504,5
100	60	6	231,5	502	1054
		10,5	440	949	1984,5
		6	155	346	734
100	75	12	333,5	741	1568
		16,5	487,5	1077,5	2279
		3	414,5	915	1713,5
150	55	6	892	1969,5	3659,5
		9	1452	3204,5	5902,5
		3	336	745	1422,5
150	60	7,5	925	2046,5	3771,5
		10,5	1391,5	3075	5775
		4	282,5	634,5	1259,5
150	75	10	771	1726	3401
		14	1152	2573,5	5042,5
		6	540,5	1204	2504,5
200	100	12	1150	2550	5302
		18	1846,5	4073,5	8467

LOAD CHARACTERISTICS – TYPE 2

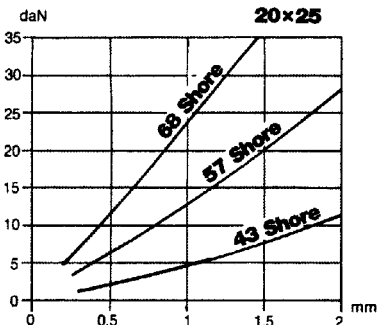
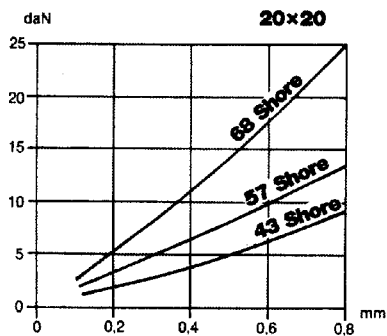
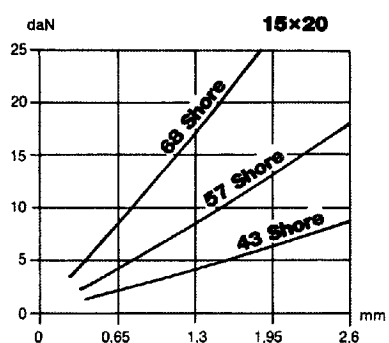
ZATĚŽOVACÍ CHARAKTERISTIKY – TYP 2

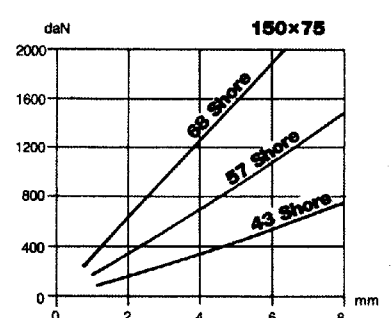
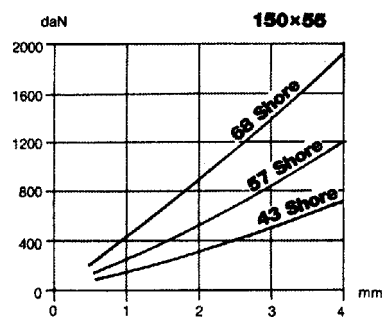
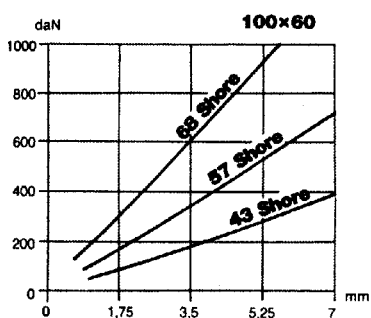
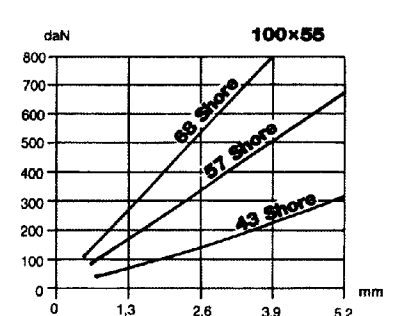
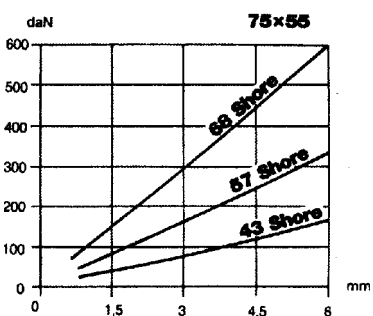
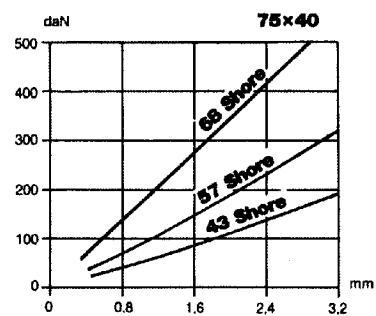
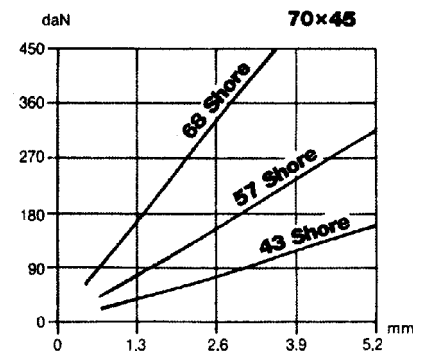
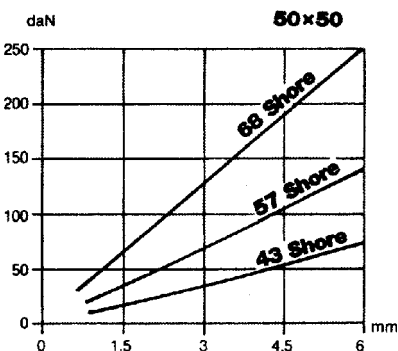
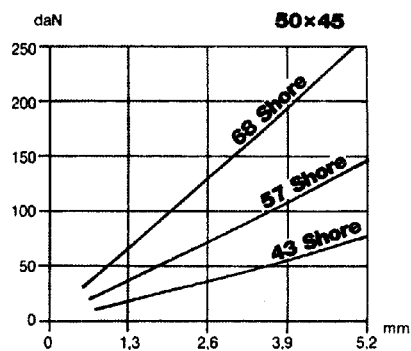
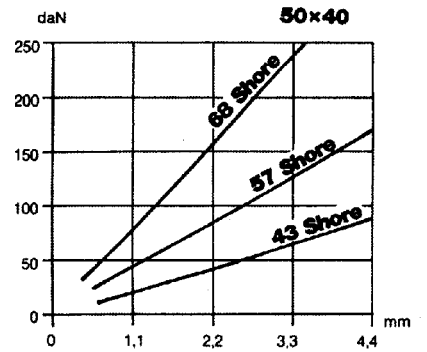
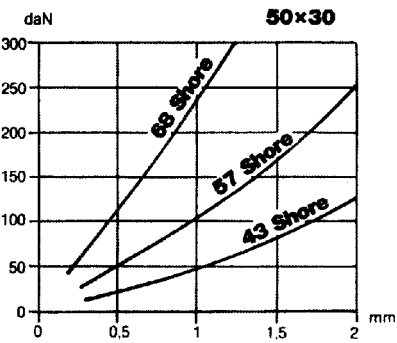
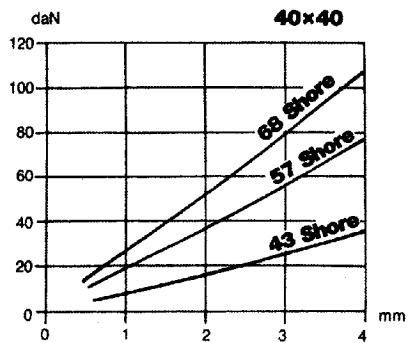
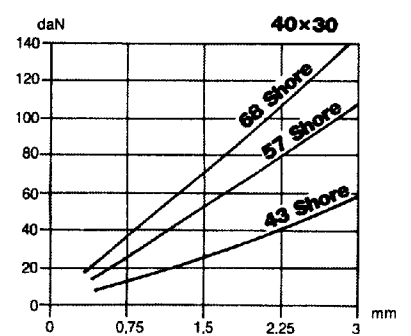
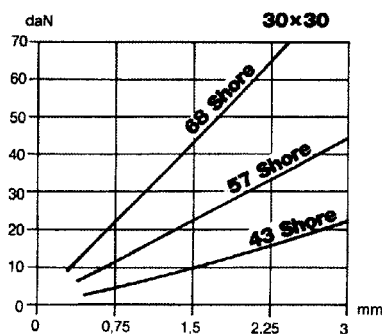
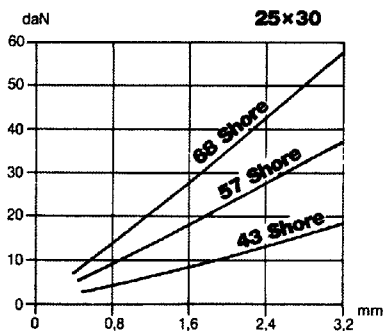
НАГРУЗОЧНЫЕ ХАРАКТЕРИСТИКИ – ТИП 2





LOAD CHARACTERISTICS – TYPE 3
ZATĚŽOVACÍ CHARAKTERISTIKY – TYP 3
НАГРУЗОЧНЫЕ ХАРАКТЕРИСТИКИ – ТИП 3



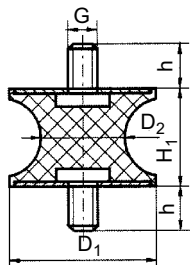


CYLINDRICAL VIBRATION DAMPERS NONSTANDARD - FULL

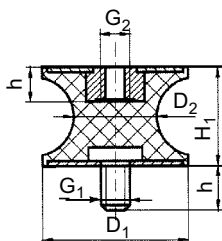
VÁLCOVÉ PRUŽINY NESTANDARDNÍ - PLNÉ

ЦИЛИНДРИЧЕСКИЕ АМОРТИЗАТОРЫ НЕСТАНДАРТНЫЕ - СКВОЗНЫЕ

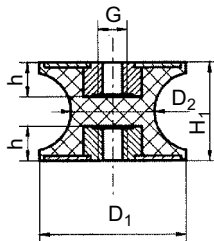
Type TP1



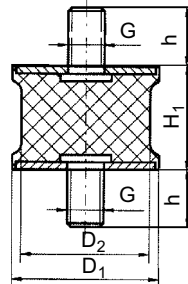
Type TP2



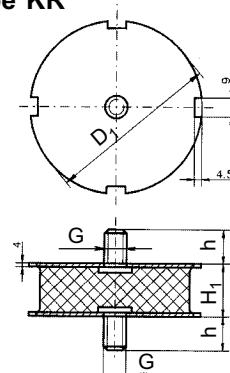
Type TP3



Type SP



Type KR



D ₁	D ₂	H ₁	Thread 1 (Gxh) Závit 1 (Gxh) Винт 1 (Gxh)	Thread 2 (Gxh) Závit 2 (Gxh) Винт 2 (Gxh)	Type Typ Тип
10	4,5	8	M 3x 6	-	TP1
10	4,5	8	M 3x 6	M 3x 3	TP2
10	4,5	8	M 3x 3	-	TP3
10	8	10	M 4x10	-	TP1
10	8	10	M 4x10	M 4x 4	TP2
10	8	10	M 4x 4	-	TP3
15	8,5	15	M 4x10	-	TP1
15	8,5	15	M 4x10	M 4x 4	TP2
15	8,5	15	M 4x 4	-	TP3
15	12	15	M 4x10	-	TP1
15	12	15	M 4x10	M 4x 4	TP2
15	12	15	M 4x 4	-	TP3
20	12	30	M 6x18	-	TP1
20	12	30	M 6x18	M 6x 6	TP2
20	12	30	M 6x 6	-	TP3
20	14	15	M 4x10	-	TP1
20	14	15	M 4x10	M 4x 4	TP2
20	14	15	M 4x 4	-	TP3
20	14	19	M 6x18	-	TP1
20	14	19	M 6x18	M 6x 6	TP2
20	14	19	M 6x 6	-	TP3
20	14	30	M 4x10	-	TP1
20	14	30	M 4x10	M 4x 4	TP2
20	14	30	M 4x 4	-	TP3
25	18	20	M 8x23	-	TP1
25	18	20	M 8x23	M 8x 8	TP2
25	18	20	M 8x 8	-	TP3
25	20	20	M 6x10	-	TP1
25	20	20	M 6x10	M 6x 6	TP2
25	20	20	M 6x 6	-	TP3
30	18	25	M 6x15	-	TP1
30	18	25	M 6x15	M 6x 6	TP2
30	18	25	M 6x 6	-	TP3
30	19,5	41	M 8x20	-	TP1

D ₁	D ₂	H ₁	Thread 1 (Gxh) Závit 1 (Gxh) Винт 1 (Gxh)	Thread 2 (Gxh) Závit 2 (Gxh) Винт 2 (Gxh)	Type Typ Тип
30	19,5	41	M 8x20	M 8x 8	TP2
30	19,5	41	M 8x 8	-	TP3
30	22	20	M 8x23	-	TP1
30	22	20	M 8x23	M 8x 8	TP2
30	22	20	M 8x 8	-	TP3
30	25	20	M 8x23	-	TP1
30	25	20	M 8x23	M 8x 8	TP2
30	25	20	M 8x 8	-	TP3
40	20	48	M 8x23	-	TP1
40	20	48	M 8x23	M 8x 8	TP2
40	20	48	M 8x 8	-	TP3
40	25	30	M 8x23	-	TP1
40	25	30	M 8x23	M 8x 8	TP2
40	25	30	M 8x 8	-	TP3
40	33	30	M 8x23	-	TP1
40	33	30	M 8x23	M 8x 8	TP2
40	33	30	M 8x 8	-	TP3
46	40	25	M10x28	-	TP1
46	40	25	M10x28	M10x10	TP2
46	40	25	M10x10	-	TP3
50	42	30	M10x28	-	TP1
50	42	30	M10x28	M10x10	TP2
50	42	30	M10x10	-	TP3
55	44	45	M 8x28	-	TP1
55	44	45	M 8x28	M 8x 8	TP2
55	44	45	M 8x 8	-	TP3
57	25	44	M10x28	-	TP1
57	25	44	M10x28	M10x10	TP2
57	25	44	M10x10	-	TP3
57	25	45	M 8x20	-	TP1
57	25	45	M 8x20	M 8x 8	TP2
57	25	45	M 8x 8	-	TP3
57	44	45	M10x28	-	TP1
57	44	45	M10x28	M10x10	TP2

Note: Thread 2 = Thread 1 unless otherwise specified. / Poznámka: Závit 2 = Závit 1 pokud není uvedeno jinak. / Заметка: Винт 2 = Винт 1, если не установлено иначе.

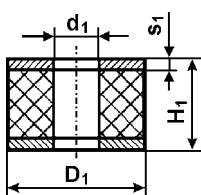
D ₁	D ₂	H ₁	Thread 1 (Gxh) Závit 1 (Gxh) Винт 1 (Gxh)	Thread 2 (Gxh) Závit 2 (Gxh) Винт 2 (Gxh)	Type Typ Тип
57	44	45	M10x10	-	TP3
57	45	44	M10x28	-	TP1
57	45	44	M10x28	M10x10	TP2
57	45	44	M10x10	-	TP3
60	49	60	M10x28	-	TP1
60	49	60	M10x28	M10x10	TP2
60	49	60	M10x10	-	TP3
70	45	53	M12x28	-	TP1
70	45	53	M12x28	M12x12	TP2
70	45	53	M12x12	-	TP3
95	80	75	M16x41	-	TP1
95	80	75	M16x41	M16x16	TP2
95	80	75	M16x16	-	TP3
180	148	75	M20x34	-	TP1

D ₁	D ₂	H ₁	Thread 1 (Gxh) Závit 1 (Gxh) Винт 1 (Gxh)	Thread 2 (Gxh) Závit 2 (Gxh) Винт 2 (Gxh)	Type Typ Тип
180	148	75	M20x34	M20x20	TP2
180	148	75	M20x20	-	TP3
180	150	75	M20x45	-	TP1
180	150	75	M20x45	M20x20	TP2
180	150	75	M20x20	-	TP3
26	22	22	M8x10	M8x18	SP
40	35	28	M10x16	M10x20	SP
46	40	25	M10x28	M10x28	SP
75	70	40	M12x37	M12x37	SP
100	95	55	M16x41	M16x41	SP
100	95	75	M16x45	M16x45	SP
105	-	55	M16x30	M16x30	KR
105	-	40	M16x30	M16x25	KR

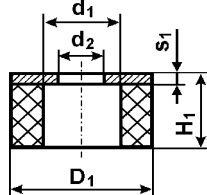
Note: Thread 2 = Thread 1 unless otherwise specified. / **Poznámka:** Závit 2 = Závit 1 pokud není uvedeno jinak. / **Заметка:** Винт 2 = Винт 1, если не установлено иначе.

CYLINDRICAL VIBRATION DAMPERS NONSTANDARD - PERFORMATED VÁLCOVÉ PRUŽINY NESTANDARDNÍ - PRŮCHOZÍ ЦИЛИНДРИЧЕСКИЕ АМОРТИЗАТОРЫ НЕСТАНДАРТНЫЕ - МАССИВНЫЕ

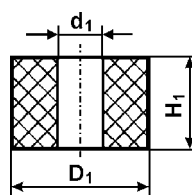
Type GH



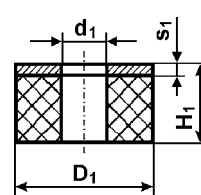
Type GK



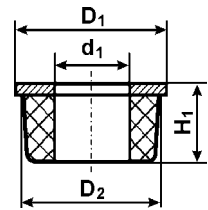
Type GP



Type IS



Type RB



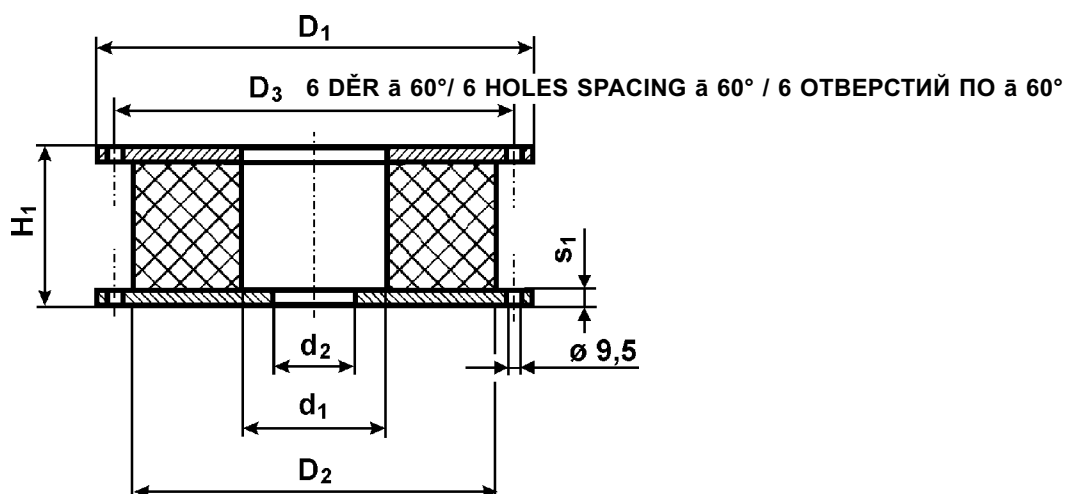
D ₁	D ₂	d ₁	d ₂	H ₁	S ₁	Type Typ Тип
15	-	6	-	25	2	GH
20	-	6	-	25	2	GH
40	-	13	-	20	3	GH
40	-	13	-	30	3	GH
40	-	13	-	40	3	GH
50	-	13	-	20	3	GH
50	-	17	-	40	3	GH
50	-	17	-	50	3	GH
50	-	21	-	15	3	GH
50	-	21	-	30	3	GH
60	-	21	-	50	4	GH
75	-	25	-	55	3	GH

D ₁	D ₂	d ₁	d ₂	H ₁	S ₁	Type Typ Тип
80	-	21	-	30	3	GH
100	-	21	-	40	4	GH
100	-	31	-	40	4	GH
100	-	33	-	75	5	GH
120	-	41	-	40	5	GH
120	-	51	-	40	5	GH
150	-	51	-	100	6	GH
200	-	32	-	100	8	GH
200	-	61	-	100	8	GH
30	-	16	9	16	3	GK
40	-	16	9	16	3	GK
40	-	17	9	20	3	GK

D ₁	D ₂	d ₁	d ₂	H ₁	S ₁	Тип Тип Тип
50	-	20	11	16	3	GK
50	-	22	11	20	3	GK
60	-	25	25	18	3	GK
60	-	25	11	20	4	GK
75	-	30	13	25	6	GK
80	-	32	13	20	4	GK
100	-	40	13	25	6	GK
100	-	60	33	30	6	GK
125	-	50	17	25	6	GK
8,5	-	3,2	-	3,5	-	GP
13	-	6,5	-	12	-	GP
17,5	-	9	-	16	-	GP
19	-	13	-	19	-	GP
20	-	8,5	-	15	-	GP
25	-	8,5	-	25	-	GP
25	-	10,5	-	0,25	-	GP
25	-	10,5	-	15	-	GP
28	-	8	-	16	-	GP
28	-	10,5	-	50	-	GP
30	-	16	-	40	-	GP
32	-	13,5	-	32	-	GP
40	-	0,9	-	30	-	GP
40	-	12	-	25	-	GP
40	-	12	-	35	-	GP
40	-	12	-	65	-	GP
40	-	13	-	30	-	GP
40	-	13,5	-	32	-	GP
40	-	13,5	-	40	-	GP
40	-	13,5	-	40	-	GP
40	-	13,5	-	50	-	GP
40	-	17	-	30	-	GP
47	-	20	-	50	-	GP
48	-	17	-	100	-	GP
50	-	10	-	45	-	GP
50	-	14	-	80	-	GP
50	-	17	-	25	-	GP
50	-	17	-	32	-	GP
50	-	17	-	40	-	GP
50	-	17	-	50	-	GP
50	-	17	-	63	-	GP
50	-	17	-	80	-	GP
50	-	20	-	38	-	GP
50	-	24	-	50	-	GP
50	-	24,8	-	50	-	GP
53	-	32,5	-	100	-	GP
58	-	17	-	100	-	GP
60	-	20	-	40	-	GP
70	-	40	-	40	-	GP

D ₁	D ₂	d ₁	d ₂	H ₁	S ₁	Тип Тип Тип
75	-	18	-	40	-	GP
80	-	15	-	50	-	GP
80	-	20	-	27	-	GP
80	-	20	-	40	-	GP
80	-	21	-	30	-	GP
80	-	21	-	100	-	GP
80	-	25	-	40	-	GP
80	-	25	-	82	-	GP
80	-	30	-	35	-	GP
80	-	40	-	30	-	GP
90	-	30	-	45	-	GP
100	-	21	-	40	-	GP
100	-	25	-	40	-	GP
100	-	25	-	70	-	GP
100	-	26	-	40	-	GP
100	-	30	-	35	-	GP
100	-	33	-	40	-	GP
100	-	33	-	75	-	GP
100	-	40	-	70	-	GP
100	-	70	-	40	-	GP
120	-	25	-	40	-	GP
120	-	40	-	40	-	GP
120	-	50	-	40	-	GP
125	-	35	-	125	-	GP
125	-	50	-	125	-	GP
150	-	45	-	180	-	GP
150	-	51	-	100	-	GP
160	-	33	-	160	-	GP
200	-	33	-	200	-	GP
200	-	61	-	100	-	GP
250	-	60	-	200	-	GP
40	-	10	-	10	2	IS
62	-	6	-	14	3	IS
80	-	30	-	21	2	IS
100	-	19	-	56	3	IS
100	-	21	-	40	4	IS
100	-	25	-	40	4	IS
100	-	30	-	21	4	IS
100	-	30	-	60	4	IS
120	-	25	-	40	4	IS
120	-	30	-	21	4	IS
150	-	40	-	32	4	IS
42	40	18	-	23	-	RB
62	60	21	-	33	-	RB
72	70	21	-	33	-	RB
82	80	25	-	40	-	RB
102	100	32	-	54	-	RB
122	120	38	-	46	-	RB

CYLINDRICAL VIBRATION DAMPERS NONSTANDARD – DISC VÁLCOVÉ PRUŽINY NESTANDARDNÍ – KOTOUČOVÉ ЦИЛИНДРИЧЕСКИЕ АМОРТИЗАТОРЫ НЕСТАНДАРТНЫЕ – ДИСКОВЫЕ



D_1	D_2	D_3	d_1	d_2	H_1	s_1	Shape Tvar Модель	Type Typ Тип
195	150	175	50	30	44	2	17.13	.13
210	175	190	50	30	44	2	18.13	.13
240	200	225	90	35	46	2	19.13	.13
254	220	-	90	35	46	2	20.13	.13
275	235	255	75	35	48	3	21.13	.13
315	270	295	75	40	48	3	23.13	.13

Note:

Metal parts for shapes 20.13, 21.13, 23.13 are supplied by the customer according to the producer's drawing. Vibration dampers are manufactured out of a rubber grade with hardness 50 ShA.

Poznámka:

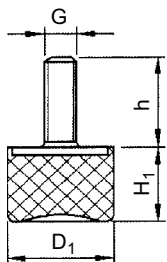
Kovové díly pro tvary 20.13, 21.13, 23.13 si dodává zákazník dle výkresu výrobce. Pružiny se vyrábějí z pryže o tvrdosti 50 ShA.

Заметка:

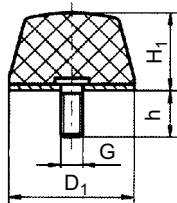
Металлические части для моделей 20.13, 21.13, 23.13 подает заказчик по чертежам изготовителя. Цилиндрические амортизаторы изготавливаются из резины твердостью 50 Шор А.

STOP DAMPERS – CIRCULAR NÁRAZNÍKOVÉ PRUŽINY – KRUHOVÉ БУФЕРЫ – КОНИЧЕСКИЕ

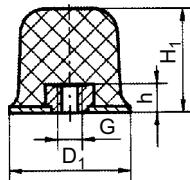
Type DS



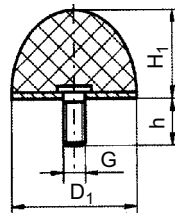
Type KD



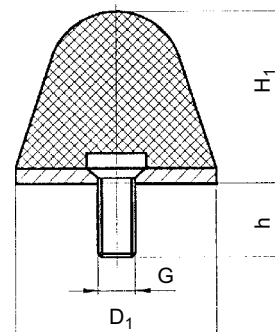
Type KE



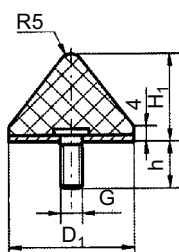
Type KG



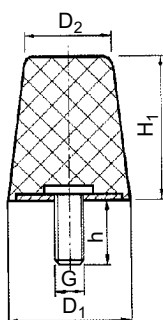
Type .16



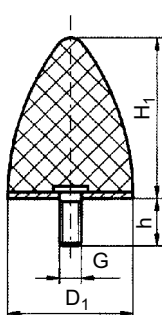
Type KK



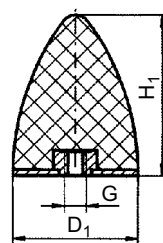
Type KH



Type KP-D



Type KP-E

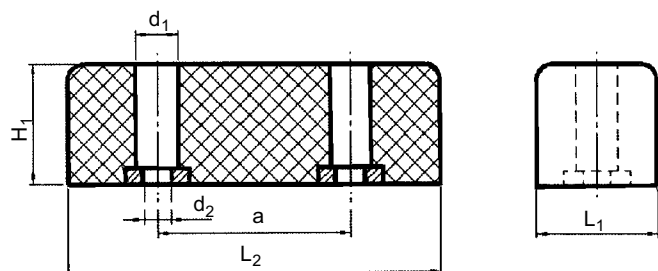


D ₁	D ₂	H ₁	Thread 1 (Gxh) Závit 1 (Gxh) Винт 1 (Gxh)	ShA Шор А	Shape Tvar Модель	Type Typ Тип
15	-	14	M 4x13	55	-	DS
25	-	18,5	M 6x18	55	-	DS
40	-	28	M 8x10	55	-	DS
50	-	28	M10x33	55	-	DS
70	-	43	M10x28	55	-	DS
75	-	37	M12x37	55	-	DS
18	-	18	M 6x10	50	77.16	.16
25	-	25	M 6x12	50	78.16	.16
35	-	35	M 8x16	50	76.16	.16
50	-	50	M10x20	50	79.16	.16
70	-	70	M12x24	50	80.16	.16
12	-	12	M 4x10	55	-	KD
14	-	6,3	M 4x 4	55	-	KD
25	-	12	M 6x18	55	-	KD
25	-	14	M 4x10	55	-	KD
25	-	17	M 6x18	55	-	KD
45	-	21	M 8x46	55	-	KD
50	-	18	M10x28	55	-	KD
50	-	50	M10x28	55	-	KD
125	-	45	M16x45	55	-	KD
50	-	35	M10x10	55	-	KE
25	-	15	M 6x18	55	-	KG
38	30	35	M10x27	55	-	KH
43	30	35	M10x27	55	-	KH
43	30	50	M10x25	55	-	KH
24	-	17	M 8x20	55	-	KK
25	-	16	M 8x20	55	-	KK
40	-	24	M 8x28	55	-	KK
50	-	28	M 8x28	55	-	KK
50	-	45	M10x35	55	-	KK
10	-	10	M 5x12	55	-	KP-D

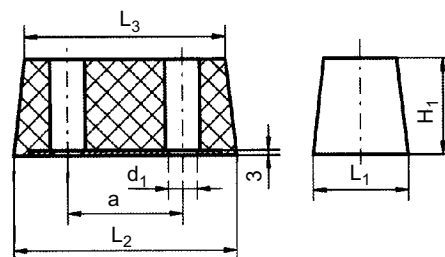
D ₁	D ₂	H ₁	Thread 1 (Gxh) Závit 1 (Gxh) Винт 1 (Gxh)	ShA Шор А	Shape Tvar Модель	Type Typ Тип
20	-	15	M 6x10	55	-	KP-D
20	-	24	M 6x18	55	-	KP-D
25	-	16	M 6x18	55	-	KP-D
25	-	20	M 6x18	55	-	KP-D
30	-	30	M 8x20	55	-	KP-D
30	-	36	M 8x20	55	-	KP-D
35	-	40	M 8x23	55	-	KP-D
50	-	50	M10x28	55	-	KP-D
50	-	61	M 8x28	55	-	KP-D
50	-	67	M 8x33	55	-	KP-D
50	-	68	M10x38	55	-	KP-D
70	-	58	M12x32	55	-	KP-D
75	-	89	M12x37	55	-	KP-D
95	-	80	M16x42	55	-	KP-D
118	-	77	M16x41	55	-	KP-D
10	-	10	M 5	55	-	KP-E
20	-	15	M 6	55	-	KP-E
20	-	24	M 6	55	-	KP-E
25	-	16	M 6	55	-	KP-E
25	-	20	M 6	55	-	KP-E
30	-	30	M 8	55	-	KP-E
30	-	36	M 8	55	-	KP-E
35	-	40	M 8	55	-	KP-E
50	-	50	M10	55	-	KP-E
50	-	61	M 8	55	-	KP-E
50	-	67	M 8	55	-	KP-E
50	-	68	M10	55	-	KP-E
70	-	58	M12	55	-	KP-E
75	-	89	M12	55	-	KP-E
95	-	80	M16	55	-	KP-E
118	-	77	M16	55	-	KP-E

STOP DAMPERS – PRISMATIC NÁRAZNÍKOVÉ PRUŽINY – HRANOLOVÉ БУФЕРЫ – ПРИЗМАТИЧЕСКИЕ

Type TAB

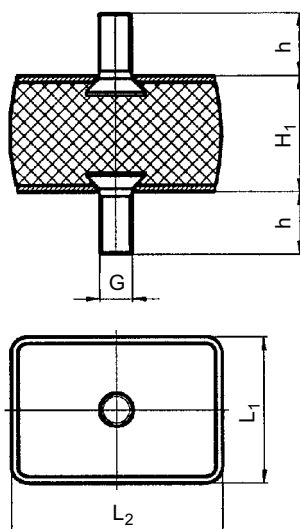


Type RP-0G

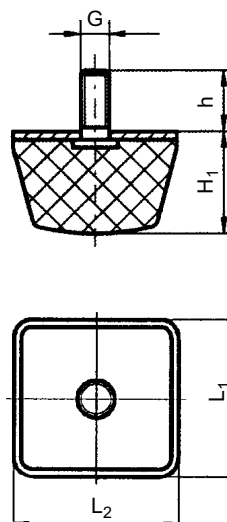


L ₁	L ₂	L ₃	H ₁	d ₁	d ₂	a	Number of holes Počet otvorů Число отверстий	Thread 1 (Gxh) Závit 1 (Gxh) Винт 1 (Gxh)	Type Typ Тип
40	125	-	15	19,7	8	60	2	-	TAB
40	125	-	40	19,8	8	60	2	-	TAB
43	125	-	50	20,3	8	60	2	-	TAB
43	125	-	70	19,8	8	60	2	-	TAB
52	200	-	60	26	10,5	120	2	-	TAB
52	200	-	80	26	10,5	120	2	-	TAB
52	300	-	60	26	10,5	115	3	-	TAB
52	300	-	80	26	10,5	115	3	-	TAB
52	400	-	60	26	10,5	165	3	-	TAB
52	400	-	80	26	10,5	165	3	-	TAB
60	530	-	35	26	12,5	157	4	-	TAB
60	150	136	60	11	-	70	2	M10x32	RP-0G
100	200	168	100	13	-	90	2	M12x36	RP-0G

Type .01



Type KD



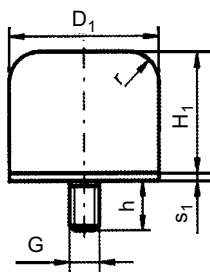
L ₁	L ₂	H ₁	Thread 1 (Gxh) Závit 1 (Gxh) Винт 1 (Gxh)	ShA Шор А	Shape Tvar Модель	Type Typ Тип
40	60	35	M10x18	50	07.01	.01
60	90	38	M12x23	60	14.01	.01
50	50	20	M10x28	55	-	KD
80	80	27	M12x37	55	-	KD

STOP DAMPERS – GP

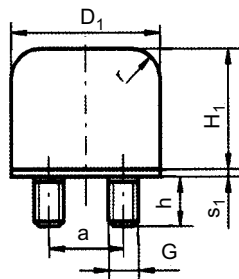
NÁRAZNÍKOVÉ PRUŽINY – GP

БУФЕРЫ – GP

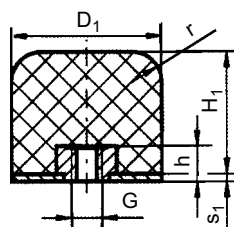
Type GP-1G



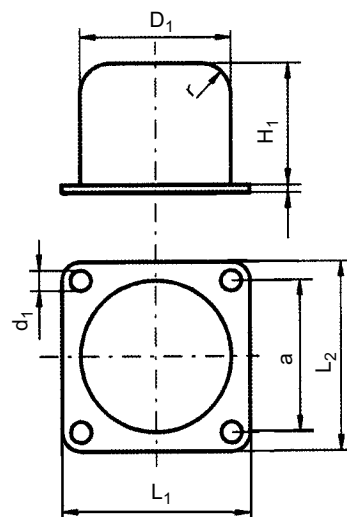
Type GP-2G



Type GP-1I

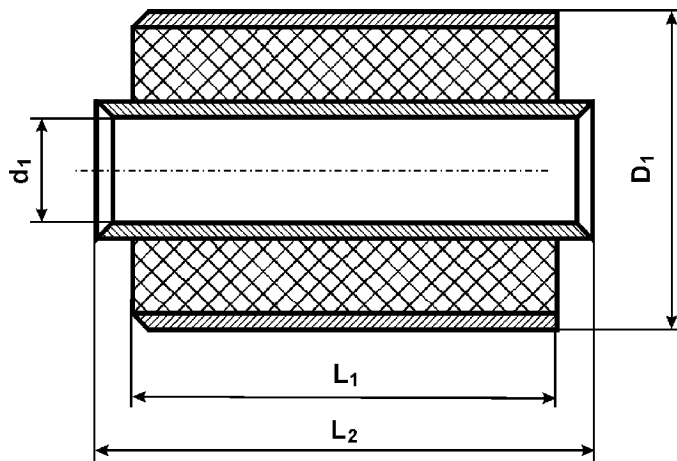


Type GP-QP



D ₁	H ₁	L ₁	L ₂	d ₁	a	Thread 1 (Gxh) Závit 1 (Gxh) Винт 1 (Gxh)	r	s ₁	Type Typ Тип
40	32	-	-	-	-	M 8x23	8	2	GP-1G
40	32	-	-	-	-	M 8x 8	8	2	GP-1I
40	32	50	50	5,5	40	-	8	2	GP-QP
50	40	-	-	-	-	M10x28	10	2	GP-1G
50	40	-	-	-	-	M10x10	10	2	GP-1I
50	40	63	63	6,5	50	-	10	3	GP-QP
63	50	-	-	-	-	M10x28	12,5	3	GP-1G
63	50	-	-	-	-	M10x10	12,5	3	GP-1I
63	50	80	80	6,5	63	-	12,5	4	GP-QP
80	63	-	-	-	-	M12x37	18	3	GP-1G
80	63	-	-	-	-	M12x12	18	3	GP-1I
80	63	100	100	9	80	-	18	5	GP-QP
100	80	-	-	-	-	M12x36	20	4	GP-1G
100	80	-	-	-	-	M12x12	20	4	GP-1I
100	80	-	-	-	50	M12x36	20	4	GP-2G
100	80	125	125	9	100	-	20	6	GP-QP
125	100	-	-	-	-	M16x36	25	4	GP-1G
125	100	-	-	-	-	M16x16	25	4	GP-1I
125	100	-	-	-	63	M16x36	25	4	GP-2G
125	100	160	160	11	125	-	25	6	GP-QP
160	125	-	-	-	-	M16x44	32	6	GP-1G
160	125	-	-	-	-	M16x16	32	6	GP-1I
160	125	-	-	-	80	M16x44	32	6	GP-2G
160	125	200	200	11	160	-	32	8	GP-QP
200	160	-	-	-	-	M20x44	40	6	GP-1G
200	160	-	-	-	-	M20x18	40	6	GP-1I
200	160	-	-	-	100	M20x44	40	6	GP-2G
200	160	250	250	13	200	-	40	8	GP-QP

COVER DAMPERS
POUZDROVÉ PRUŽINY
ВТУЛОЧНЫЕ ФМОРТИЗАТОРЫ



d_1	D_1	L_1	L_2	Shape Tvar Модель
13	30	40	40	-
14	27	40	48	-
14	30	25	28	-
14	30	45	50	06.21
14	30	67	76	-
15,5	55	30	16	-
20	45	60	63	-
20	55	90	94	-
25	40	20	20	-
25	40	30	30	-
25	50	30	34	-
25	50	65	68	-
30	60	60	68	-