

TEPLOTNE ODOLNÉ KOLESÁ

Samostatné kolesá - séria CL

Použitie - veľmi vhodné do prostredia s teplotou do +150°C

/nosnosť 55 - 100 kg/







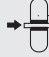

253

Kolesá zo šedej liatiny, klzné uloženie /K/, teplotne odolné /od -50°C do +280°C

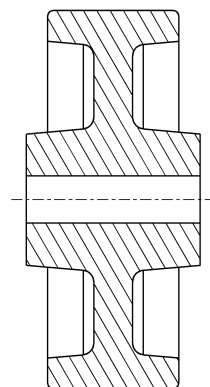
Räder aus Grauguss mit Gleitlager /K/, Dauerbeanspruchung ca./-50°C +280°C

Wheels of gray cast iron /CL/, with plain bearing /K/

Resistant to high temperature for permanent stressing approx./-50°C +280°C

Samostatné koleso Rad Wheel						
CL-K070/12	070	25	≡	12,1	32	55
CL-k100/12	100	33	≡	12,1	44	100

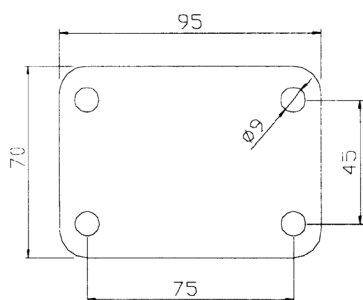
Kolesá s klzným
uložením



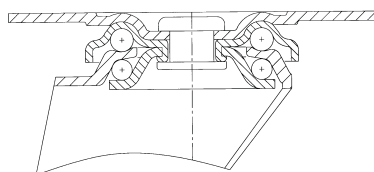
≡

Označenie: CL-K100

Transportné kolesá série 322, 332, 423, 433 s kolesami CL /nosnosť 55-100 kg/



Upevňovacia príruha štvorhranná-typ P3
na otočné vidlice série 323, 333

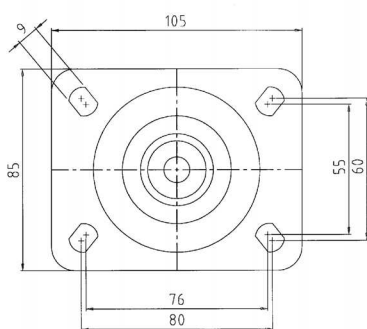


Otočná vidlica typ 322

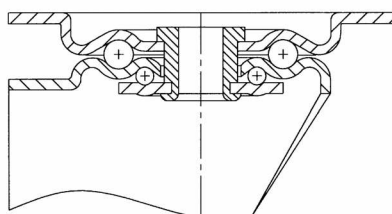
Otočná vidlica z oceleového plechu, pozinkovaná, s dvojitém guľčkovým vencom v smerovej otoči, os kolesa zaistená skrutkou

Gehäuse aus Stahlblech, verzinkt-chromatisiert, mit zweireihigem Kugellager im Gabelkopf

Housing made of pressed steel zinc-chromatised, double ball bearing swivel head



Upevňovacia príruha štvorhranná-typ P4
na kolesá série 6423



Otočná vidlica 423










Otočná vidlica z oceleového plechu, pozinkovaná, s dvojitém guľčkovým vencom v smerovej otoči, os kolesa zaistená skrutkou

Gehäuse aus Stahlblech, verzinkt-chromatisiert, mit zweireihigem Kugellager im Gabelkopf

Housing made of pressed steel zinc-chromatised, double ball bearing swivel head












254

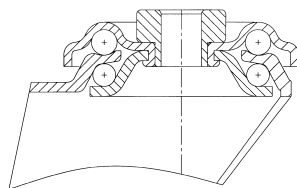
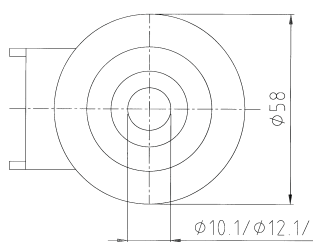
Otočné koleso Lenkrolle Swivel castor									
322 CL-K070	070	25	=	95x70	75x45	9	32	100	55
423 CL-K100	100	33	=	105x85	80x60	9	39	129	100



255

Pevné koleso Bockrolle Fixed castor									
332 CL-K070	070	25	=	95x70	75x45	9	32	100	55
433 CL-K100	100	33	=	95x70	80x60	9	39	129	100

Transportné kolesá série 352 s kolesami CL /nosnosť 200 kg/



Upevnenie na stredový otvor \varnothing 12,1
na otočné vidlice série 352








Otočná vidlica typ, 352

Otočná vidlica z oceleového plechu, pozinkovaná, s dvojitém guľičkovým vencom v smerovej otoči, os kolesa zaistená skrutkou

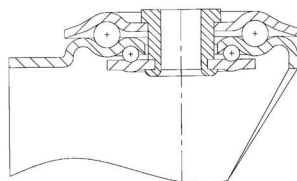
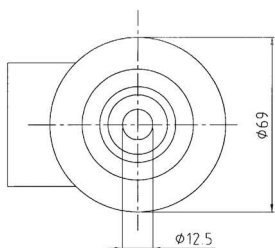
Gehäuse aus Stahlblech, verzinkt-chromatisiert, mit zweireihigem Kugellager im Gabelkopf

Housing made of pressed steel zinc-chromatised, double ball bearing swivel head



Otočné koleso Lenkrolle Swivel castor							
352 CL-K070	070	25	=	12,1	32	100	55

Transportné kolesá série 453, 453B s kolesami CPB č /nosnosť 200 kg/



Upevnenie na stredový otvor \varnothing 12,5
na otočné vidlice série 453








Otočná vidlica typ, 453

Otočná vidlica z oceleového plechu, pozinkovaná, s dvojitém guľičkovým vencom v smerovej otoči, os kolesa zaistená skrutkou

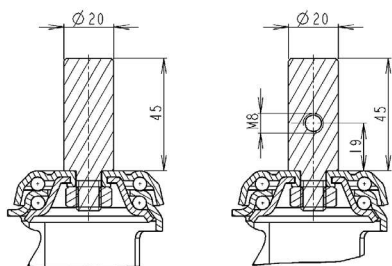
Gehäuse aus Stahlblech, verzinkt-chromatisiert, mit zweireihigem Kugellager im Gabelkopf

Housing made of pressed steel zinc-chromatised, double ball bearing swivel head



Otočné koleso Lenkrolle Swivel castor							
453 CL-K100	100	33	=	12,5	39	129	100

Transportné kolesá série 372, 473 s kolesami CL /nosnosť 55-100 kg/



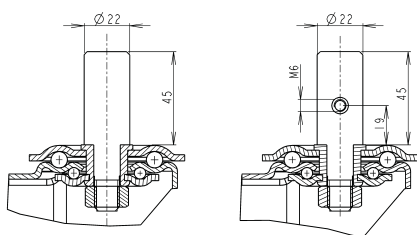
Upínanie na hladký čap Ø 20x45
s priečnym otvorom
označenie: 373.....H1

Upínanie na hladký čap Ø 20x45

Otočná vidlica z ocelového plechu, pozinkovaná, s dvojitým guľičkovým vencom v smerovej otoči, os kolesa zaistená skrutkou

Gehäuse aus Stahlblech, verzinkt-chromatisiert, mit zweireihigem Kugelkranz im Gabelkopf

Housing made of pressed steel zinchromatised, double ball bearing swivel head



Upínanie na hladký čap Ø 22x45
s priečnym otvorom
označenie: 473.....H1








Upínanie na hladký čap Ø 22x45

Otočná vidlica z ocelového plechu, pozinkovaná, s dvojitým guľičkovým vencom v smerovej otoči, os kolesa zaistená skrutkou

Gehäuse aus Stahlblech, verzinkt-chromatisiert, mit zweireihigem Kugellager im Gabelkopf

Housing made of pressed steel zin-chromatised, double ball bearing swivel head



Otočné koleso Lenkrolle Swivel castor								
372 CL-K070	070	25	=	20	45	32	100	55
473 CL-K100	100	33	=	22	45	39	129	100

DOPLNKY

DOPLNKY	Dotatok ku obj. č.	Dodávané v Ø kolies.
úprava do teploty 150°C	...SO	u všetkých priemerov

Samostatné kolesá - séria XJ

/nosnosť 200 kg/



259

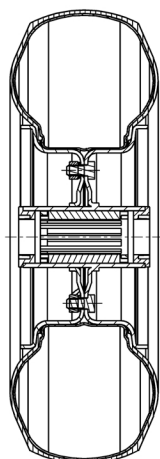
Disk kolesa z ocelového plechu, pozinkovaný, behúň - nafukovacia duša a plášť čiernej farby /č/, ložisko ihlové /V/, guľičkové /G/

Stahlscheibenräder, mit Luftbereifung Ausführung: veryinktchromatiert, mit Rollenlager /V/, Kugellager /G/

Pneumatic tread wheels with steel center, with roller bearing /V/, ball bearing /G/

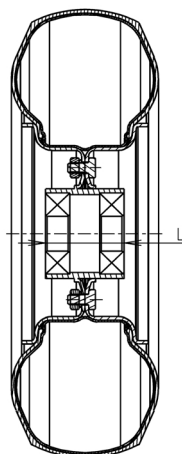
Samostatné koleso Rad Wheel			Rozmer pneumatiky	Tlak vzduchu /bar/						
XJ-V260/20č	260	85	3,00-4	2,5		20	75	-	-	200
XJ-G260/20č	260	85	3,00-4	2,5		20	55	50	-	200
XJ-G260/20č L2	260	85	3,00-4	2,5		20	55	50	5	200

Kolesá s ihlovým ložiskom



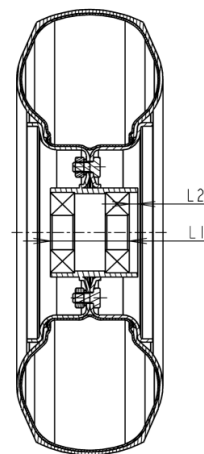
Označenie: XJ-V...

Kolesá s guľičkovým ložiskom



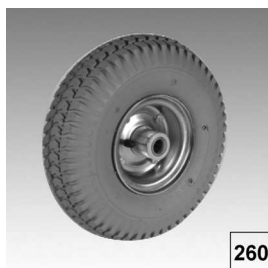
Označenie: XJ-G...

Kolesá s guľičkovým ložiskom



Označenie: XJ-G...L2

DOPLNKY

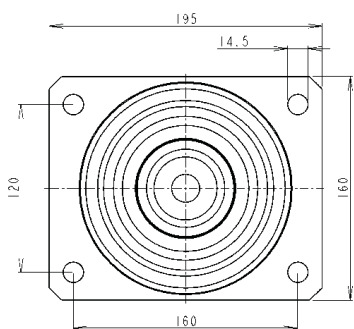


260

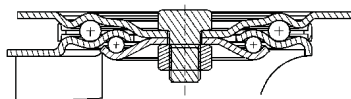
šedá gumová obruč

DOPLNKY	Dotatok ku obj. č.	Dodávané v Ø kolies.
šedá gumová obruč	...š	u všetkých priemerov

Transportné kolesá série 628, 638 s kolesami XJ /nosnosť 200 kg/



Upevňovacia príruha štvorhranná typ P8
na kolesá série 628, 638



Otočná vidlica typ 628






Otočná vidlica z ocelového plechu, pozinkovaná, s dvojitým guľčkovým vencom v smerovej otoči, os kolesa zaistená skrutkou

Gehäuse aus Stahlblech, verzinkt-chromatisiert, mit zweireihigem Kugelkranz im Gabelkopf

Housing made of pressed steel zinc-chromatised, double ball bearing swivel head














261

Otočné koleso Lenkrolle Swivel castor									
628 XJ-V260č	260	85		195x160	160x120	14,5	75	310	200
628 XJ-G260č	260	85		195x160	160x120	14,5	75	310	200



262

Pevné koleso Bockrolle Fixed castor									
638 XJ-V260č	260	85		195x160	160x120	14,5	75	310	200
638 XJ-G260č	260	85		195x160	160x120	14,5	75	310	200

Samostatné kolesá - séria XL







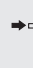




/nosnosť 300 kg/



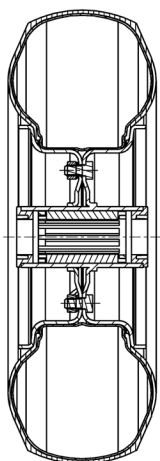
Disk kolesa z ocelového plechu, pozinkovaný, behúň - štandardná celogumová obruč /tvrdosť Shore A 80 +/-5/, čiernej farby /č/, ložisko ihlové /V/, guľočkové /G/

Stahlscheibenräder, mit Vollgummi-Reifen, Gummiqualitäten schwarz /č/, Ausführung: verzinkt-chromatiert, mit Rollenlager /V/, Kugellager /G/

Teel disc wheels with solid rubber tyre black /č/, finish: zincchromatiyed, with roller bearing /V/, ball bearing /G/

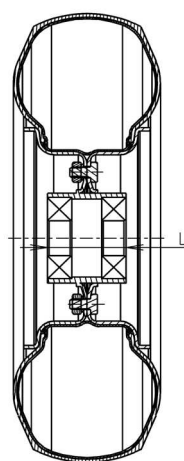
Samostatné koleso Rad Wheel								 kg
XL-V256/20č	256	76		20	75	-	-	300
XL-G256/20č	256	76		20	50	-	-	300
XL-G256/20č L2	256	76		20	50	-	5	300

Kolesá s ihlovým ložiskom



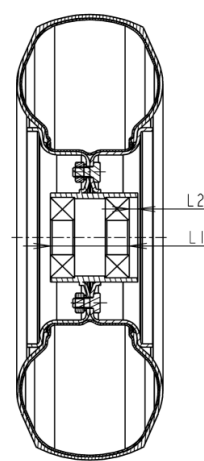
Označenie: XL-V....

Kolesá s guľočkovým ložiskom



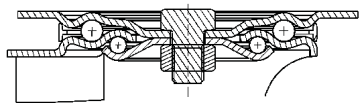
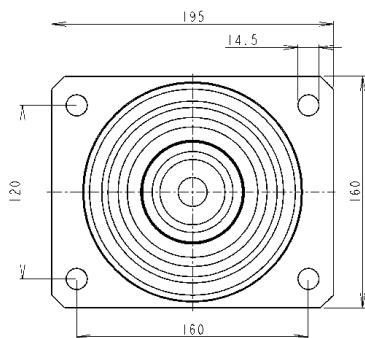
Označenie: XL-G....

Kolesá s guľočkovým ložiskom



Označenie: XL-G....L2

Transportné kolesá série 628, 638 s kolesami XL /nosnosť 300 kg/



Otočná vidlica z oceleového plechu, pozinkovaná, s dvojitým guľčkovým vencom v smerovej otoči, os kolesa zaistená skrutkou

Gehäuse aus Stahlblech, verzinkt-chromatisiert, mit zweireihigem Kugelkranz im Gabelkopf












Housing made of pressed steel zinc-chromatised, double ball bearing swivel head

Upevňovacia príručka štvorhranná typ P8
na kolesá série 628, 638

Otočná vidlica typ 628






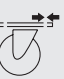







264

Otočné koleso Lenkrolle Swivel castor									
628 XL-V256	256	76		195x160	160x120	14,5	75	306	300
628 XL-G256	256	76		195x160	160x120	14,5	75	306	300



265

Pevné koleso Bockrolle Fixed castor									
638 XL-V256	256	76		195x160	160x120	14,5	75	306	300
638 XL-G256	256	76		195x160	160x120	14,5	75	306	300

Samostatné kolesá - série NJ










/nosnosť 75-200 kg/



Kolesá s nafukovacou dušou a plášt'om šedej farby /NJ/, disk z polypropylénu, guľičkové ložisko /g/, ihľové ložisko /V/ klzné uloženie /K/

Polypropylen Räder mit Luftbereifung, Kugellager /g/, Rollenlager /V/, Gleitlager /K/

Polypropylene wheel whit pneumatic tyred /NJ/, with ball bearing /g/, with roller, plain bearing /K/ it pneumatic tyred /NJ/ with ball bearing /G/

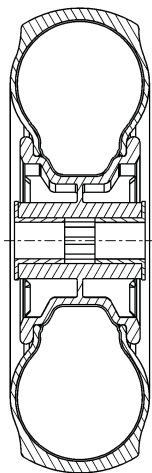
Samostatné koleso Rad Wheel			Rozmer pneumatiky	Tlak vzduchu /bar/				 kg
NJ-g200/8 š	200	50	2,50-4	2,5		8,5	60	75
NJ-K260/20 č	260	85	3,00-4	2,5		20	73	200
NJ-V260/20 č	260	85	3,00-4	2,5		20	73	200

DOPLNKY



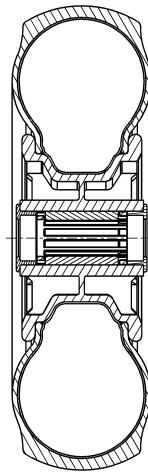
Šedá gumová obruč

Kolesá s klzným uložením



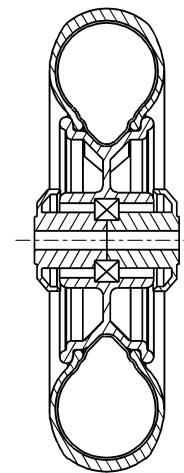
Označenie: NJ-K...

Kolesá s ihľovým ložiskom



Označenie: NJ-V...

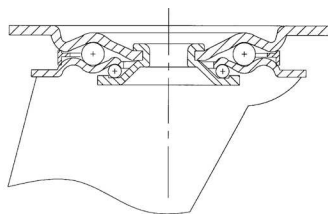
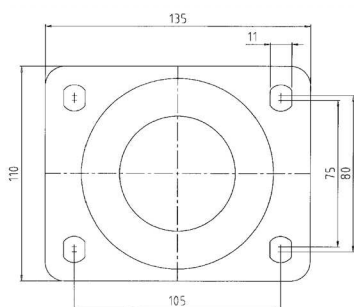
Kolesá s guľičkovým ložiskom



Označenie: NJ-g...

DOPLNKY	Dotatok ku obj. č.	Dodávané v Ø kolies.
šedá gumová obruč	...š	U kolies Ø 260

Transportné kolesá série 623, 633 s kolesami NJ /nosnosť 75 kg/



Otočná vidlica z oceleového plechu, pozinkovaná, s dvojitým guľíkovým vencom v smerovej otoči, os kolesa zaistená skrutkou

Gehäuse aus Stahlblech, verzinkt-chromatisiert, mit zweireihigem Kugelkranz im Gabelkopf

Housing made of pressed steel zinc-chromatised, double ball bearing swivel head

Upevňovacia príruha štvorhranná typ P6
na kolesá série 623, 633

Otočná vidlica typ 623



268

Otočné koleso
Lenkrolle
Swivel castor



kg

623 NJ-g200š

200

50



135x110

105x75

11

61

240

75



269

Pevné koleso
Bockrolle
Fixed castor



kg

623 NJ-g200š

200

50



135x110

105x75

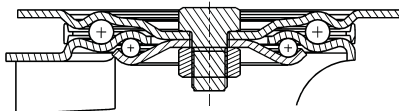
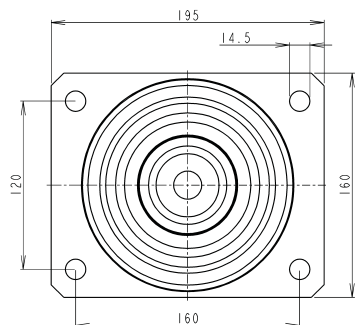
11

61

240

75

Transportné kolesá série 628, 638 s kolesami NJ /nosnosť 200 kg/



Otočná vidlica z oceľového plechu, pozinkovaná, s dvojitém guľíkovým vencom v smerovej otoči, os kolesa zaistená skrutkou

Gehäuse aus Stahlblech, verzinkt-chromatisiert, mit zweireihigem Kugelkranz im Gabelkopf


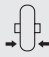









Housing made of pressed steel zinc-chromatised, double ball bearing swivel head

Upevňovacia príruha štvorhranná typ P8
na kolesá série 628, 638

Otočná vidlica typ 628














270

Otočné koleso Lenkrolle Swivel castor									
628 NJ-V260č	260	85		195x160	160x120	14,5	75	310	200
628 NJ-G260č	260	85		195x160	160x120	14,5	75	310	200



271

Otočné koleso Lenkrolle Swivel castor									
638 NJ-V260č	260	85		195x160	160x120	14,5	75	310	200
638 NJ-G260č	260	85		195x160	160x120	14,5	75	310	200

Samostatné kolesá - séria NU

/nosnosť 55 - 100 kg/



Kolesá polyuretánovou obručou /NU/, disk z polypropylénu, guľičkové ložisko /G/

Polypropylen Räder it Polyurethan-Lauffläche, Kugellager /G/

Polypropylene wheel whit polyurethane tread/NU, with ball bearing /G/

Samostatné koleso
Rad
Wheel



NU-g200/8

200

50

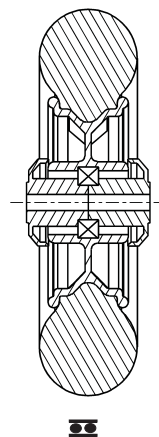


8,5

60

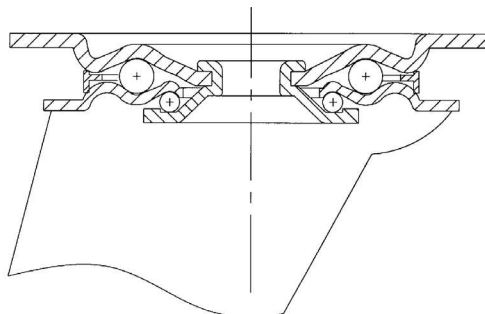
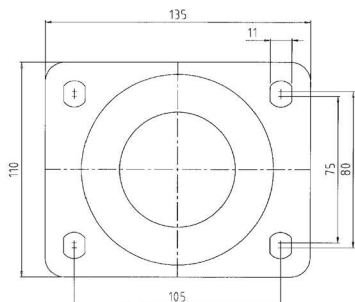
75

Kolesá s guľičkovým ložiskom



Označenie: NU-g...

Transportné kolesá série 623, 633 s kolesami NU /nosnosť 75 kg/



Otočná vidlica z oceleového plechu, pozinkovaná, s dvojitém guľčikovým vekom v smerovej otoči, os kolesa zaistená skrutkou

Gehäuse aus Stahlblech, verzinkt-chromatisiert, mit zweireihigem Kugelkranz im Gabelkopf

Housing made of pressed steel zincchromatised, double ball bearing swivel head

Upevňovacia príruha štvorhranná typ P6
na kolesá série 623, 633

Otočná vidlica typ 623



273

Otočné koleso
Lenkrolle
Swivel castor



623 NU-g200/8	200	50		135x110	105x75	11	61	240	75
---------------	-----	----	--	---------	--------	----	----	-----	----



274

Pevné koleso
Bockrolle
Fixed castor



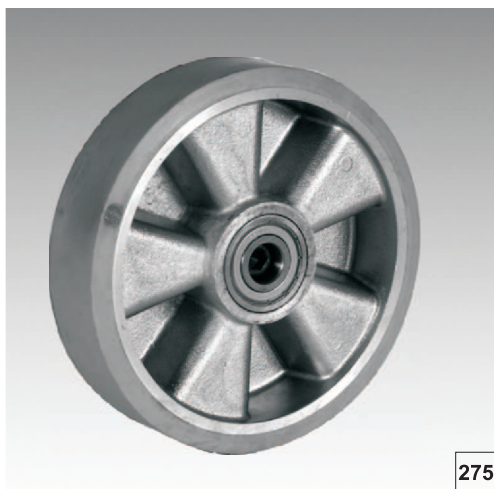
633 NU-g200/8	200	50		135x110	105x75	11	61	240	75
---------------	-----	----	--	---------	--------	----	----	-----	----

IV. ŤAŽKÉ TRANSPORTNÉ KOLESÁ

SCHWER ROLLEN FÜR TRANSPORTGERÄTE, HEVY DUTY SHEET CASTORS

Samostatné kolesá - séria ALU

/nosnosť 350-800 kg/


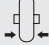


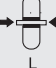
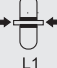




275

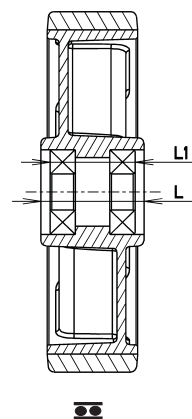
Disk kolesa z hliníkovej liatiny, behúň - polyuretánová obruč /Shore 92+/-/, ložisko guľičkové /G/

Aluminium Räder, mit Polyurethan - lauffläche, mit Kugellager /G/

Light aluminium centre wheels, with polyurethan tread with ball bearing /G/

Samostatné koleso Rad Wheel							
					L	L1	kg
ALU-G125/20	125	50		20	57	50	350
ALU-G160/20	160	50		20	57	50	600
ALU-6200/20	200	50		20/25/	57	50	800

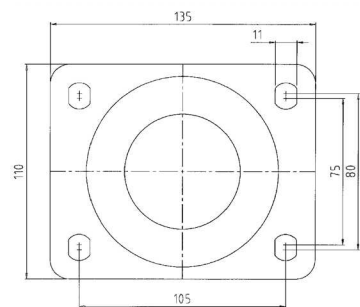
Kolesá s guľičkovým ložiskom



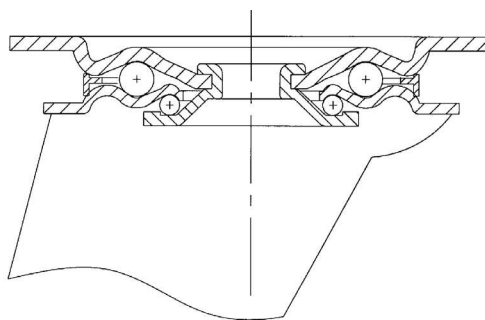
Označenie: ALU-G...

Transportné kolesá série 623, 623T, 633, 624, 624T, 634, 824, 824T, 834, 825, 825F, 835 s kolesami ALU

/nosnosť 300-800 kg/



Upevňovacia príruha štvorhranná typ P6 na kolesá série 623, 633, 624, 634

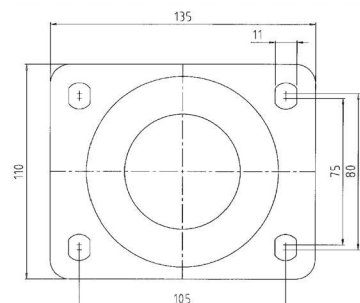


Otočná vidlica typ 623, 624

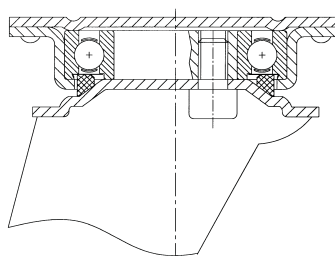
Otočná vidlica z ocelového plechu, pozinkovaná, s dvojitým guľičkovým vencom v smerovej otoči, os kolesa zaistená skrutkou

Gehäuse aus Stahlblech, verzinkt-chromatisiert, mit zweireihigem Kugelkranz im Gabelkopf

Housing made of pressed steel zinchromatised, double ball bearing swivel head



Upevňovacia príruha štvorhranná typ P6 na kolesá série 623, 633, 624, 634



Otočná vidlica typ 623, 624

Otočná vidlica z ocelového plechu, pozinkovaná, s dvojitým guľičkovým vencom v smerovej otoči, os kolesa zaistená skrutkou

Gehäuse aus Stahlblech, verzinkt-chromatisiert, mit zweireihigem Kugelkranz im Gabelkopf

Housing made of pressed steel zinchromatised, double ball bearing swivel head



Otočné koleso
Lenkrolle
Swivel castor



623 ALU-G125	125	50		135x110	105x75	11	53	165	300
624 ALU-G160	160	50		135x110	105x75	11	49	200	400
824 ALU-G160	160	50		135x110	105x75	11	52	200	600
624-ALU-G200	200	50		135x110	105x75	11	55	240	400
824 ALU-G200	200	50		135x110	105x75	11	61	245	600
825 ALU-G200	200	50		135x110	105x75	11	61	245	800















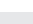


Otočné koleso
Lenkrolle
Swivel castor



633 ALU-G125	125	50		135x110	105x75	11	53	165	300
634 ALU-G160	160	50		135x110	105x75	11	49	200	400
834 ALU-G160	160	50		135x110	105x75	11	52	200	600
634-ALU-G200	200	50		135x110	105x75	11	55	240	400
834 ALU-G200	200	50		135x110	105x75	11	61	245	600
835 ALU-G200	200	50		135x110	105x75	11	61	245	800


278

Otočné koleso s total brzdou Total-feststeller Total lock									
									kg
623T ALU-G125	125	50		135x110	105x75	11	53	165	300
624T ALU-G160	160	50		135x110	105X75	11	49	200	400
824T ALU-G160	160	50		135x110	105X75	11	52	200	600
624T-ALU-G200	200	50		135x110	105X75	11	55	240	400
824T ALU-G200	200	50		135x110	105X75	11	61	245	600
825T ALU-G200	200	50		135x110	105X75	11	61	245	800