

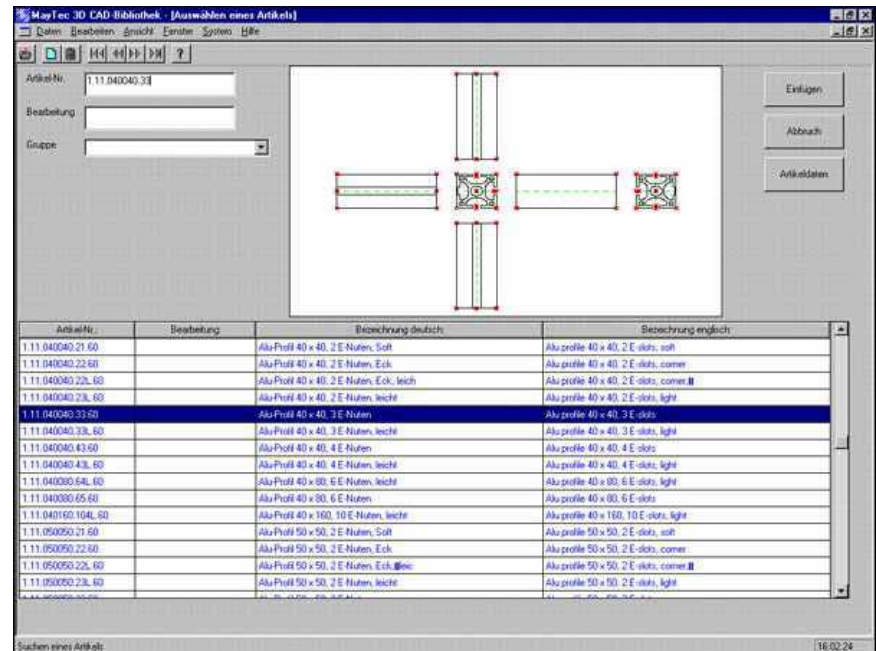
CAD Libraries

## MayTec 2D-Library

The MayTec 2D library has been developed to support AutoCAD with DWG drawings and other CAD software through the use of DXF files.

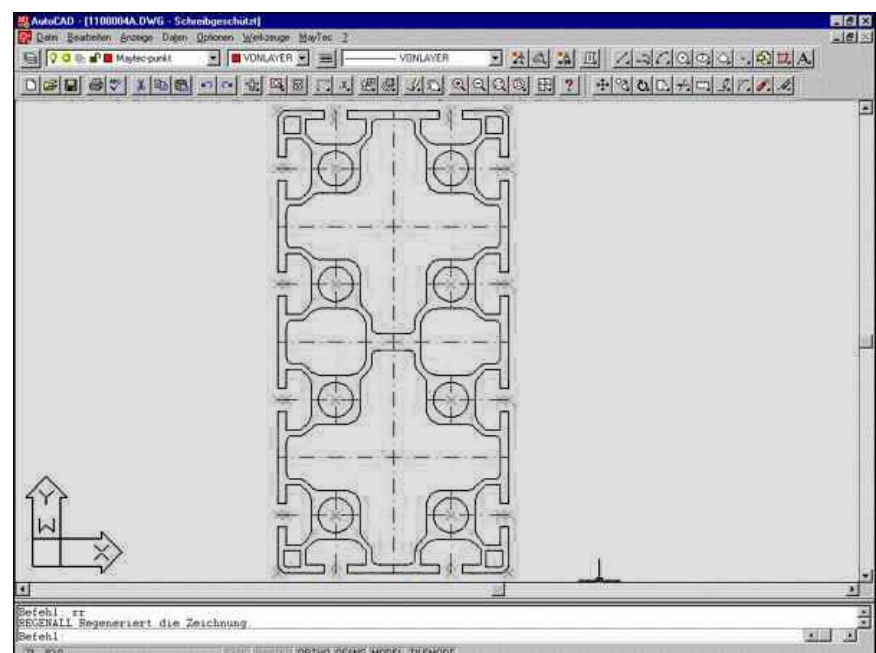
### System Requirements

- MS Windows
- CD-ROM Drive
- AutoCAD 2000 or higher
- Any CAD System supporting DXF import



### Description

- Suitable for AutoCAD or other CAD software with DXF import function.
- Includes browser with preview function allowing simple selection of parts to be inserted.
- Covers all products listed in the MayTec Profile Catalogue including part numbers (Approx. 14,000 drawings).
- Choose between detailed drawings or schematic outlines for parts to be inserted.
- Software can be run from a single workstation or over a network directly from a hard drive or from the CD-ROM.
- Various reference points can be selected for the insertion of each component.
- Parts are inserted directly into AutoCAD as a block or as a DXF element into any other CAD system.



## MayTec Online Library

The online library is available on the MayTec Web Site at [www.maytec.de](http://www.maytec.de) in English and German.

Any number of parts can be selected while online and requested as either 2D drawings or 3D models. Once the parts have been chosen, the drawings will be supplied in the original file format of the selected CAD software or in any standard interface format. The requested files are supplied to the user as an email attachment.

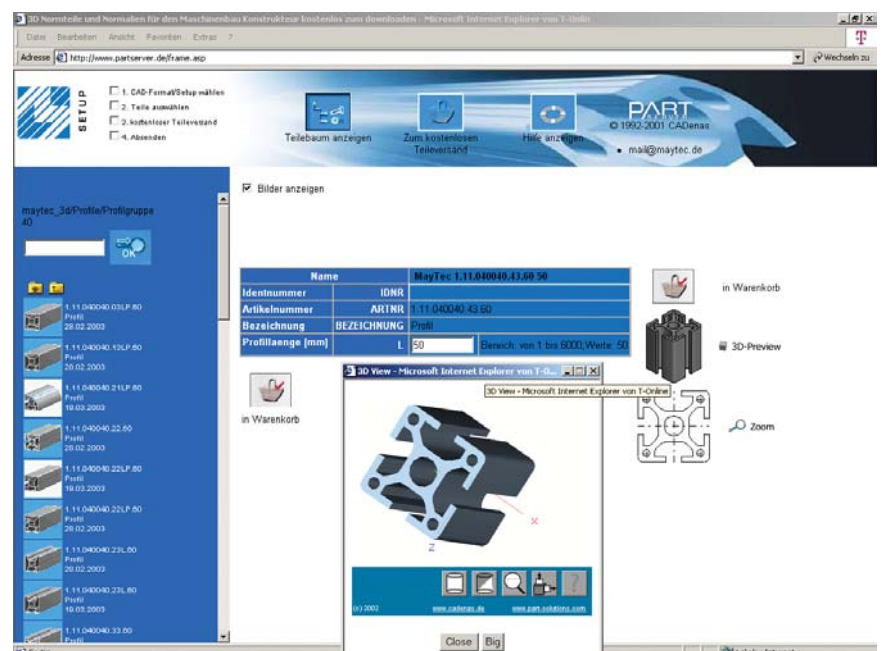
## System Requirements

- Internet access
- Email account



## Description

- Suitable for all 2D and 3D CAD software.
- Provides 2D drawings and 3D models in original file format for all common CAD software.
- 3D preview allows the simple selection of required parts.
- Profile drawings can be provided in any length.
- Includes all products in the MayTec Profile Catalogue.
- No limit on the number of selected parts to be provided during any session.
- All 2D drawings and 3D models are supplied as email attachments.



## MayTec 3D-Library with "B&W Profiles"

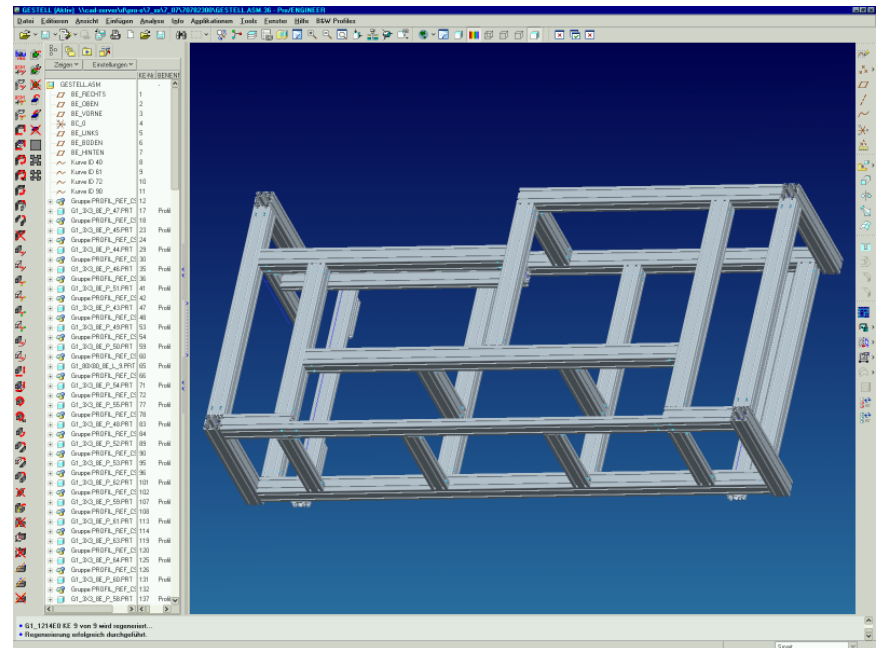
### System Requirements

- PRO/Engineer 2001 or Wildfire
- B&W Profiles advanced

The MayTec 3D library has been designed for use in conjunction with PRO/Engineer and B&W Profiles software.

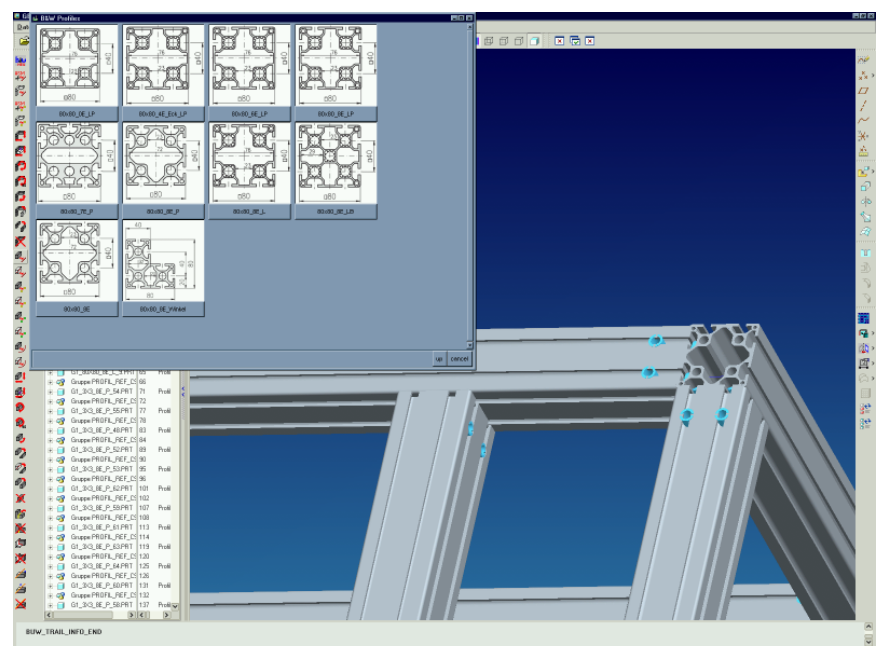
B&W Profiles, provides the operator with a user friendly interface for the simulated assembly of profiles, connectors and accessories. The software is also designed to support the joining of these profiles and the implementation of the MayTec Connector System. The design of frames and building elements using the MayTec Profile System with the B&W software is thereby greatly simplified and becomes much more cost-effective.

Another important feature of the software is the automatic generation of complete parts lists with machining codes and MayTec part numbers. The parts list can be exported automatically into the MayTec calculation software if required.



### Description

- 3D software for PRO/Engineer in conjunction with B&W Profiles.
- Simple assembly of profiles on 3D sketch lines, body contours or between points.
- Rational definition of profile nodes (corners, T-joints, parallel joins, etc.) including connector drilling holes.
- Rotating, moving and swapping of profiles can be done at any time without the need to regenerate the drawings.
- Automatic generation of parts lists with MayTec article numbers and machining codes.
- Automatic export of all parts lists to the MayTec calculation software.
- Includes all products in the MayTec Profile Catalogue.



### Germany

**MayTec Aluminium**  
Systemtechnik GmbH  
Kopernikusstraße 20  
D - 85221 Dachau

country code: +49  
phone (0) 8131 / 33 36 - 0  
fax (0) 8131 / 33 36 - 119  
e-mail: mail@maytec.de  
http://www.maytec.de